



RZU Planungsdachverband
Region Zürich und Umgebung

Region Zürich und Umgebung Planungsdachverband (i.e. Zurich Region and its Surroundings)

Institution / Task / Fields of Activity / Working principles

Angelus Eisinger

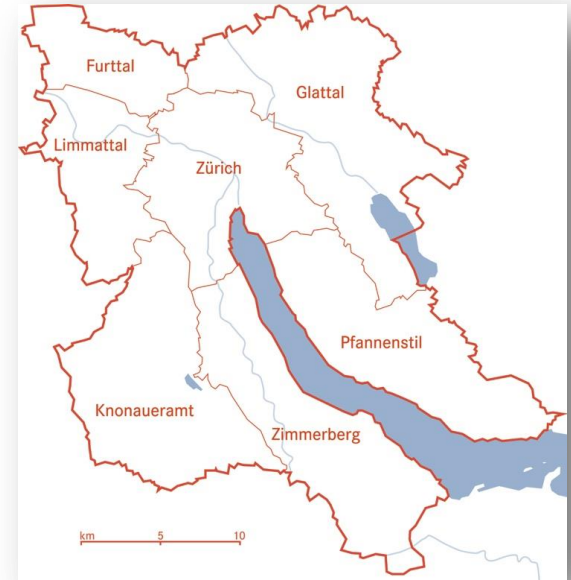
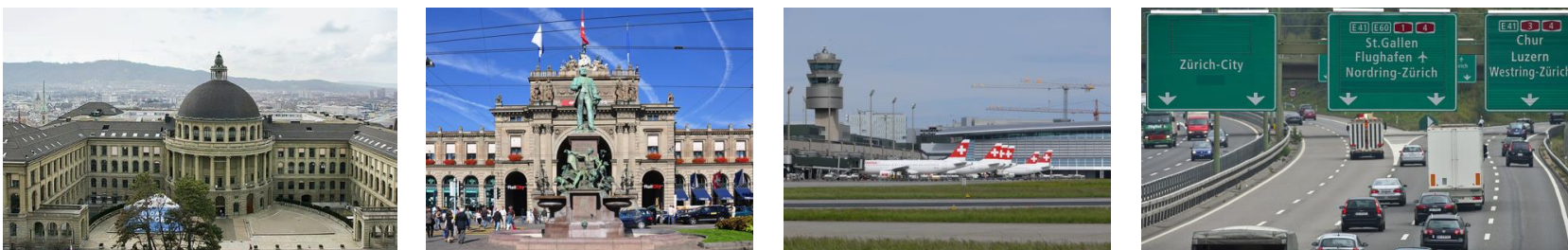
Director

Dr. habil. / angelus.eisinger@rzu.ch / www.rzu.ch



A first zoom-in into the functional region of Zurich

The RZU-area: Constant transgressions from rural to urban

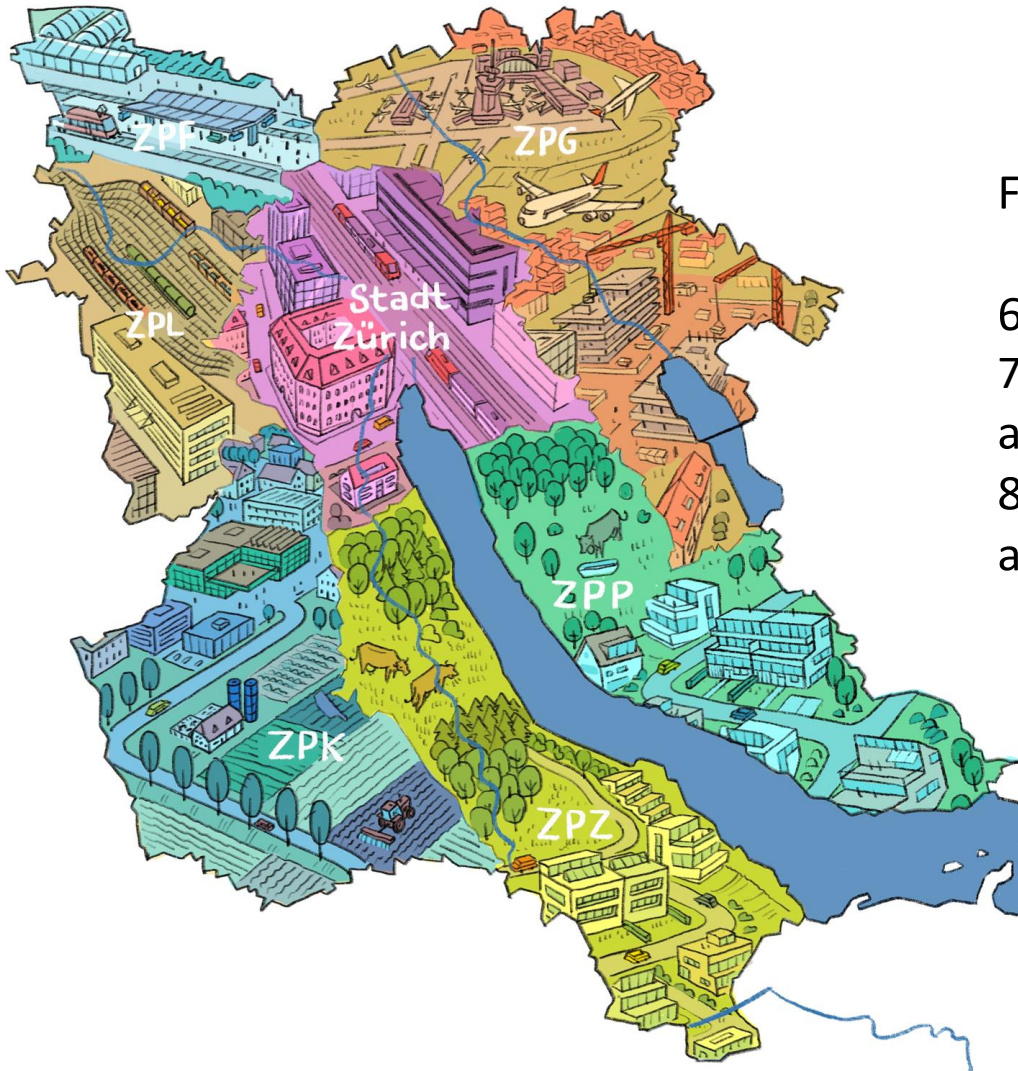


Starting points 1: The institution

Who we are: The functional reading – The core of the metropolitan area



4



Facts and figures:

697 km² (approx. 1.7% of CH)

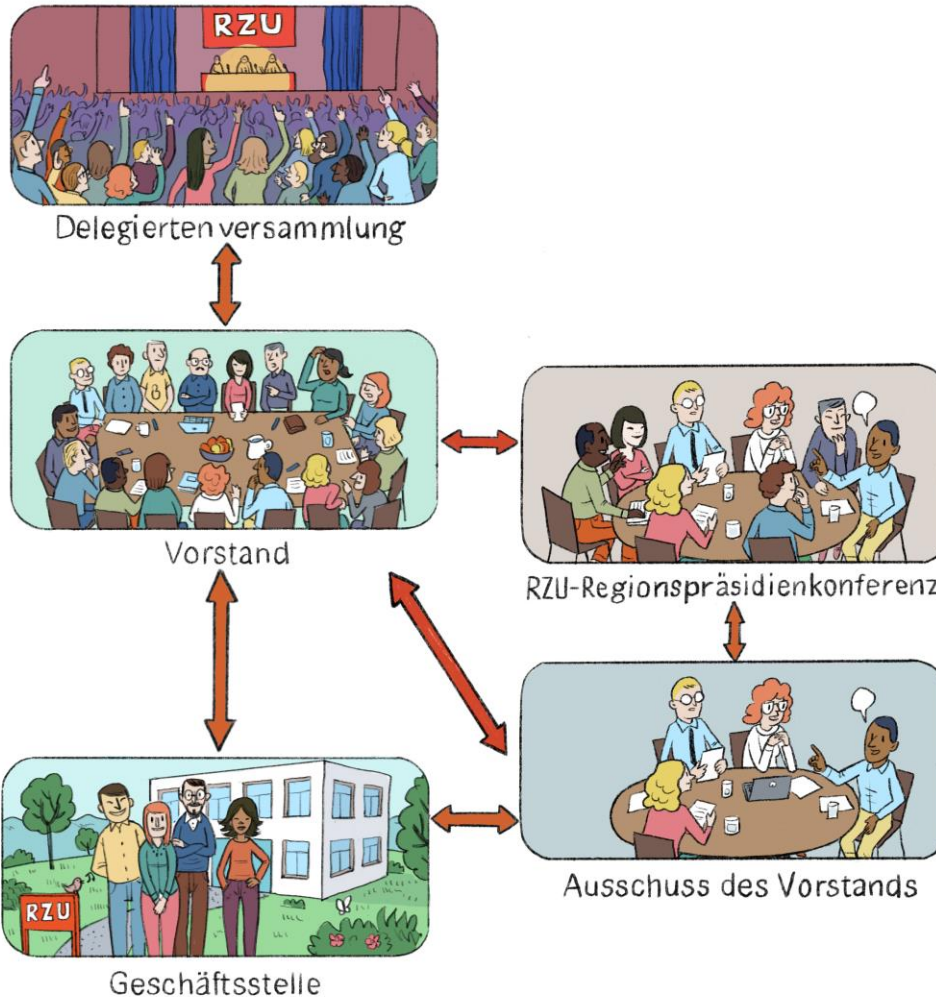
71 cities and villages

approx. 1 Million inhabitants and
800000 employees

approx. 17% of the national GDP

Starting points 1: The institution

Who we are: The institutional reading



Specificities:

- High-level representation of City and Kanton in the executive board together with 6 further planning regions
- Hybrid constitution of the executive board (political / technical)
- Thematically focused exchanges at eye level
- Cross-level governance / debates
- Closed rooms for developing strategic issues

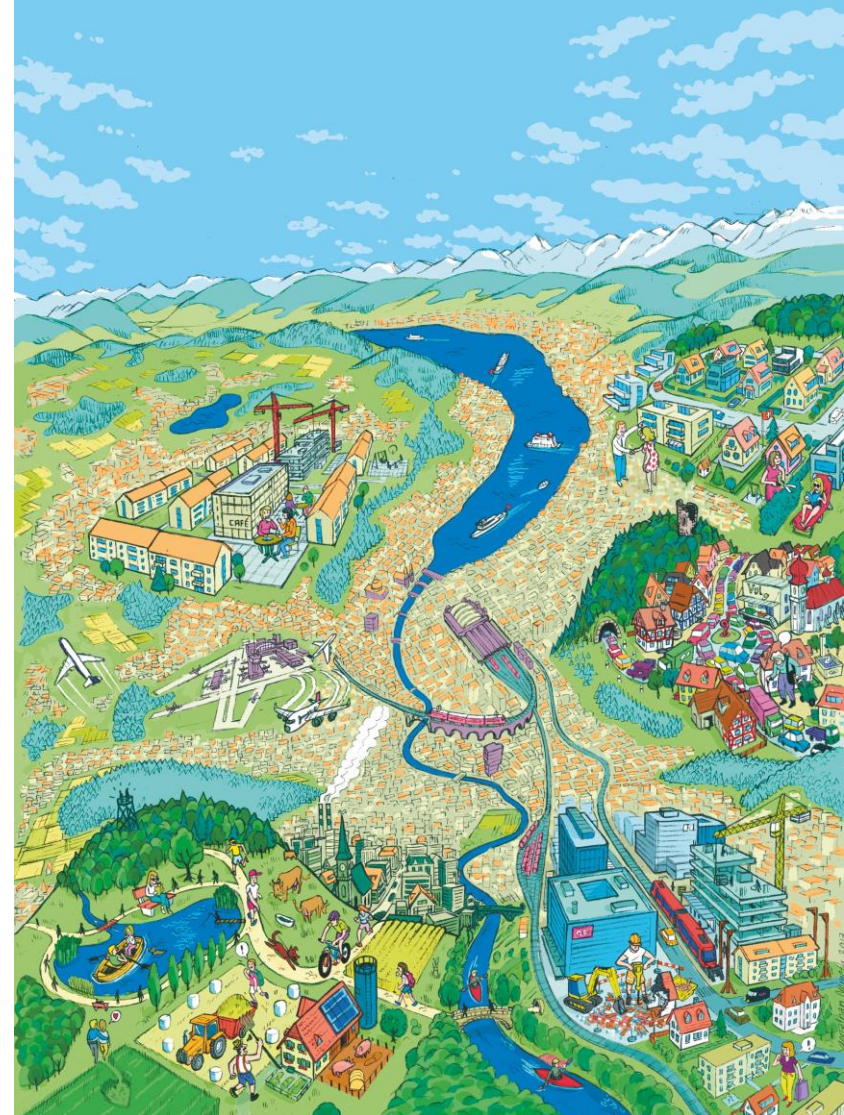
Starting points 2:

The challenges of strategic planning in functional regions



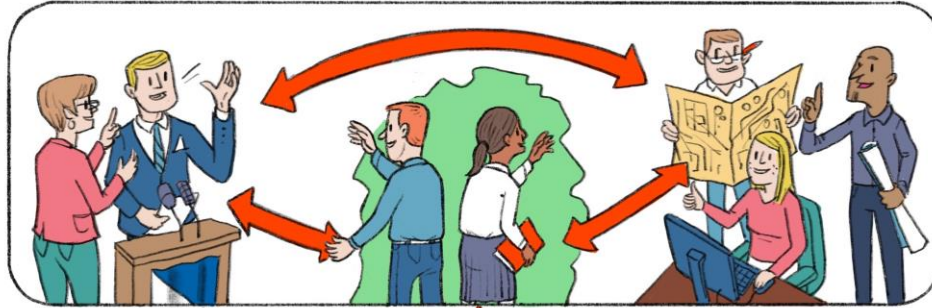
6

- 1 The polycentric urban region is the contemporary effigy of the city.
- 2 It is the unintended spatial outcome of the drastic sociotechnical change since the 1950s.
- 3 The polycentric urban region is situated in the blind angle of planning.
- 4 Polycentric urban regions may not adequately be described by simplified readings or abstract models.
- 5 Conventional approaches and procedures in planning are no longer able to encompass and overcome the factual challenges.



What is our task?

The three fields of activity and their respective working principles



Exchanging and linking

Transfer of knowledge and experience between politics and planning across the various levels of state action



Initiating and representing

Creation and representation of members' positions toward external institutions

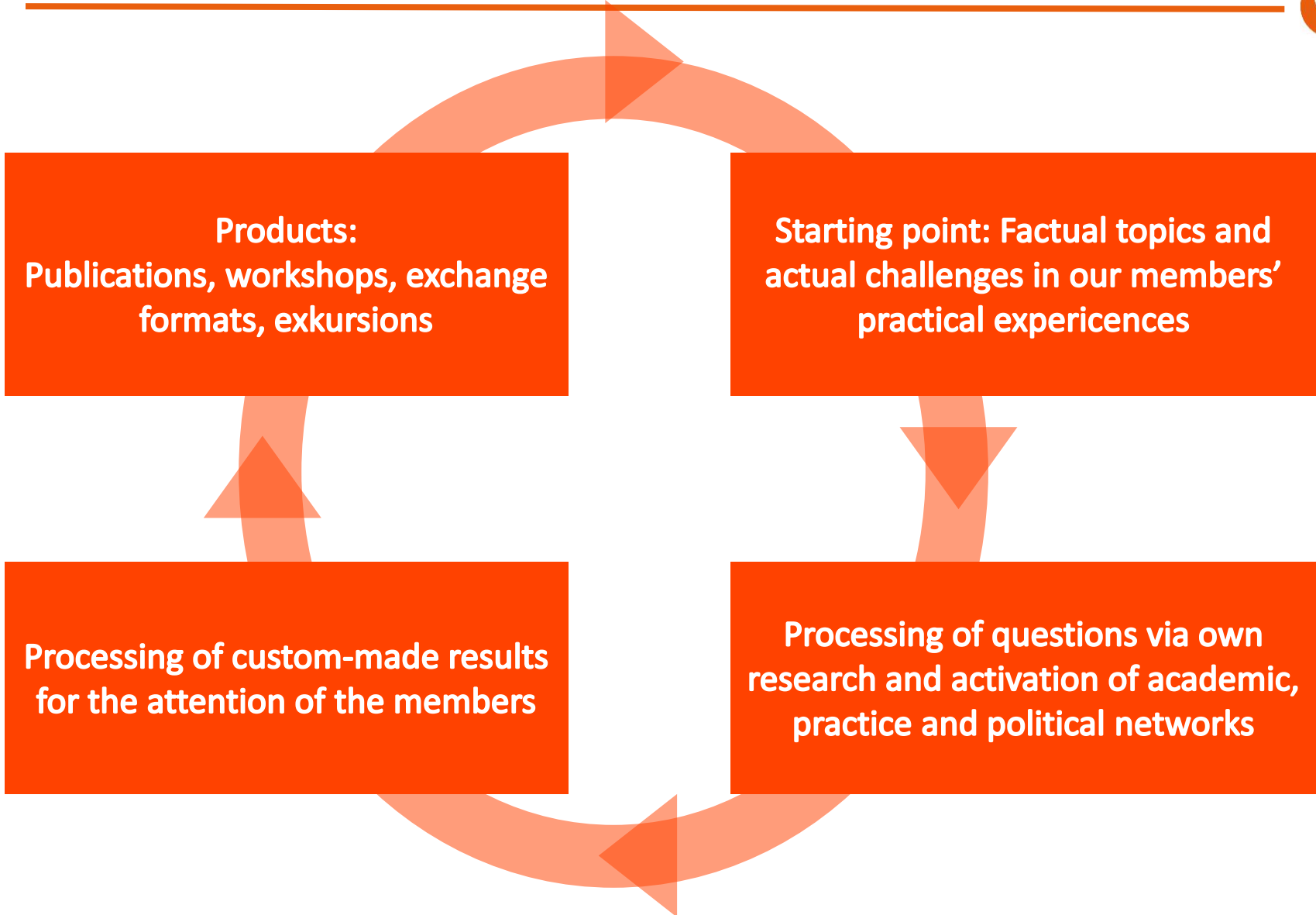


Thinking ahead and informing

Analysis of trends, creation of novel ideas, thought-provoking impulses, knowledge broker for the members

What is our task?

The working principle – From the field of practice to the field of practice



What is our task?

Current issues and topics:



The fundament of all activities of the organisation and its office lie in the annual program and a perennial frame of strategic topics.

Excerpt of the current program

- Climate adaptations strategies
- Autonomous driving in functional spaces
- Sustainable densification strategies in the existing building stock
- Non-settlement area as neglected strategic field
- Active land-policy - good practices
- Regional housing policy – challenges and strategic options