

GRAND LYON
la métropole



Agence d'**Urbanisme** de l'aire
métropolitaine **lyonnaise**

GRAND LYON LA MÉTROPOLE SAINT-ÉTIENNE MÉTROPOLE

Pôle métropolitain

VIENNAGGLO CAPI PORTE DE L'ISÈRE

Lyon

22 & 23 October

Welcome to the Oslo's region delegation

TODAY

The Lyon metropolitan area urban planning agency

1

Statut, governance et activities, a structure facilitating mutual acquaintance

Karen Mc Cormick, in charge of territorial strategy studies and referent of European and international networks on governance issues

Métropole de Lyon's governance

2

The PLUI-H, the strategic planning and regulatory planning document

Grégoire Carrier, Director of Territorial Strategies and Urban Policies of the Metropolis of Lyon

The metropolitan area of Lyon: dynamics, challenges and actors of planning

3

InterScot, the harmonized strategic planning approach for the Lyon-Saint Etienne metropolitan area

Sébastien Rolland, coordinator of the interScot approach and part-stakeholder of the prospective unit at the Planning Agency.

TOMORROW

Town tour in the city of Givors

The Metropolitan Pôle : historic, governance et activities

Philippe Tormento, Director General

Free time in Lyon

Arrival at Lyon-Perrache station and free lunch time in the Confluence district



URBALYON : Lyon Urban Agency





1- Lyon Town planning Agency

2- Networks of Urban Town planning Agencies

3- A range of activities and multi scales approach



Lyon Urban Agency : A tool of engineering in the public interest whose activities contribute to plan and develop Lyon metropole area.

A partnership based on
40 public partners :

Main partners :

- Metropole of Lyon (local authority)
- The State
- Lyon City Council, Villeurbanne City council, Venissieux City Council
- The Authority of Transport : SYTRAL
- Lyon Economic chamber (public company in charge to bring together economic actors, which contributes to the territory development)
- Other Town Communities at the periphery and local authorities : gathering of town city councils and municipalities
- Social housing Actors ...





Urbalyon is an association with non benefit objectives



2 per year a membership meeting : to inform all partners

4 per year an Executive board : 24 elected people to decide our partnership programme of activities

4 per year a narrow executive board : 7 elected people to prepare decisions

Evry 3 months : a technical metting to inform on progress of missions



Lyon Urban Agency : Budget

7 000 000 € = 710 000€ of subscriptions + 6 290 000 € subsidy for studies



The common core of knowledge

The shared missions

Partners pay a fee to join the association and after each of them decide what they expect from the agency and pay for it as a contribution of the proper functioning of the association.

Partners have to deal common interest to commission studies or meetings facilitator.



Lyon Urban Agency

A team with a diversity of skills - 10 departments

✓ **Urban planners, Urban designers and landscapers working on « Territories and Projects »**

✓ Administration, Financial service, Computing Department
Knowledge & Information

✓ Statistics / Data

✓ Cartography - Mapmaking / Geographic information system

✓ **Experts**

Economy, society and solidarity

Environment and sustainability

Housing and mobility

85 workers team offering varied skills





1- Lyon Town planning Agency

2- Networks of Urban Town planning Agencies

3- A range of activities and multi scales approach





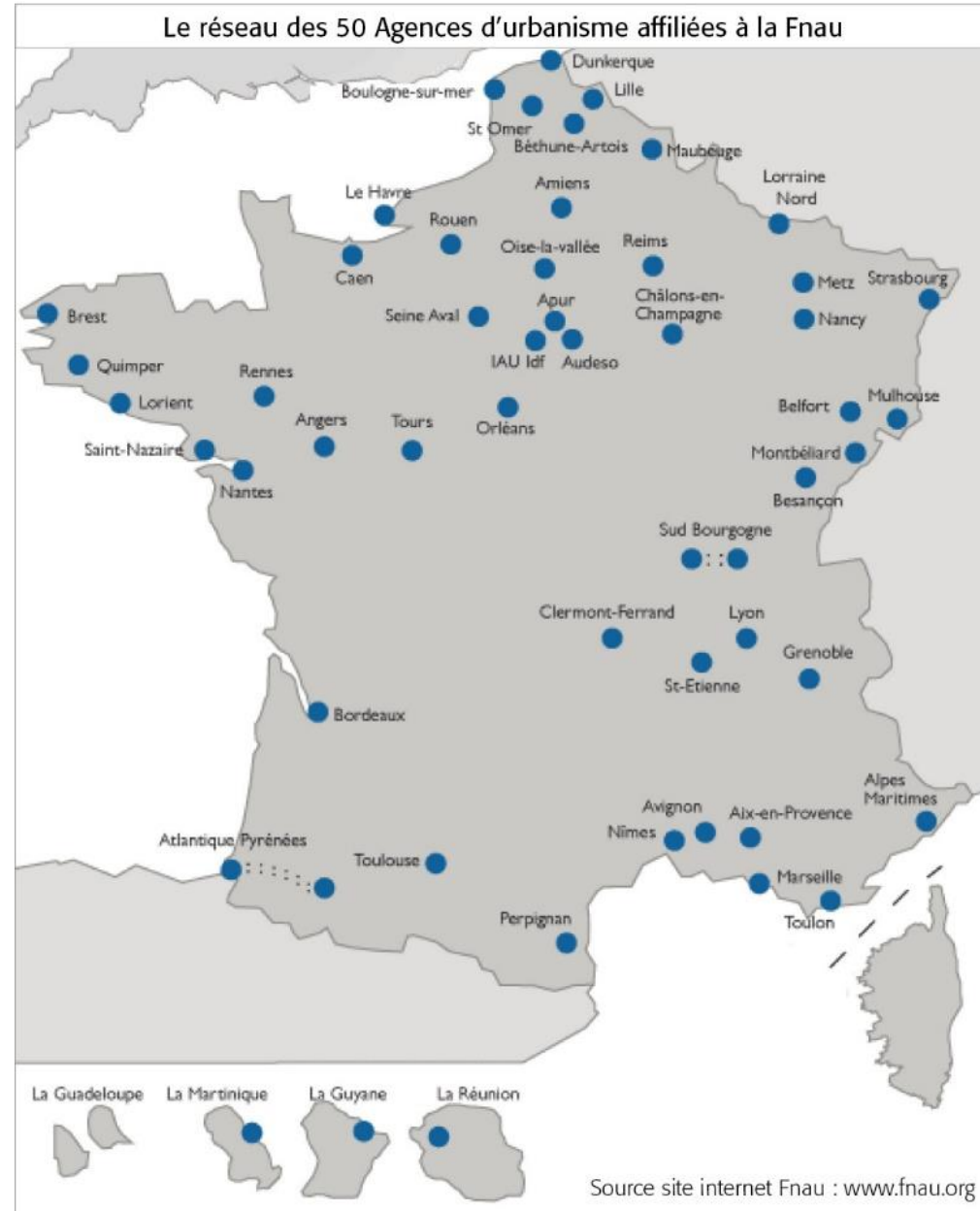
Networks of Urban Town planning Agencies

50 French Town Planning Agencies
1600 professionals

Réseaux d'agences d'urbanisme
dans les nouvelles régions en 2017



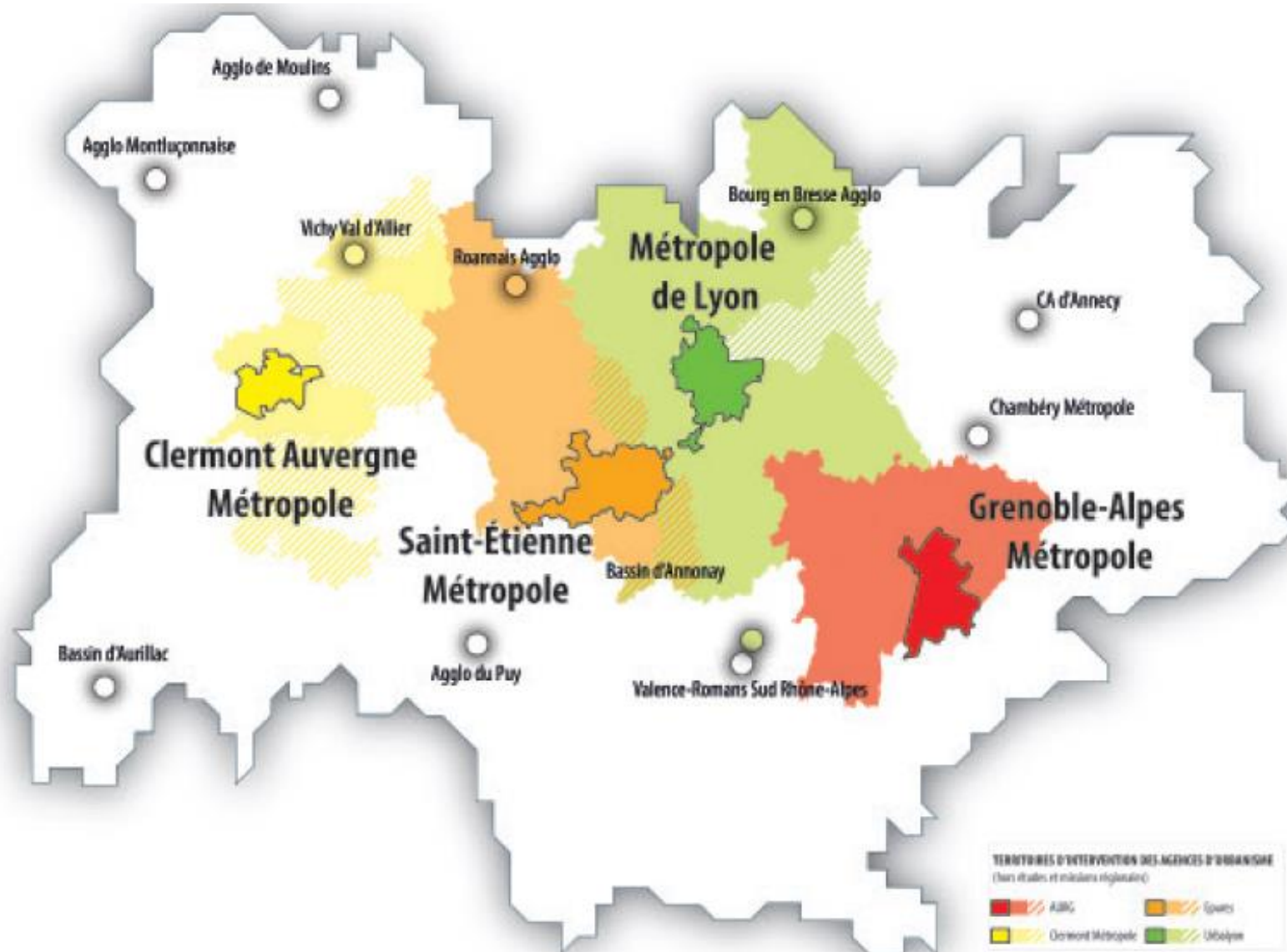
Le réseau des 50 Agences d'urbanisme affiliées à la Fnau





Lyon, Grenoble, Saint-Etienne and Clermont-Ferrand

4 Town Planning Agencies in Auvergne-Rhône-Alpes





1- Lyon Town planning Agency

2- Networks of Urban Town planning Agencies

3- A multi scales approach & a range of activities





Main activities : Observation

Knowledge of the city and country side evolutions : observation and foresight studies on social, economic and territorial phenomenon...

The observation is a complex and long process based on data, knowledge and analysis.

It is a principal tool for decision, elaboration, assessment of Public policies.





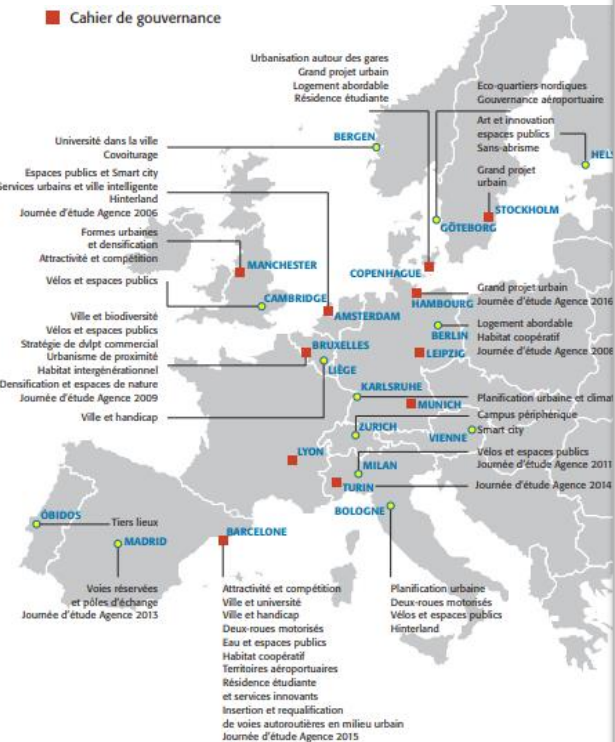
Communication and Knowledge sharing -

Innovation

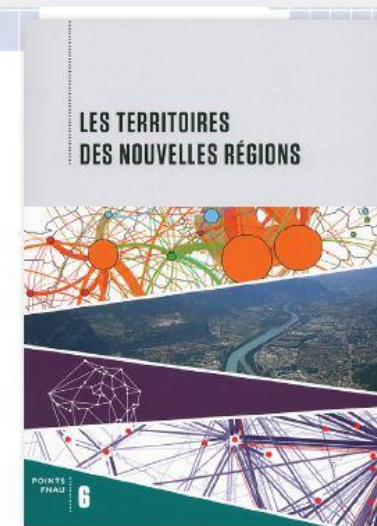
Professional meetings, network, TV Web, publications...

Exchange with other European cities, study visits, exploration of emerging issues

Opportunities for dialogue



Publications





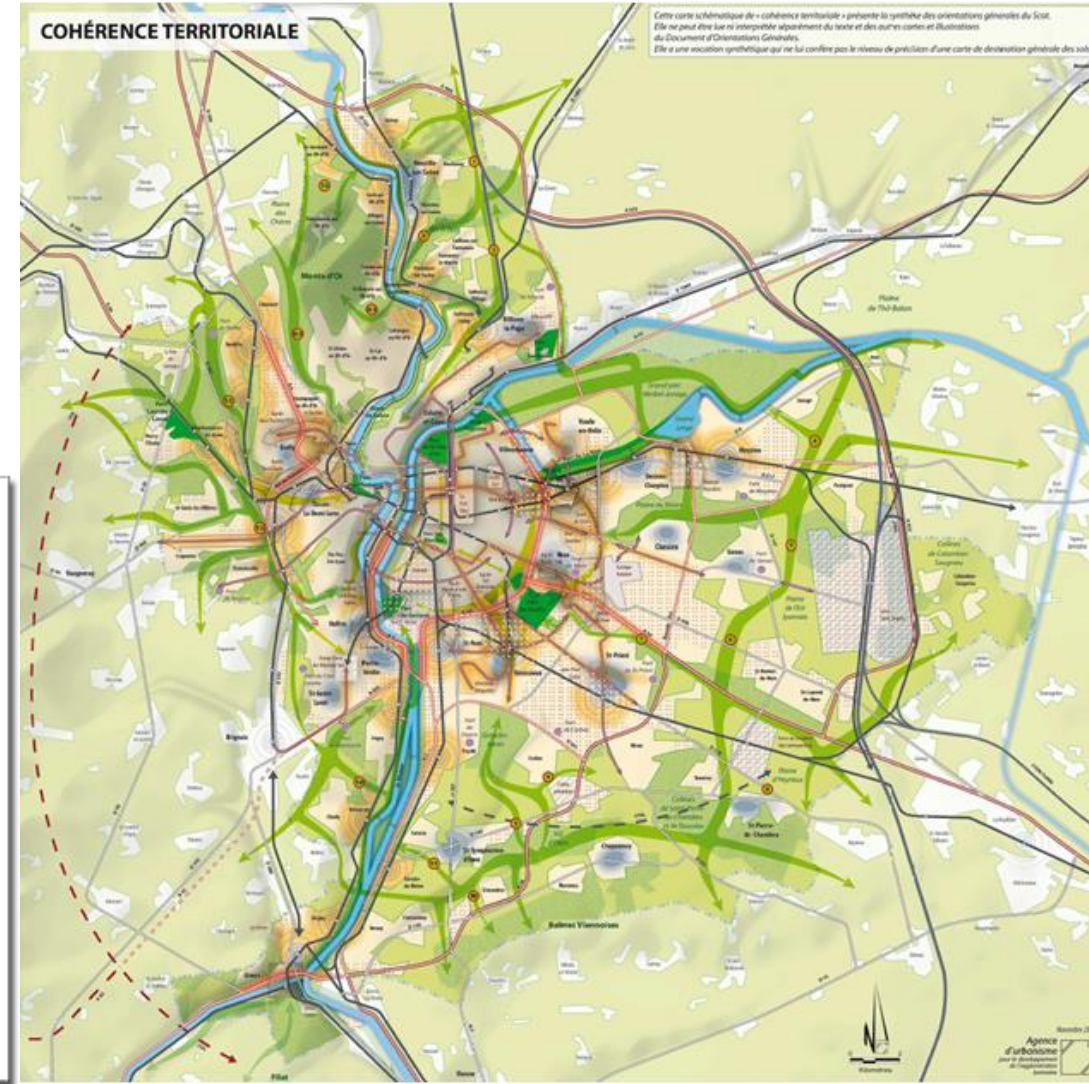
Land use planning & Housing - Mobility Plan

Goal : delineate the major spatial development priorities in the long term (2030)

Land use plan for Metropole of LYON (PLU-H), based on scheme for each the 59th municipalities of the Metropole of Lyon

Sustainable urban mobility Plan (PDU)

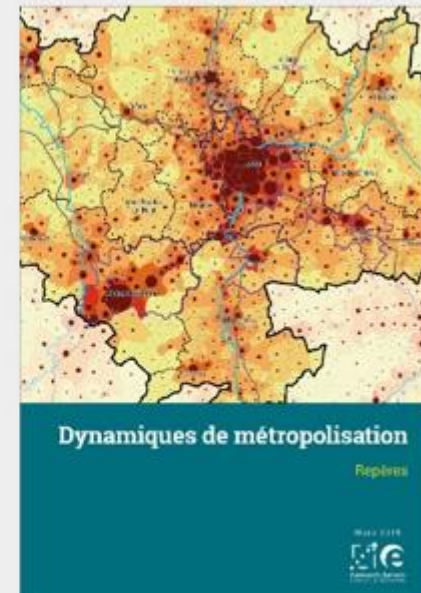
They must be compatible with the guidelines as defined by the territorial coherence scheme (SCOT)





Metropolitan strategy Planning

Master plan of the Metropole of Lyon plus 17 surrounding cities (SCOT Agglomeration lyonnaise)
Coordination of various regional master plans, Publications



Métropole et métropolisation : deux publications du pack de connaissances

Les indicateurs de suivi de l'inter-Scot



Current topics - Innovation & Inspiration

Health and climate issues
The benefits of nature
Inhabitants' expectations

New stakes for designing public Space

Temporary planning

New practices

Feed & supply



RESUME DE L'ETUDE juin 2018

Un argumentaire pour les toits verts
“ Quand l'urbanisme regarde vers le haut ,”

décembre 2018



**Une canopée
pour la Métropole de Lyon ?**

Enseignements d'un benchmark international

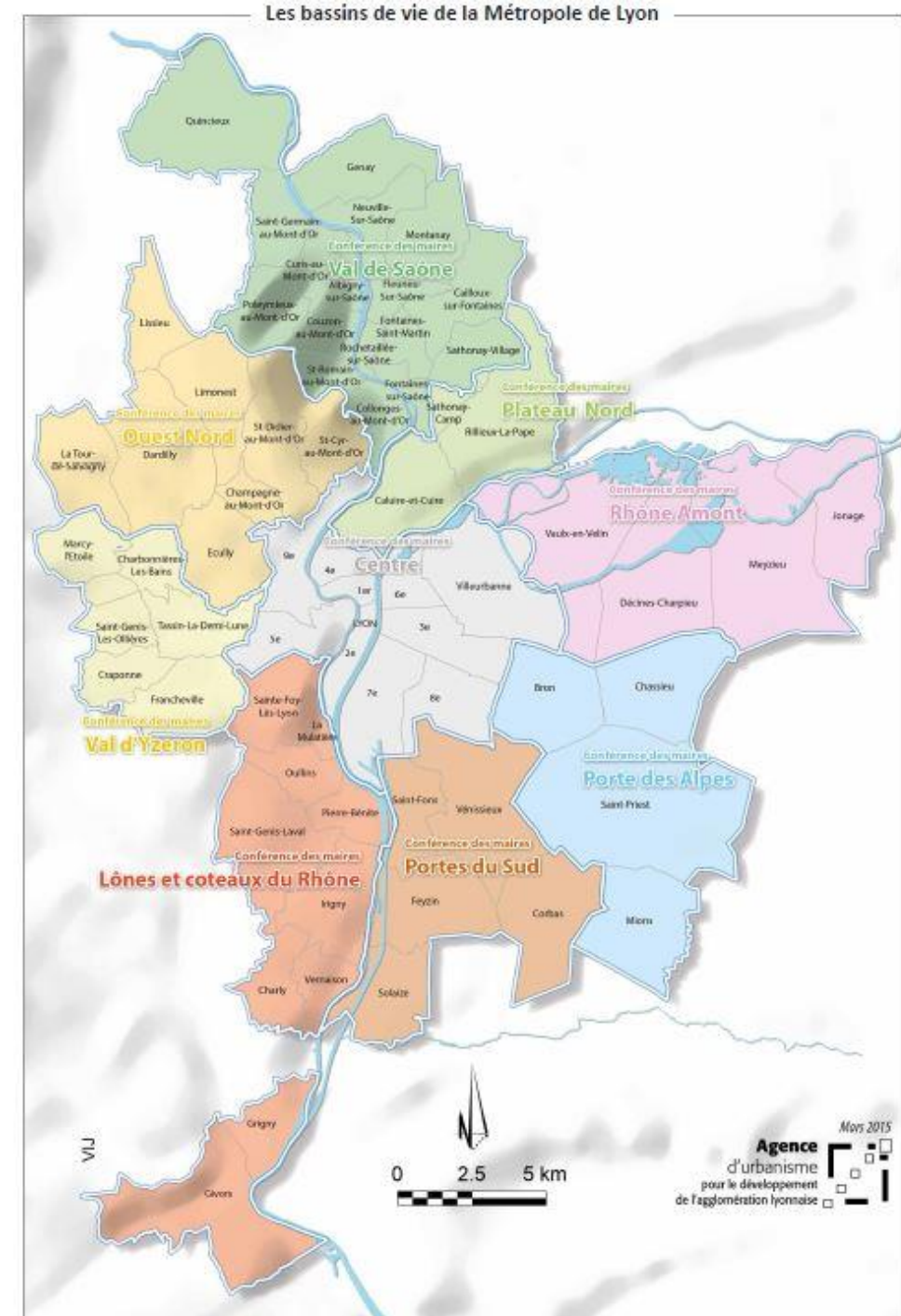
Tree Charter & Canopy Plan



Local authority composed of 59 municipalities

Responsible for :

- Town planning and housing
- Basic public services (water, sanitation, waste management, streets...)
- Support for the economic development
- Social care (a new competency since 2015)



Lyon metropolitan area

3.2 millions people

1 000 municipalities

Intercommunal/
Inter-municipal Cooperation

Scot : Territorial Coherence Plan
(=Strategic Plans)



Auvergne Rhône-Alpes Region

7.9 millions inhabitants

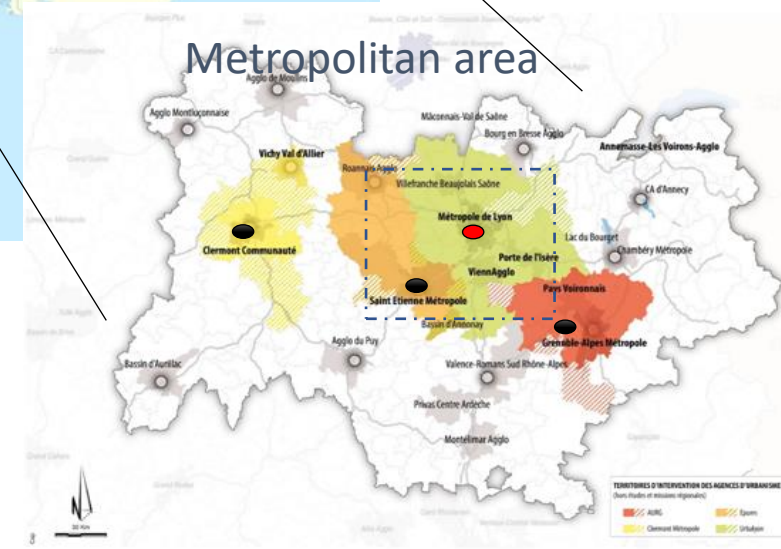
GDP : 241 billions euros

Auvergne-Rhône-Alpes
the second french Region

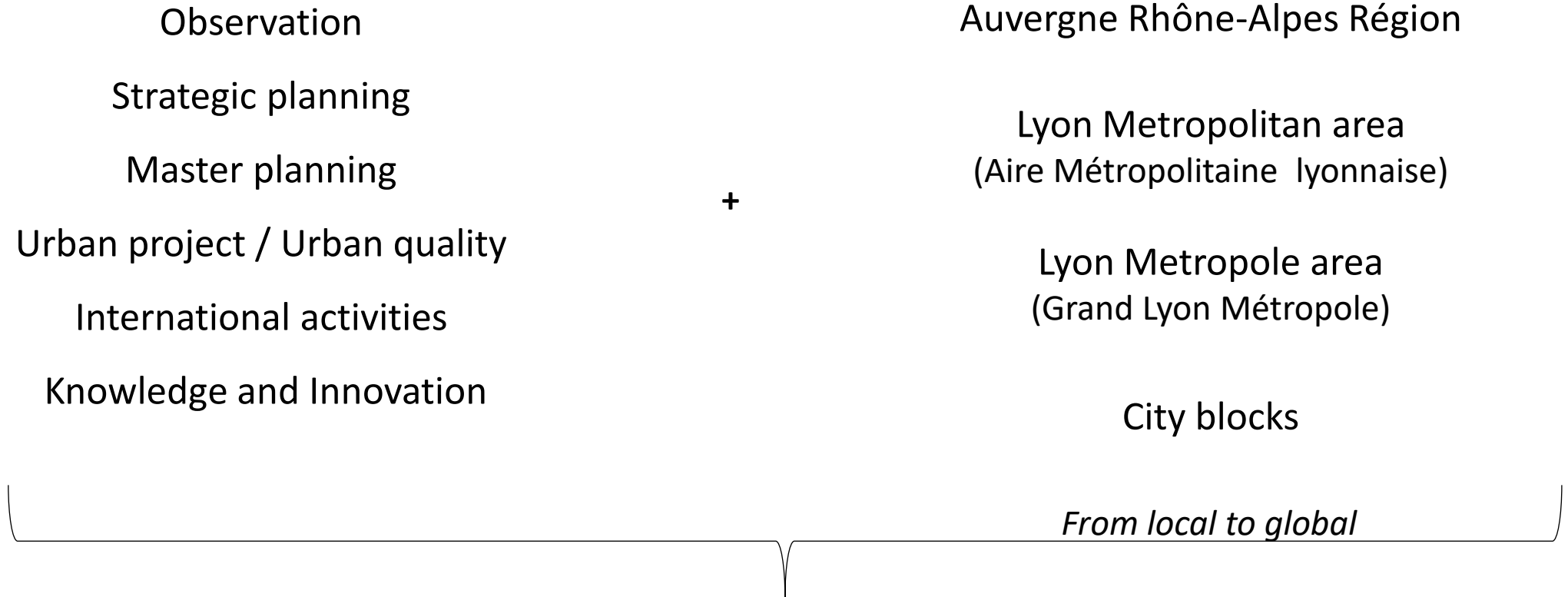
350 000 students

8 universities

An administrative region that we observe and
study through our local network



4 Town Planning Agencies in
Auvergne-Rhône-Alpes :
Lyon, Grenoble, Saint-Etienne and
Clermont-Ferrand



Help decision making
Plan, Developp, Animate, Anticipate,
Advice,...



To know more about Urbalyon activities : <https://www.urbalyon.org/>

To search for information and resources : <http://documentation.urbalyon.org/>



GRAND LYON

la métropole



 **+ 1.3 MILLION** INHABITANTS | **+ 5%** IN 5 YEARS

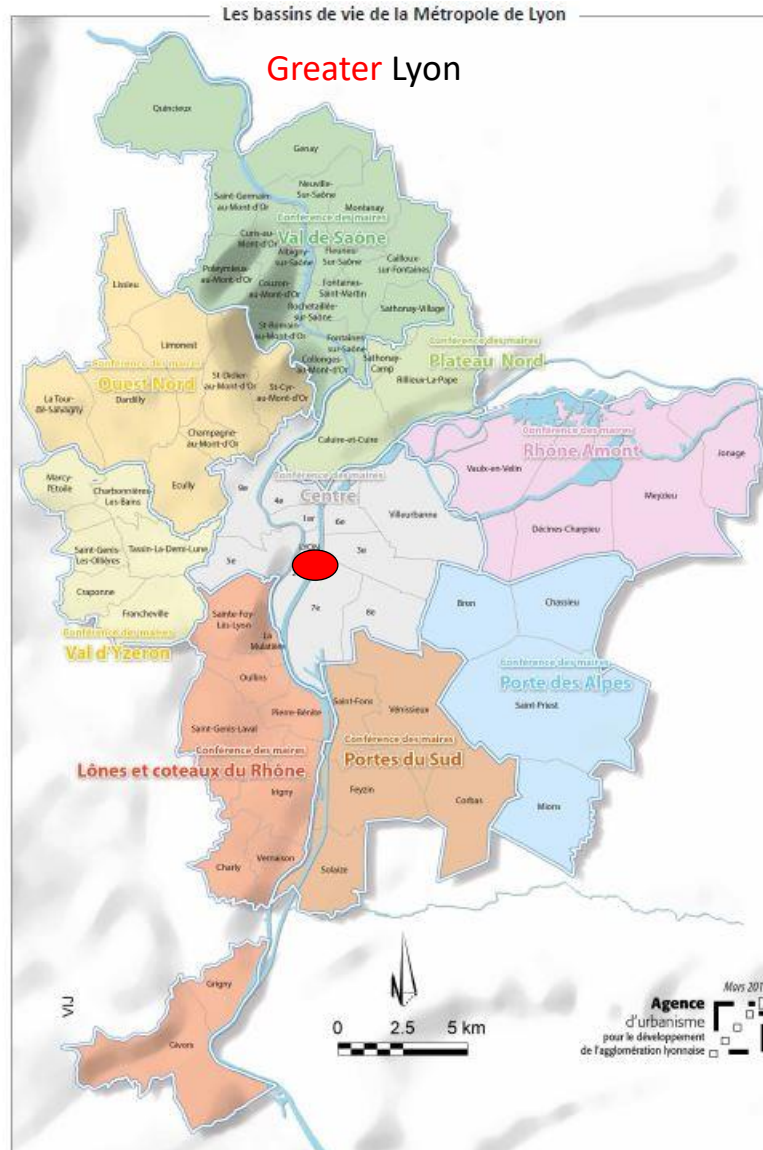
 I.E. **17%** OF THE POPULATION OF THE AUVERGNE – RHÔNE-ALPES REGION
Source: INSEE 2014

 **9,200 EMPLOYEES** (31/12/2016)

Greater Lyon

GRAND LYON

la métropole



BUDGET 2017
€ 3.19 B

A GDP OF
€ 74.6 B

Source: Lyon, Financial and Service Sector Location 2015

€ 3.5 B CAPITAL
EXPENDITURE 2015 - 2020

€ 11 B
TRANSFERS OF REVENUE
TO THE TERRITORIES

Source: Davezies 2016

€ 657 M
STRATEGIC PROJECT FUNDING
IN THE CPER-CFAC (Planning
agreement between the national
and regional governments)

Lyon Metropole area – Grand Lyon Métropole

1,3 million of inhabitants
59 municipalities

Land Use and Housing Plan (PLU-H)

Land Use Rights

Future housing policy

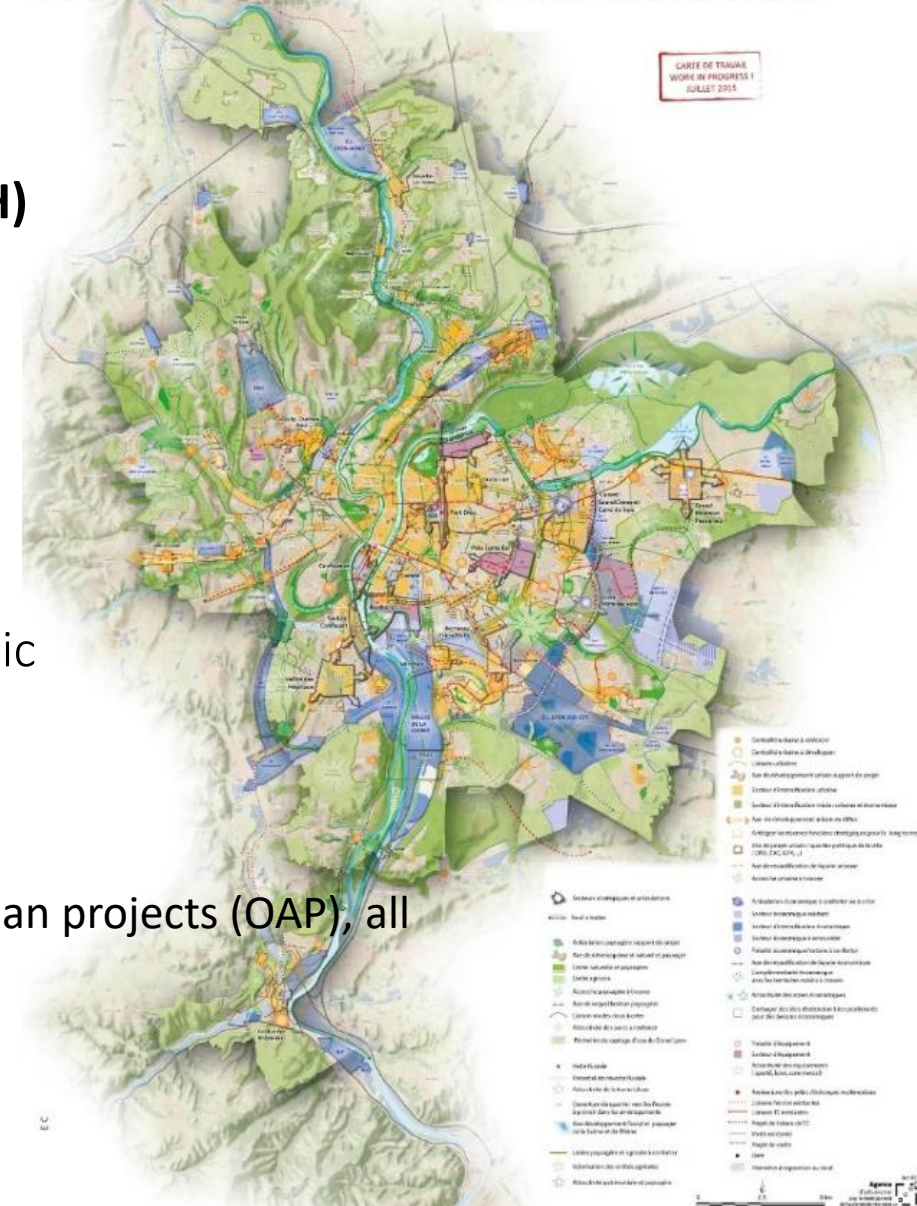
Must be compatible with the
guidelines
as defined by the Territorial Strategic
Plan (SCOT)

City project (PADD), Zoning Plans, Urban projects (OAP), all
these documents online :

<http://pluh.grandlyon.com/>

révision du PLU-H* de la Métropole de Lyon

projet d'Aménagement et de Développement Durable, premiers contours de projet



Sustainable Urban Mobility Plan (SUMP)

An enlarged territory of 73 municipalities

A sustainable urban mobility Plan

Mobility policy's principles
Recommandation of actions

Must be compatible with the guidelines
as defined by the Territorial Strategic Plan
(SCOT)

WE operate the Sustainable urban mobility
Plan for the Authority of Transport called
SYTRAL



Urban Project / Urban Quality / Public Spaces

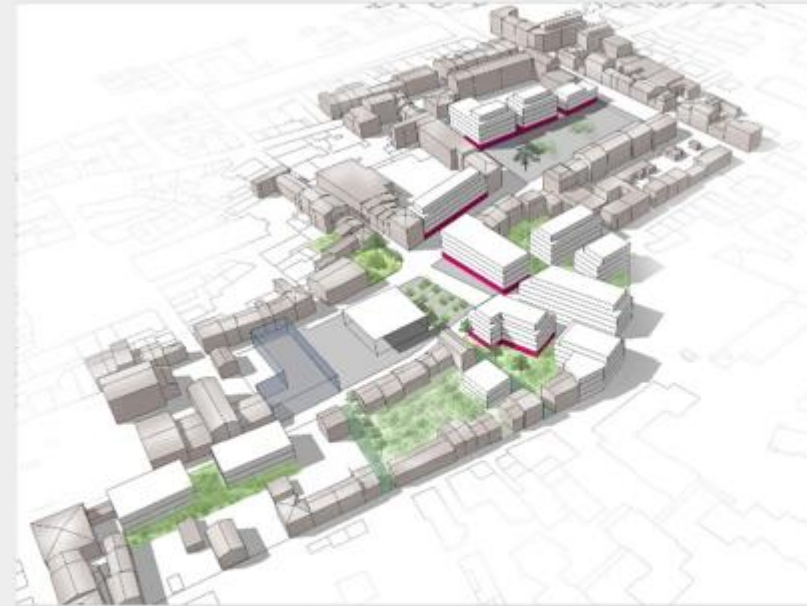


© Tangram et AUM
Architectes

Une mission conseil sur le site des anciennes blanchisseries HCL, Lyon 6*

Un Schéma de Référence réalisé en 2010 avait permis de définir les pistes de transformation et de programmation de ce site industriel appartenant aux HCL. L'Agence a depuis

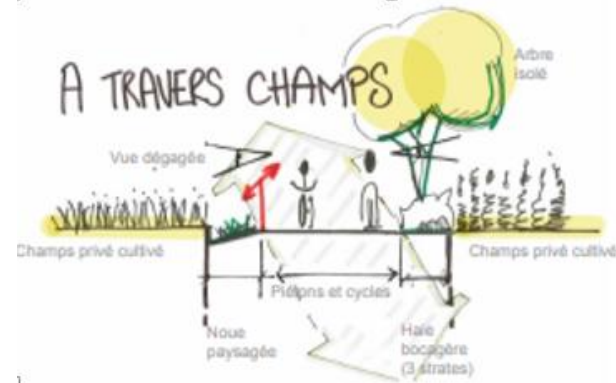
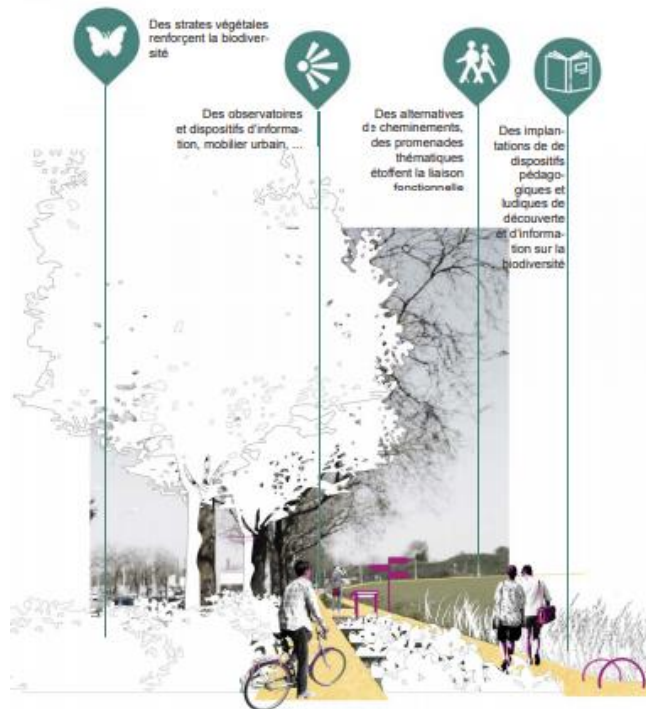
participé à la rédaction du cahier des charges de consultation et a accompagné la Ville de Lyon lors de l'instruction de ce dossier par la commission préalable des permis de construire.

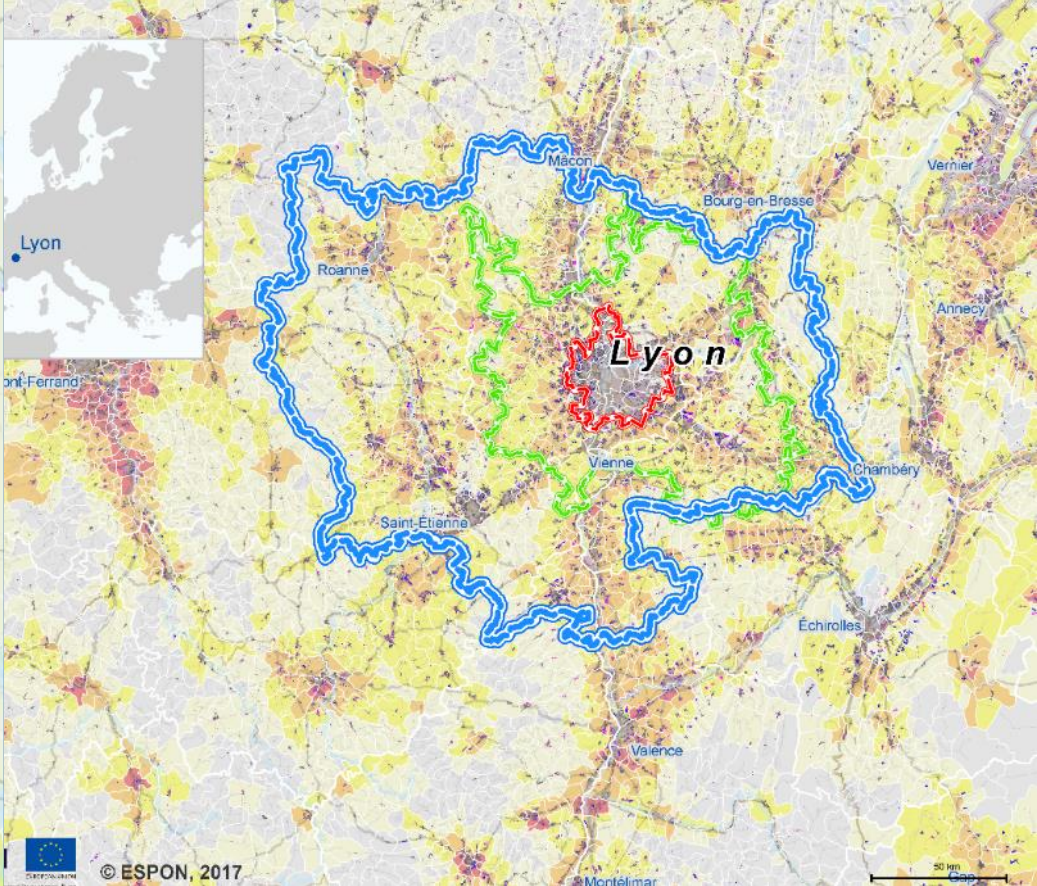
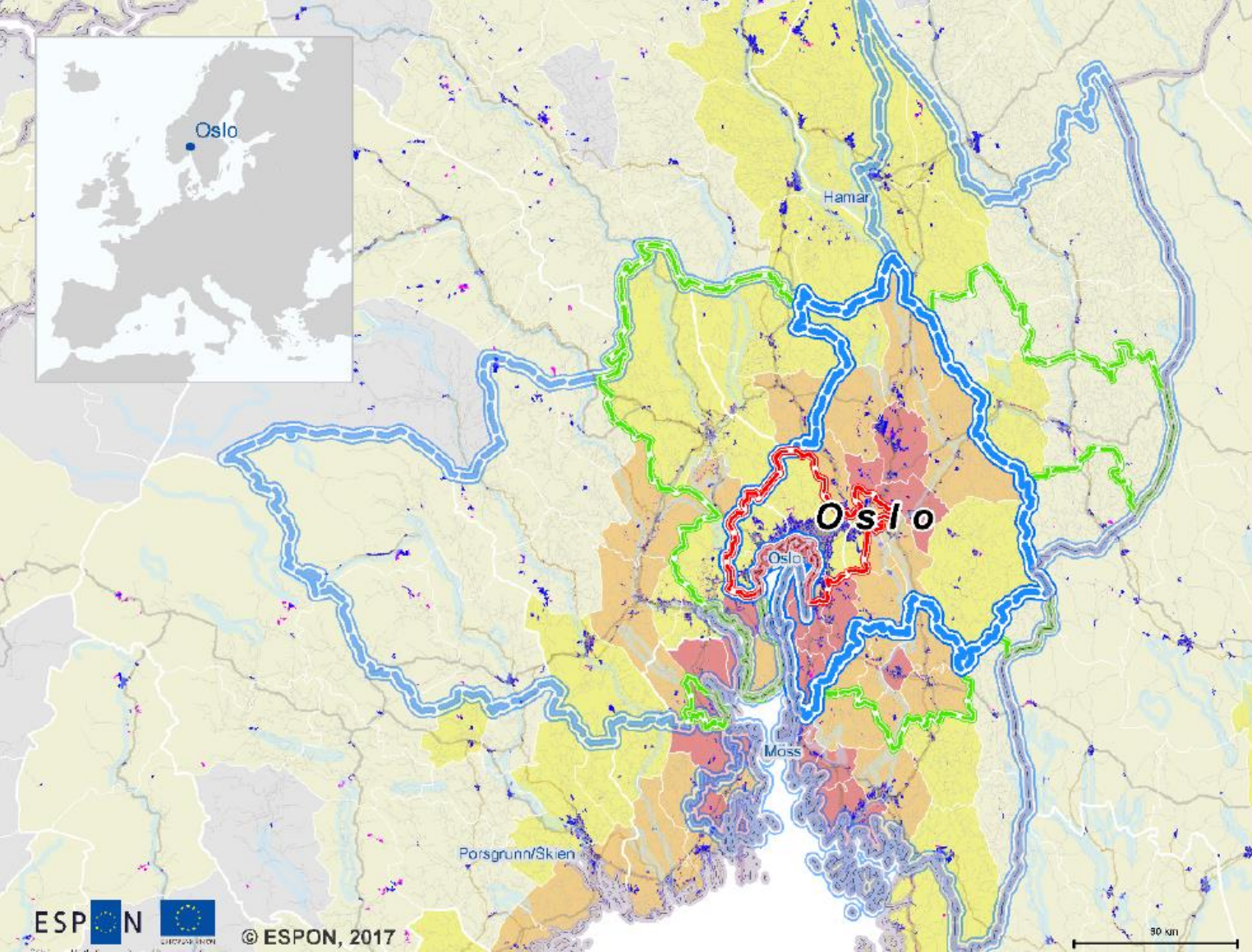


Définir la stratégie foncière pré-opérationnelle pour l'îlot Paul Bert, Bourgoin-Jallieu

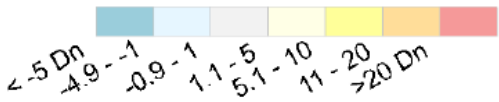
Dans la continuité des travaux réalisés avec la commune, notamment la modification n°01 du PLU et le cadrage urbain et paysager proposant une vision stratégique











du centre-ville, une étude de stratégie foncière pré-opérationnelle a été engagée avec l'appui d'EPORA afin de mesurer le niveau et la nature des investissements nécessaires à la modernisation de ce centre historique.



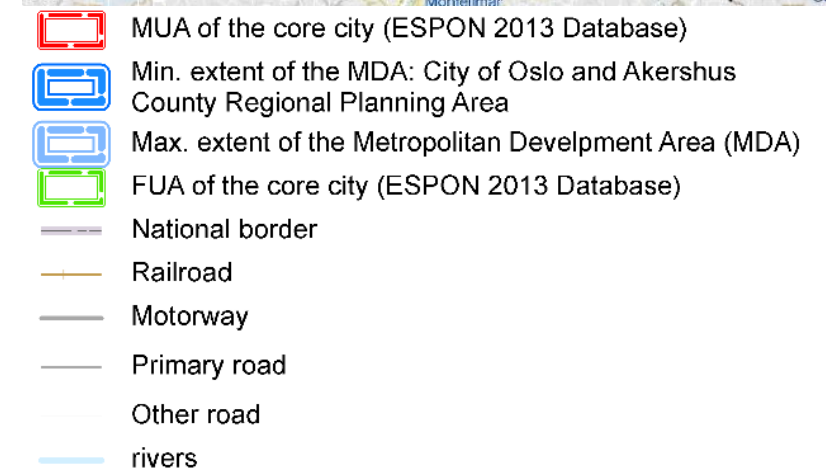
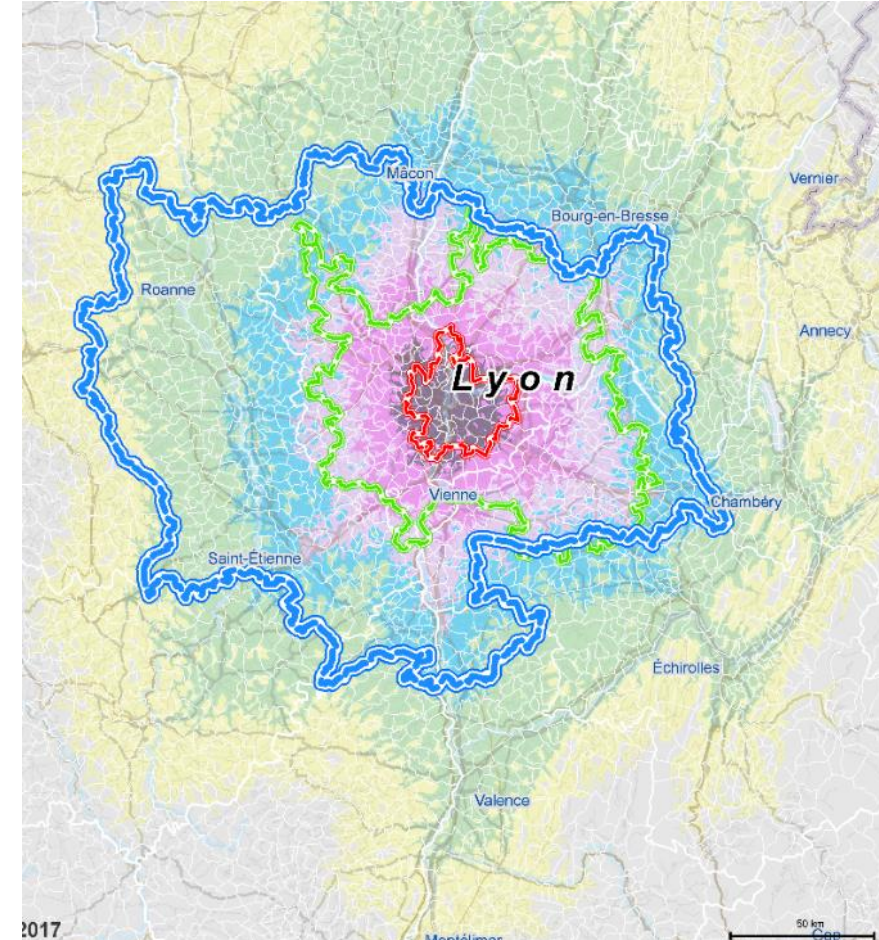
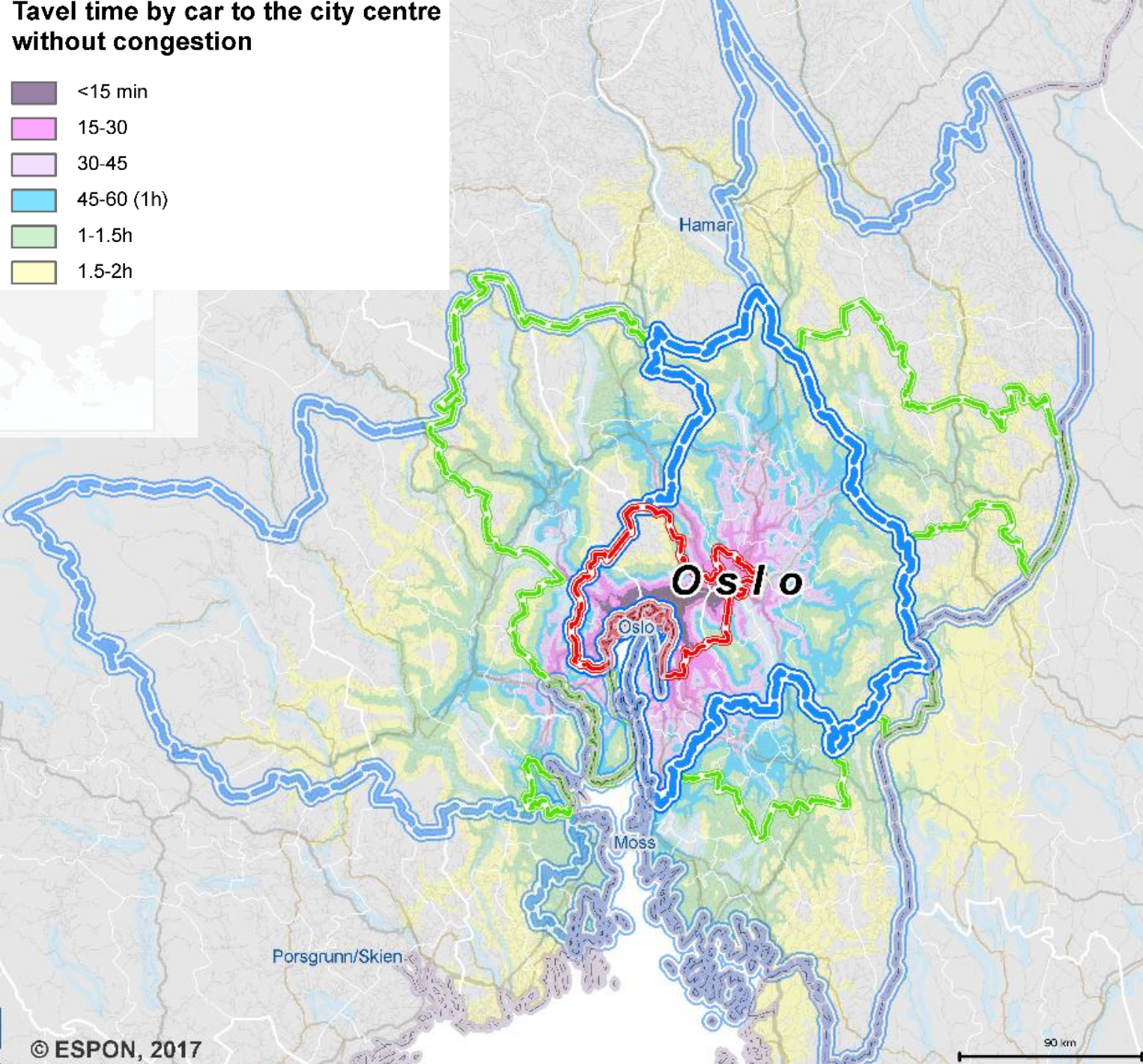
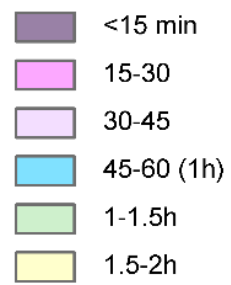


Increase in Night Light Intensity 1992 - 2012



-  MUA of the core city (ESPON 2013 Database)
-  Min. extent of the MDA: City of Oslo and Akershus County Regional Planning Area
-  Max. extent of the Metropolitan Development Area (MDA)
-  FUA of the core city (ESPON 2013 Database)
-  National border
-  Railroad
-  Motorway
-  Primary road
-  Other road
-  rivers

Tavel time by car to the city centre without congestion





Restaurant
Le café comptoir
2 place de l'hôpital

Urbalyon

Hôtel Ibis

Echelle 1 : 8 528

0 200 m



GIVORS

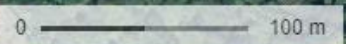
Le Rhône

Givors-ville
railway's station

Pôle
métropolitain
Maison du Rhône



Échelle 1 : 4 264



La Cité des étoiles
(stars neighbourhood)
de Jean Renaudie
1974-1981

