
Zurich Metropolitan Conference

Background, Organisation, Projects

Dr. Walter Schenkel, synergo GmbH, Grubenstrasse 12, 8045 Zurich
www.metropolitanraum-zuerich.ch, schenkel@synergo.ch



1+26+2300 Switzerland

Median

Schweiz: 1'200

Frankreich: 1'500

Italien: 7'100

Deutschland: 7'200

USA: 12'500

Dänemark: 18'500

Schweden: 30'000

Portugal: 34'000



Executive federalism in planning policy

Federal level

Subsidiarity

e.g. national transportation infrastructure

Cantonal level

Organisational / planning
autonomy

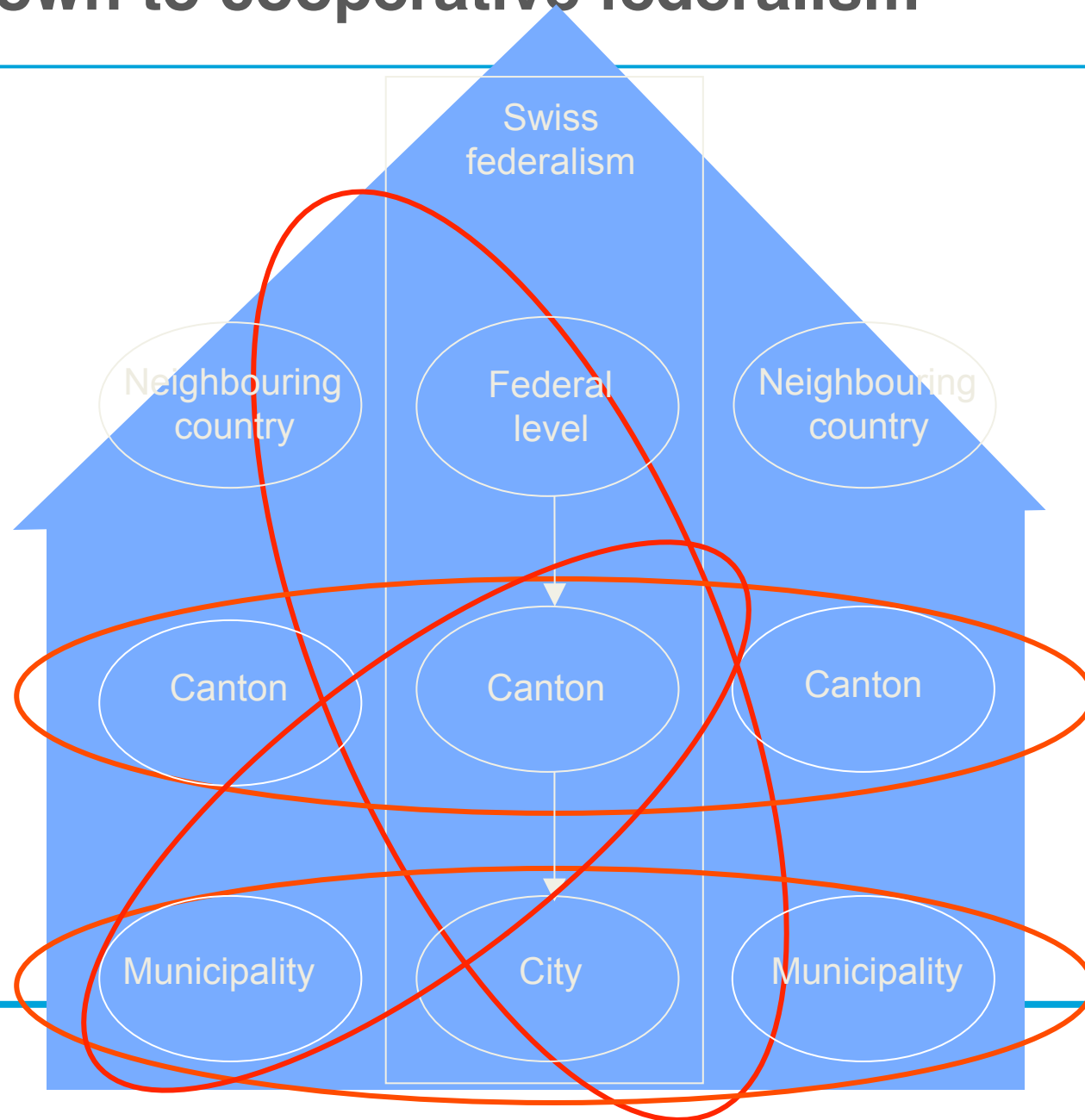
e.g. strategic planning, regional
transportation policy

Communal level

Communal autonomy

e.g. spatial/building planning,
local public transport

From top-down to cooperative federalism



Metropolis Switzerland

New forms of cooperation are needed, due to territorial, societal and economic changes



Quelle: Avenir Suisse

Zurich Metropolitan Area

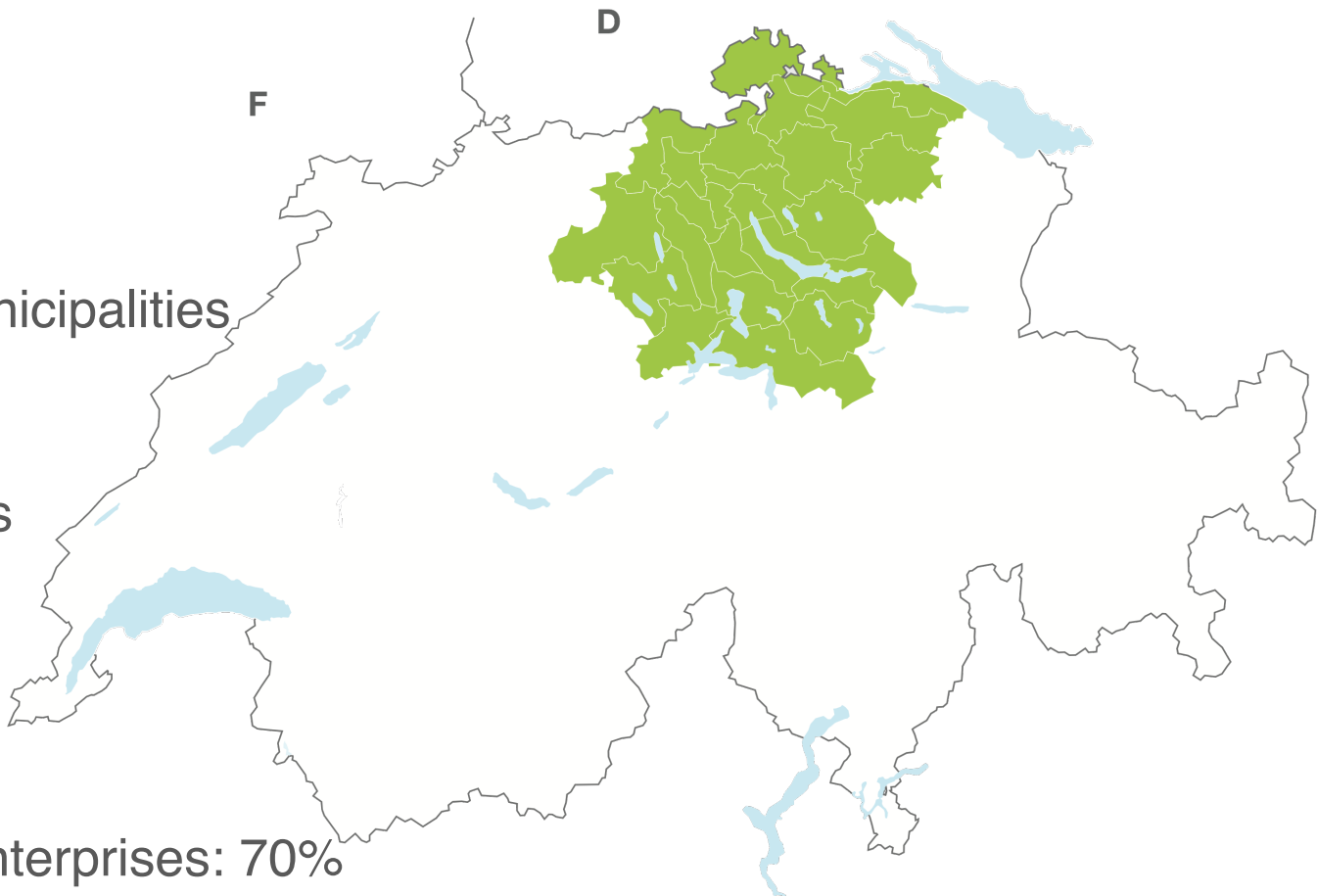
3m inhabitants

500 cities and municipalities
in 8 cantons

2m working places
(CH: 30%)

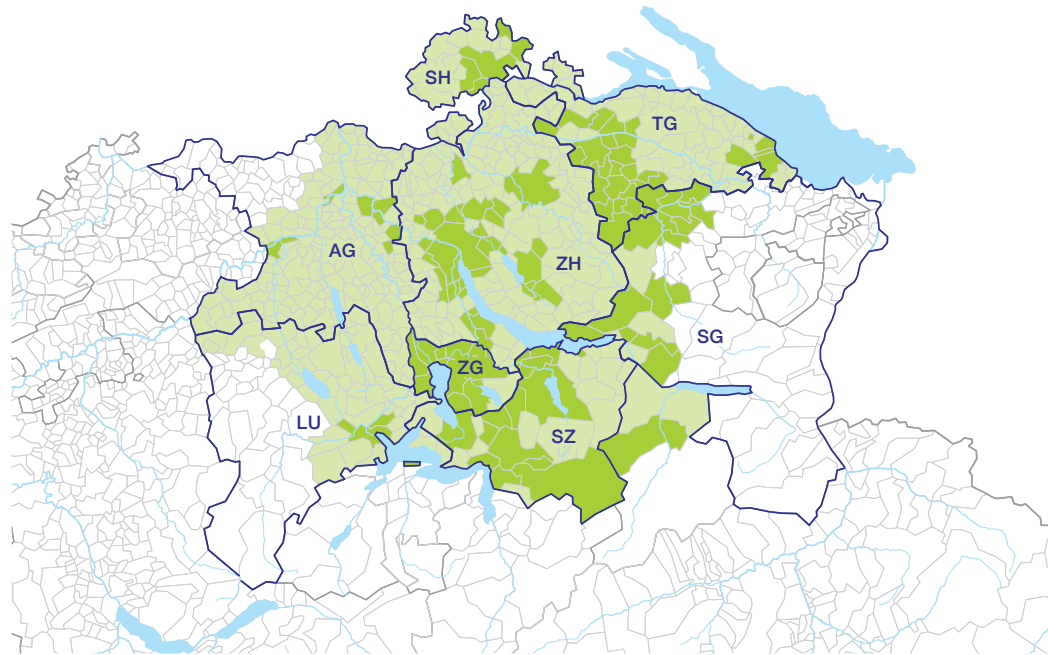
Swiss GDP: 40 %

Swiss top-1000 enterprises: 70%



Zurich Metropolitan Conference

Metropolitanregion Zürich



0 25 50 km

Raumgliederung: Politische Gemeinden (Stand 1.1.2018)

- funktionaler Raum
- Mitgliedsgemeinden
- Mitgliedskantone

Quelle: Metropolitankonferenz Zürich
Kartengrundlage: BFS, ThemaKart, Neuchâtel
© CRK - Michael Felber, 2018

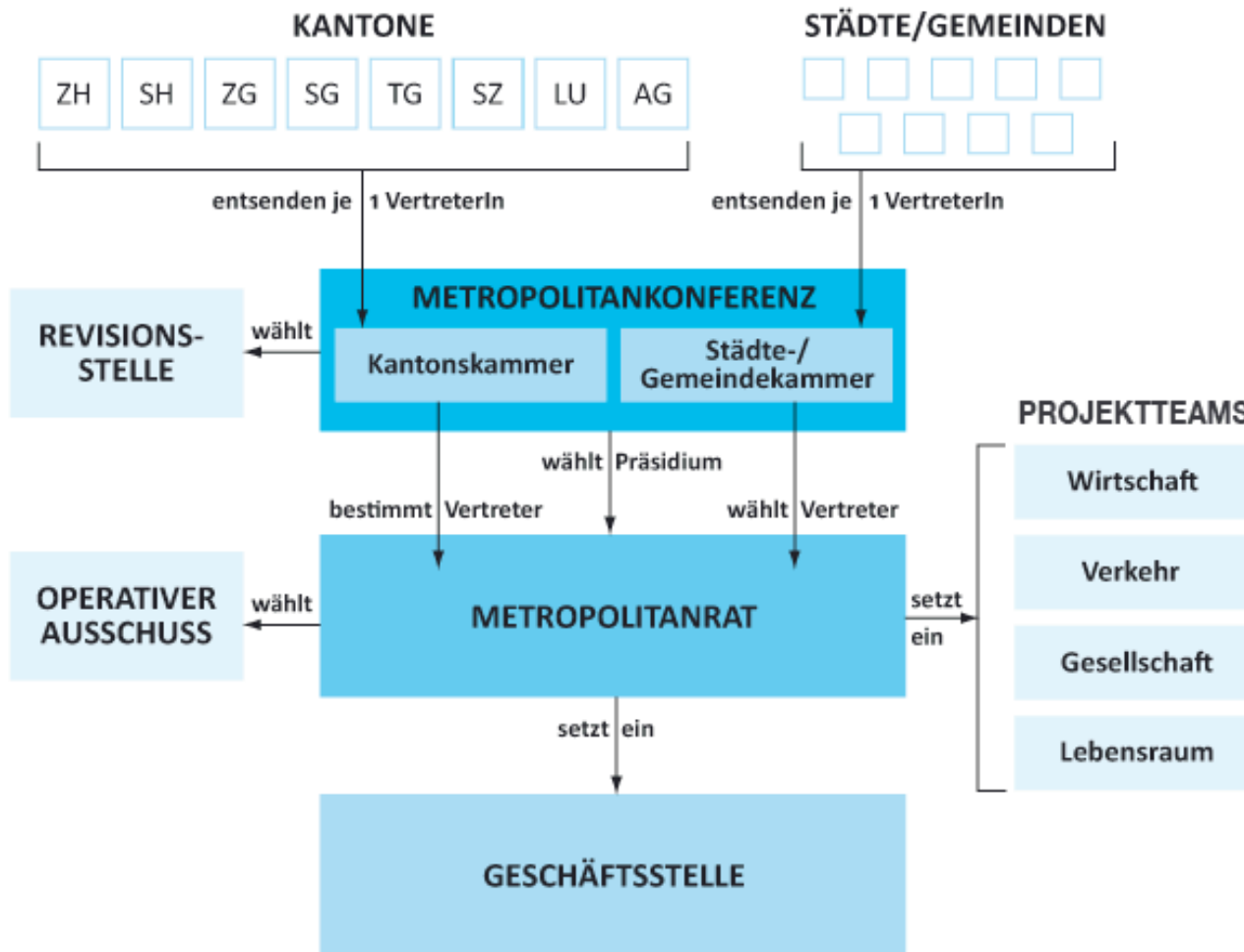
8 cantons and
110 cities and municipalities

Launching and supporting
innovative projects for the entire
metropolitan area

Dialogue, information exchange,
network building, lobbying

No binding decision-making
and implementation

Organisation



An aerial photograph of a mountainous region, likely in the Alps, showing a river winding through the valleys and several lakes. The terrain is rugged and green. A large black banner is overlaid on the image, containing white text. A scale bar is visible in the bottom right corner.

8 cantons

12 agglomerations

+ 300'000 inhabitants in 2030 ?

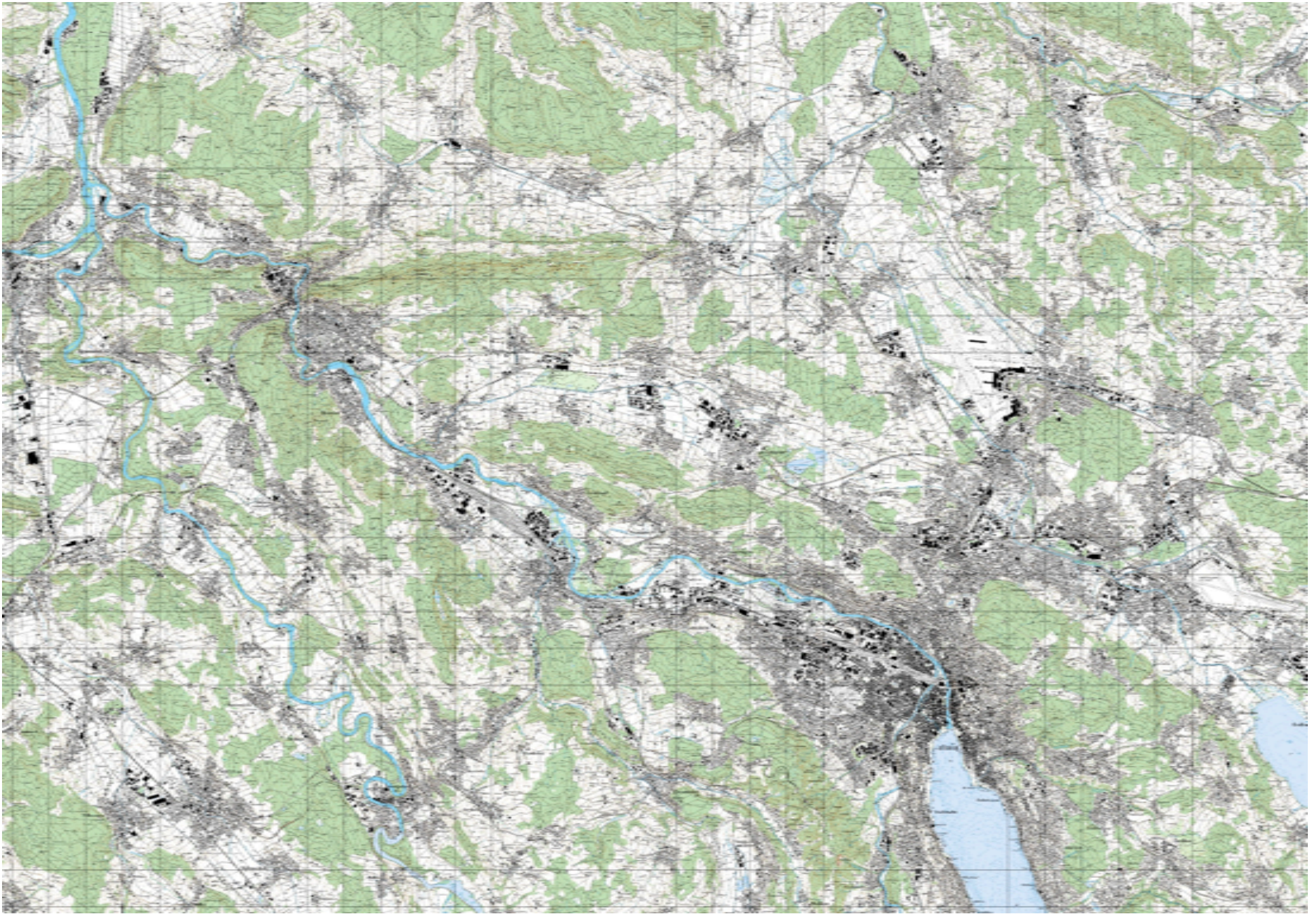
2m inhabitants

1m working places

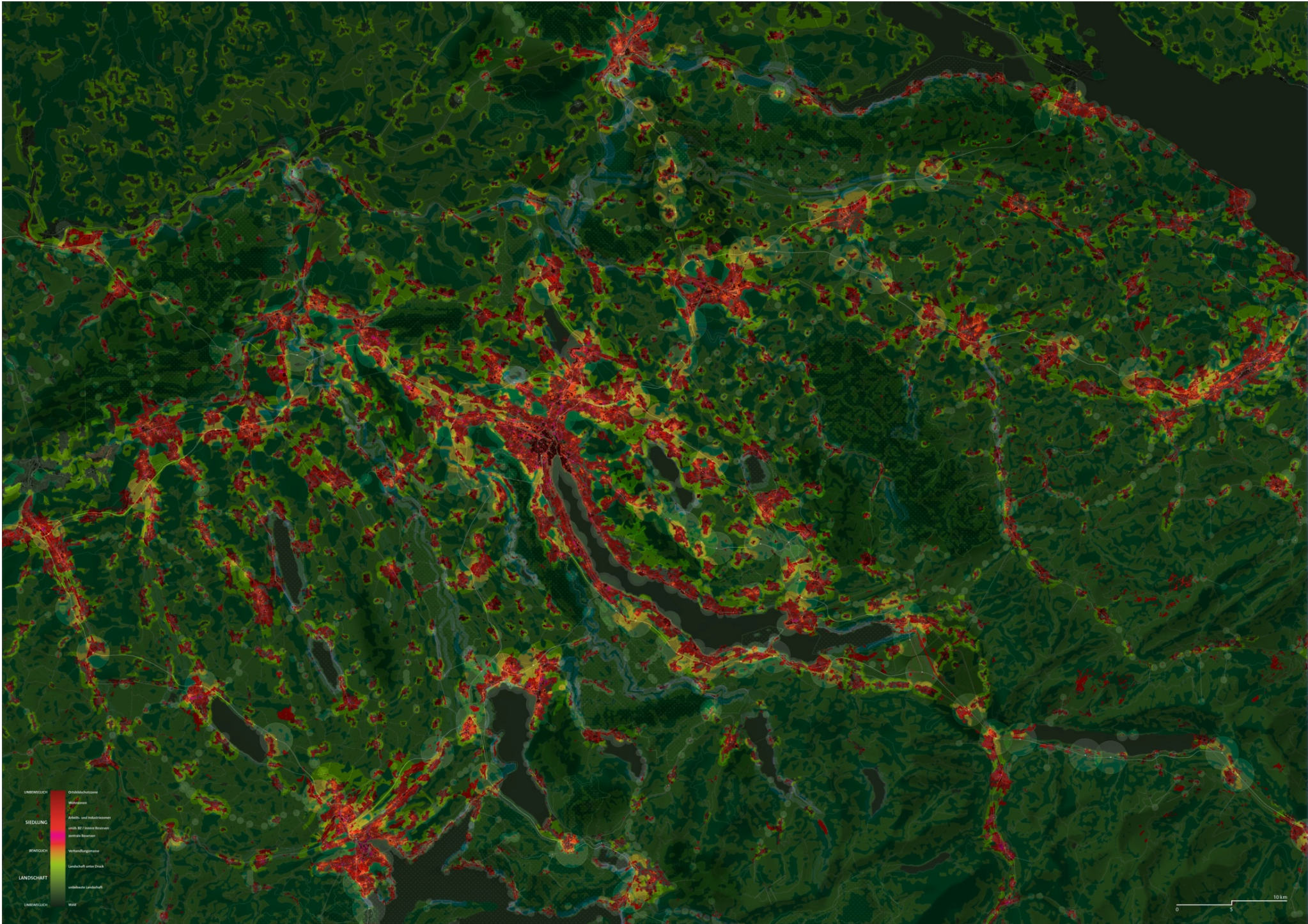
1km 2km 5km 10km



1950



2000



Corridor city ?

UNBEWEGLICH
SIEDLUNG
BEWEGLICH
LANDSCHAFT
UNBEWEGLICH



- Urbalandschaft
- Städteräume
- Arbeits- und Industriezonen
- mit hohem Verkehrsaufkommen
- Landwirtschaft
- Landwirtschaft unter Druck
- unbebaute Landschaft
- Wald

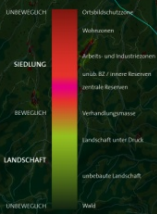
Fokus Erschließungskorridore



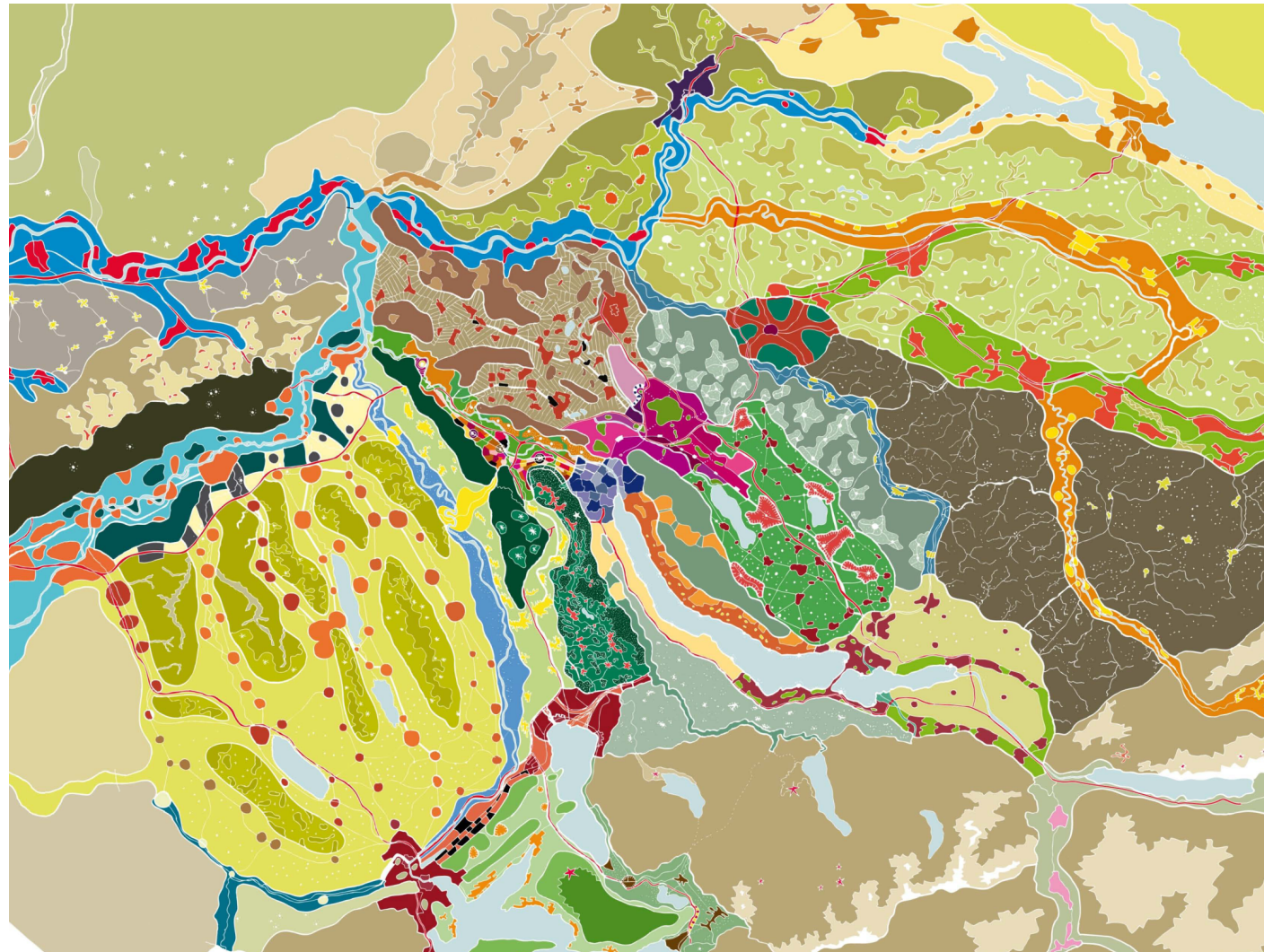
Metropolitan city ?



Polycentric city ?

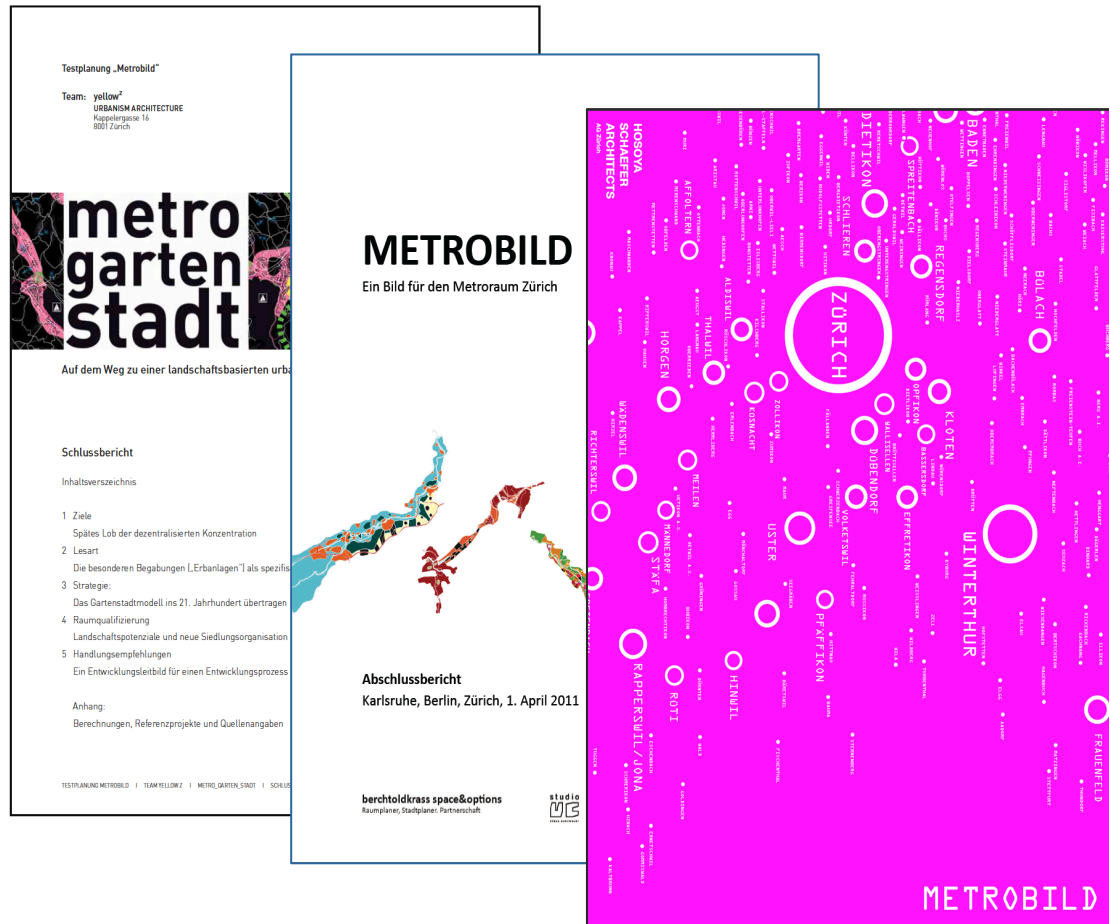


Spatial quality (1)

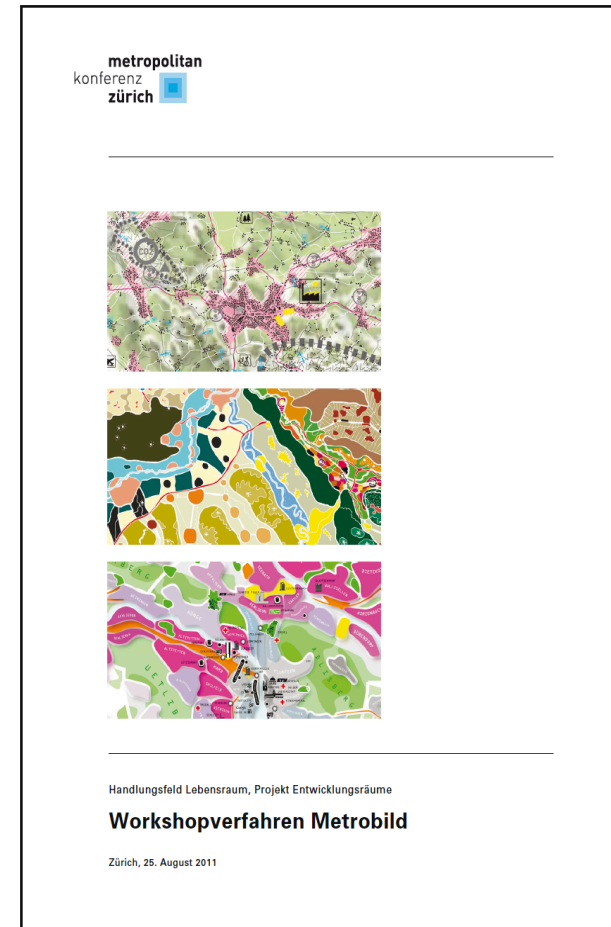


Spatial quality (2)

3 team reports

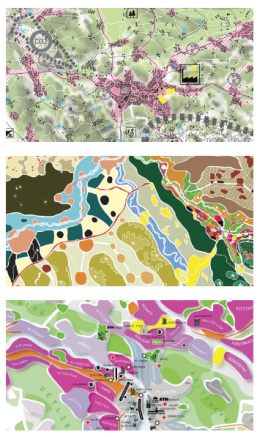


Jury report



Spatial quality (3)

metropolitan
konferenz
zürich

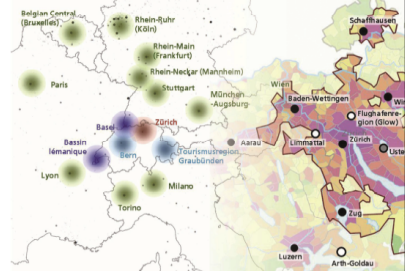



Handlungsfeld Lebensraum, Projekt Entwicklungsräume
Workshopverfahren Metrobild
Zürich, 23. September 2011

Metropolitankonferenz Zürich, Arbeitsgruppe Verkehr

Prioritäre Massnahmen Schiene und Strasse zur Verbesserung der Erreichbarkeit

Technischer Schlussbericht
25.01.2011





Ernst Basle

metropolitan
konferenz
zürich

Gesamtkonzept, Stand 22.3.2011

Der Metropolitanraum Zürich als Parklandschaft




quadra gmbh
beraten/ gestalten/ projektieren/ realisieren
Nordstrasse 220
8032 Zürich
t 043 366 63 90 / f 043 366 63 91
www.quadragmbh.ch

metropolitan
konferenz
zürich

Fachbericht
Mehrwert durch Verdichtung

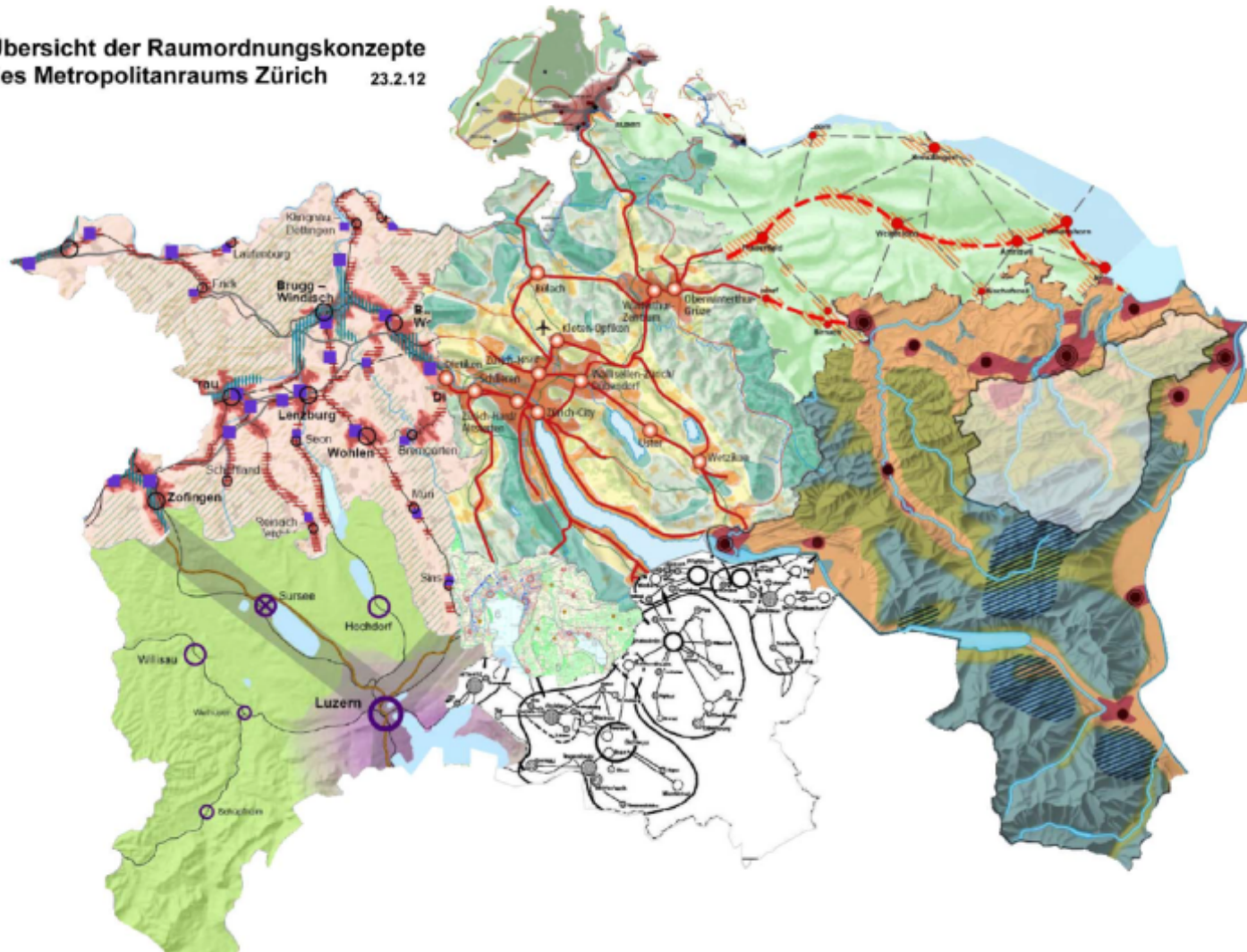
Darstellung und Diskussion möglicher Vorgehensweisen zum Ausgleich planungsbedingter Mehrwerte



metropolitan
konferenz
zürich

8 uncoordinated strategic spatial concepts

Übersicht der Raumordnungskonzepte
des Metropolitanraums Zürich 23.2.12



1 strategic spatial concept

Raumordnungskonzept für die Kantone im Metropolitanraum Zürich

1:500'000

Handlungsräume

- Stadtlandschaft
- Zwischenlandschaft
- Kulturlandschaft
- Naturlandschaft

Zentren

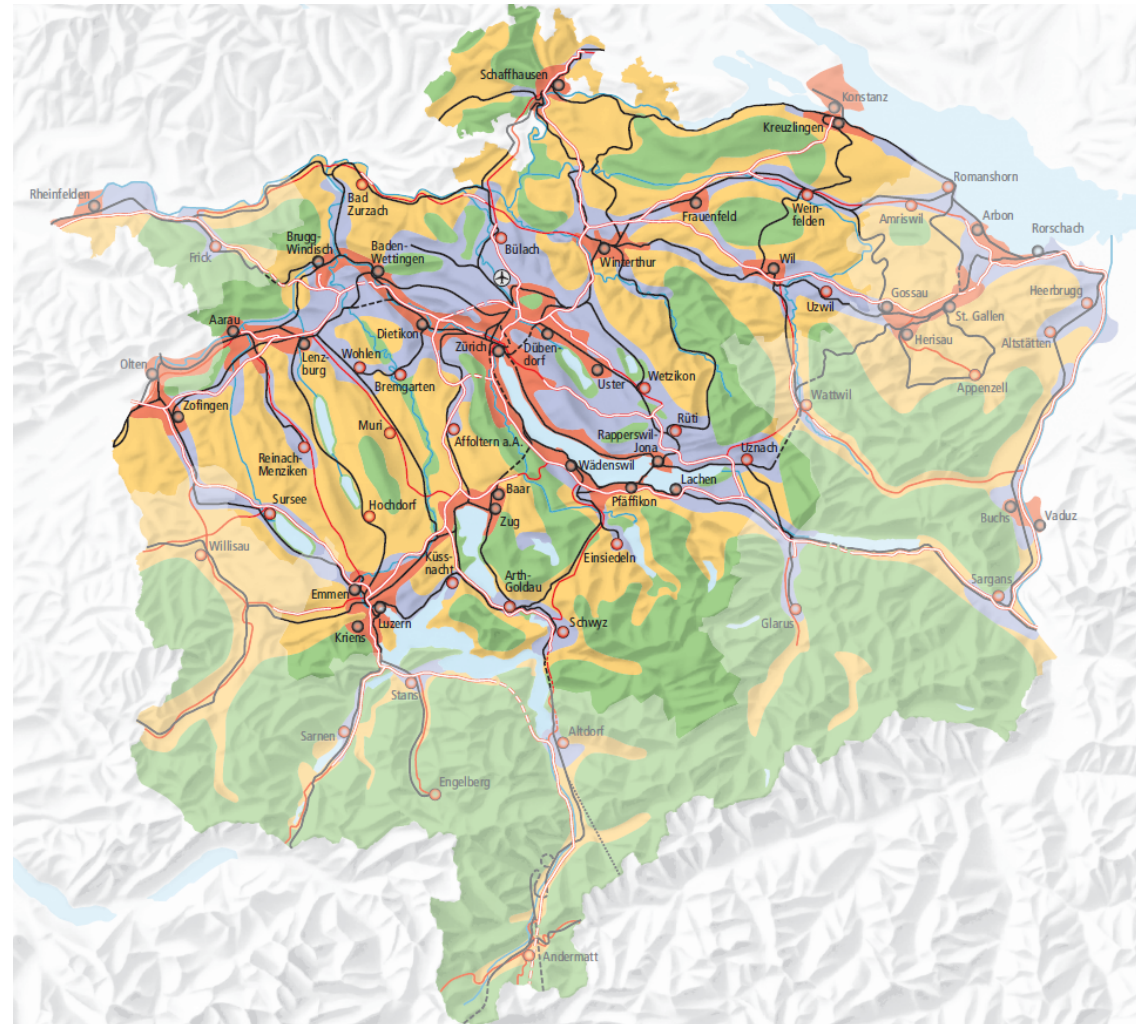
- Zentrum in der Stadtlandschaft
- Regionales Zentrum

Verkehr

- Hochleistungsstrasse
- Hauptverkehrsstrasse
- Bahnlinie
- NEAT (im Bau)
- Internationaler Flughafen

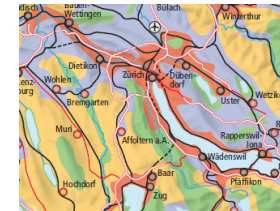
Hinweis

Kräftigere Farbe
Bearbeitungshorizont: vorhandene Berechnungsgrundlagen zu Bevölkerungsentwicklung und Nutzungskapazitäten im Metropolitanraum Zürich
Abgeschwächte Farben
Betrachtungshorizont: Abstimmung mit Kantonen im erweiterten Metropolitanraum Zürich

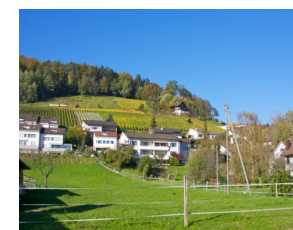
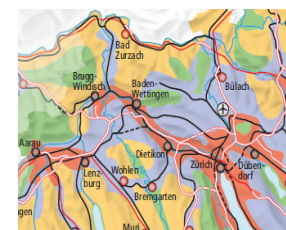


Metro-ROK – spaces of action

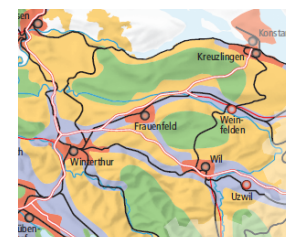
Urban landscape: 80% of the future population growth, at least 15' PT interval



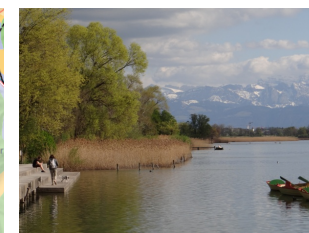
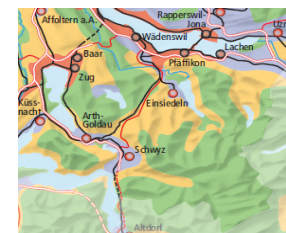
Transitional landscape: focus on regional centre developments, 30' PT interval



Cultural landscape: no more urban sprawl, 60' PT interval



Natural landscape: no more quantitative growth, no more new traffic infrastructures



Source: Metro-ROK Metropolitanraum Zürich, 2015

Accessibility (1)



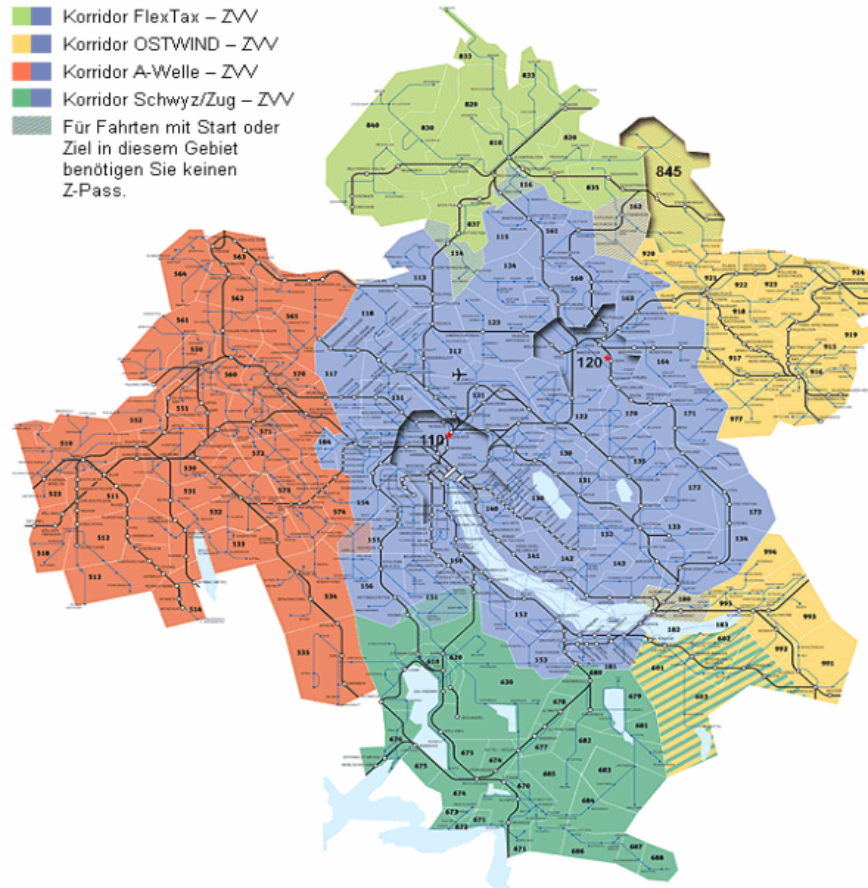
Rail

Road

Mobility

Financing

Accessibility – no action needed



ZVV, SBB, VBZ, etc.

380 km S-Bahn since 1990

High tram and bus density

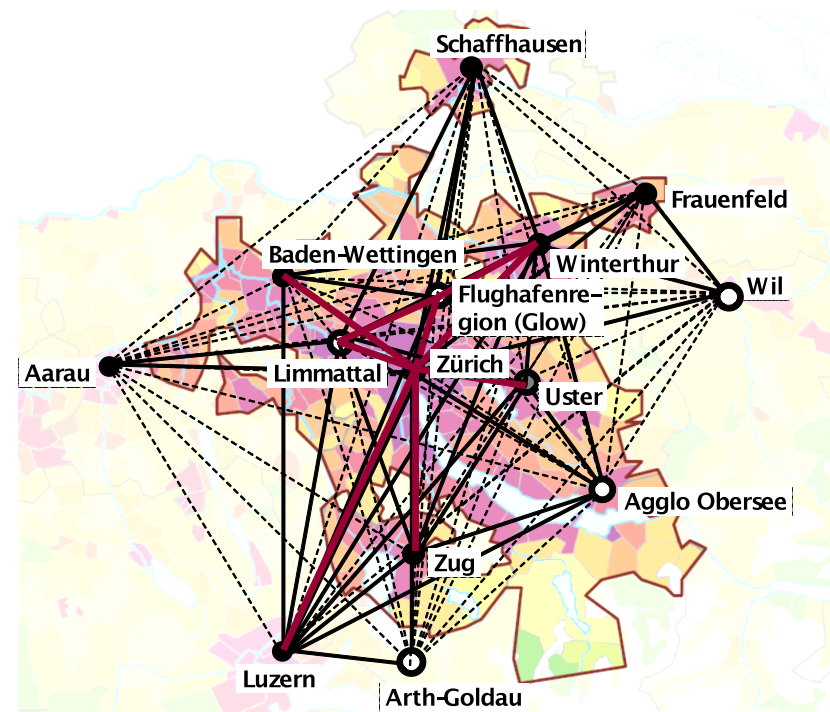
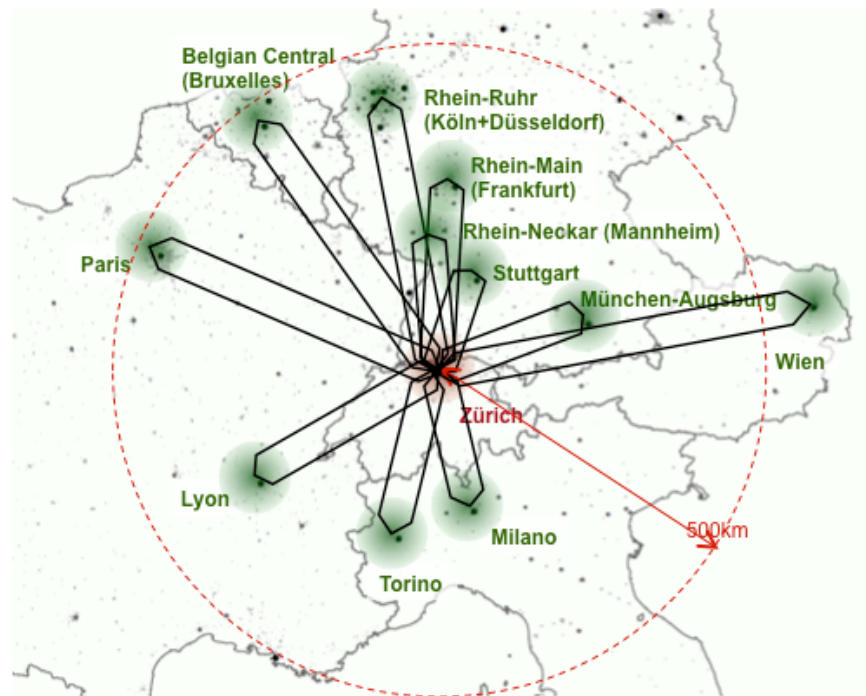
30 lines und 180 stations

1000 trains per day

600'000 commuters in/out Zurich

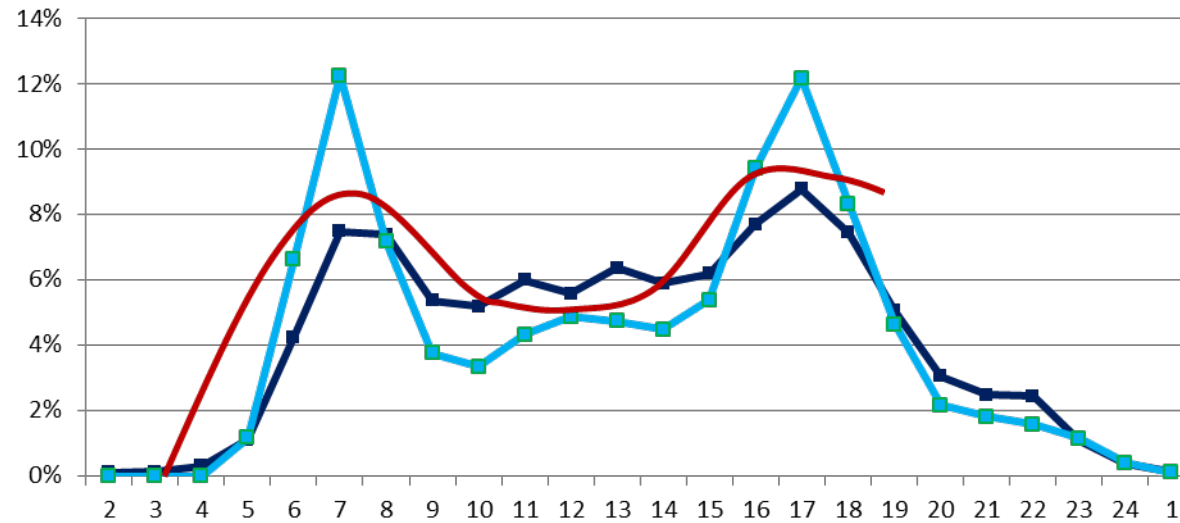
One ticket

Accessibility – action needed



Accessibility – action needed

Traffic spikes break (home office, working and school times, etc.)



Projects in other policy fields



Doing family

Recommendations towards a new understanding of family policy



Green Region

Increasing energy efficiency in municipalities and SMEs



Structural change in retail trade

Fields of action and measures for retail business and public hand

Cooperation program

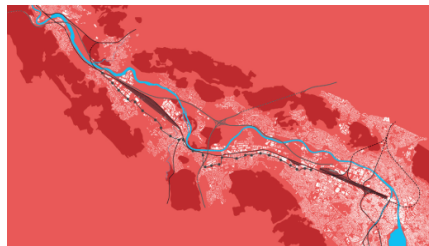
Vision 2030	1	Solutions for new challenges <ul style="list-style-type: none">I Skilled personnelII Industry / services 4.0III Public servicesIV Dealing with growth
Visibility	2	Strong identification
Practical suitability	3	Cooperation among members

Cooperation program – dealing with growth



Smart Use

Big Data in spatial planning



3D city model

Virtual reality in regional and local development



Gas infrastructures

What is the future of communal gas supply?



Last mile logistics

New innovative solutions in city logistics

Contact

www.metropolitanraum-zuerich.ch

Geschäftsstelle Verein Metropolitanraum Zürich

Walter Schenkel, Dr., Politologe

synergo, Mobilität-Politik-Raum

Grubenstrassen 12, 8045 Zürich

T: +41 43 960 77 33, Email: info@metropolitanraum-zuerich.ch