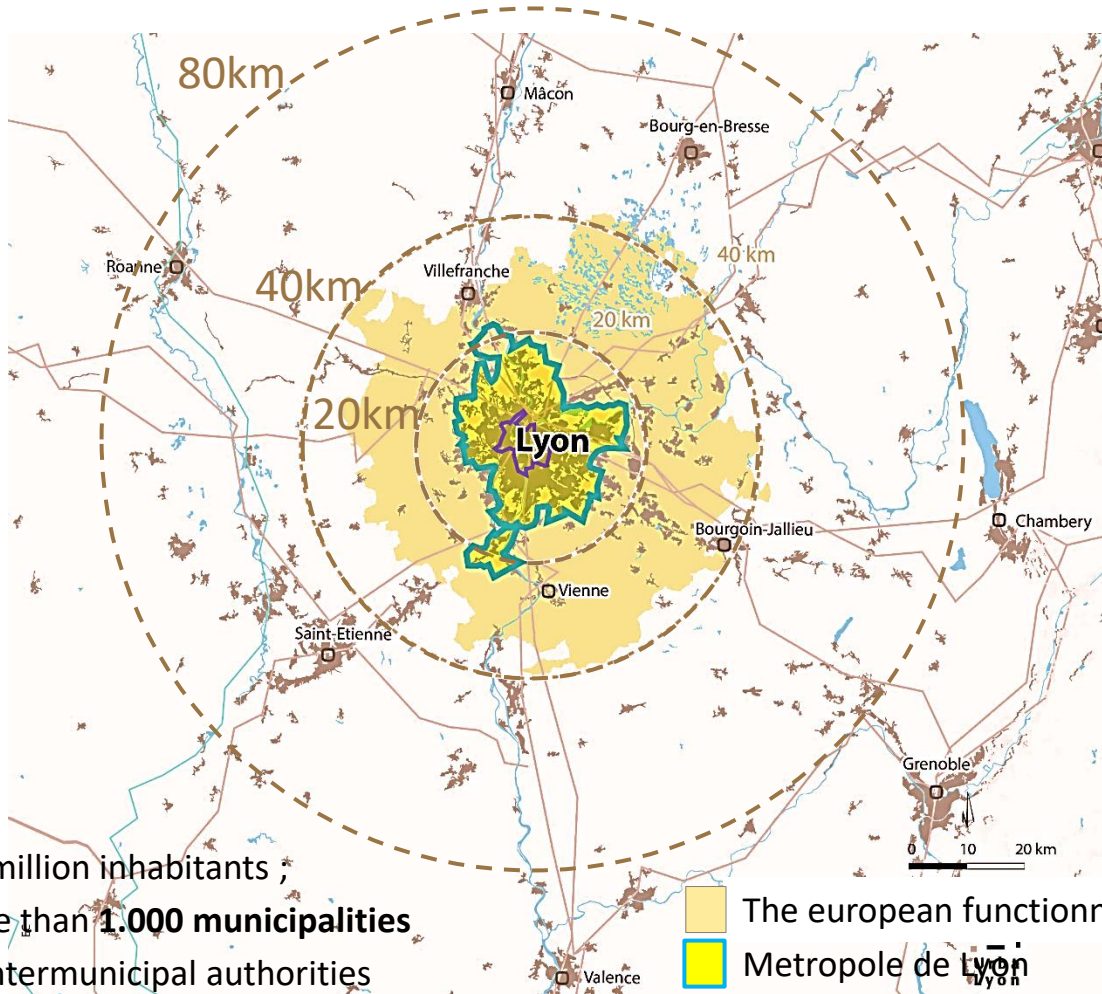


OSLO

Présentation de la métropole de Lyon et de l'aire d'influence, chiffres clé, date, compétences, gouvernance

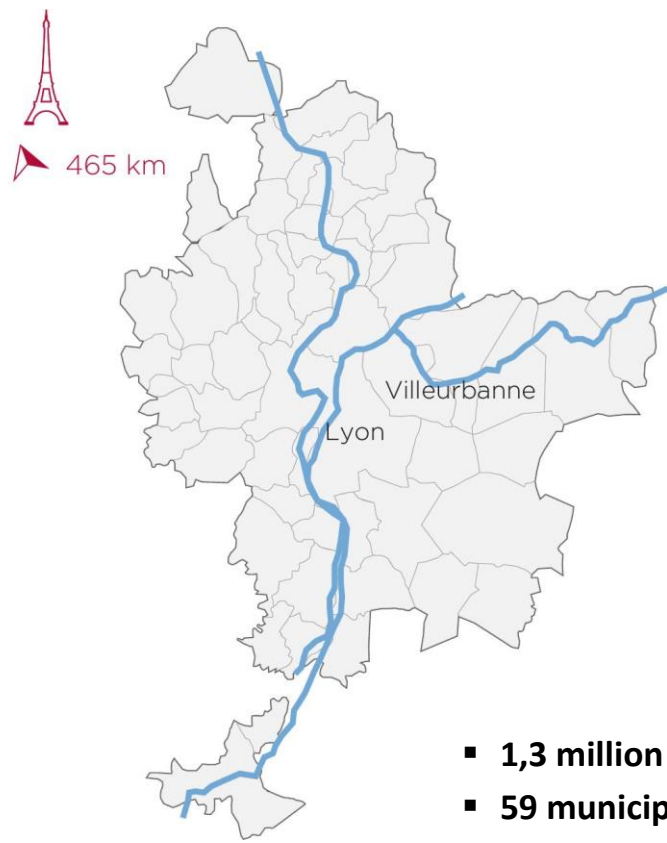
Présentation de la planification métropole de Lyon : le cadre supra du Sepal et le PLUI-H

Lyon Metropolitan Area



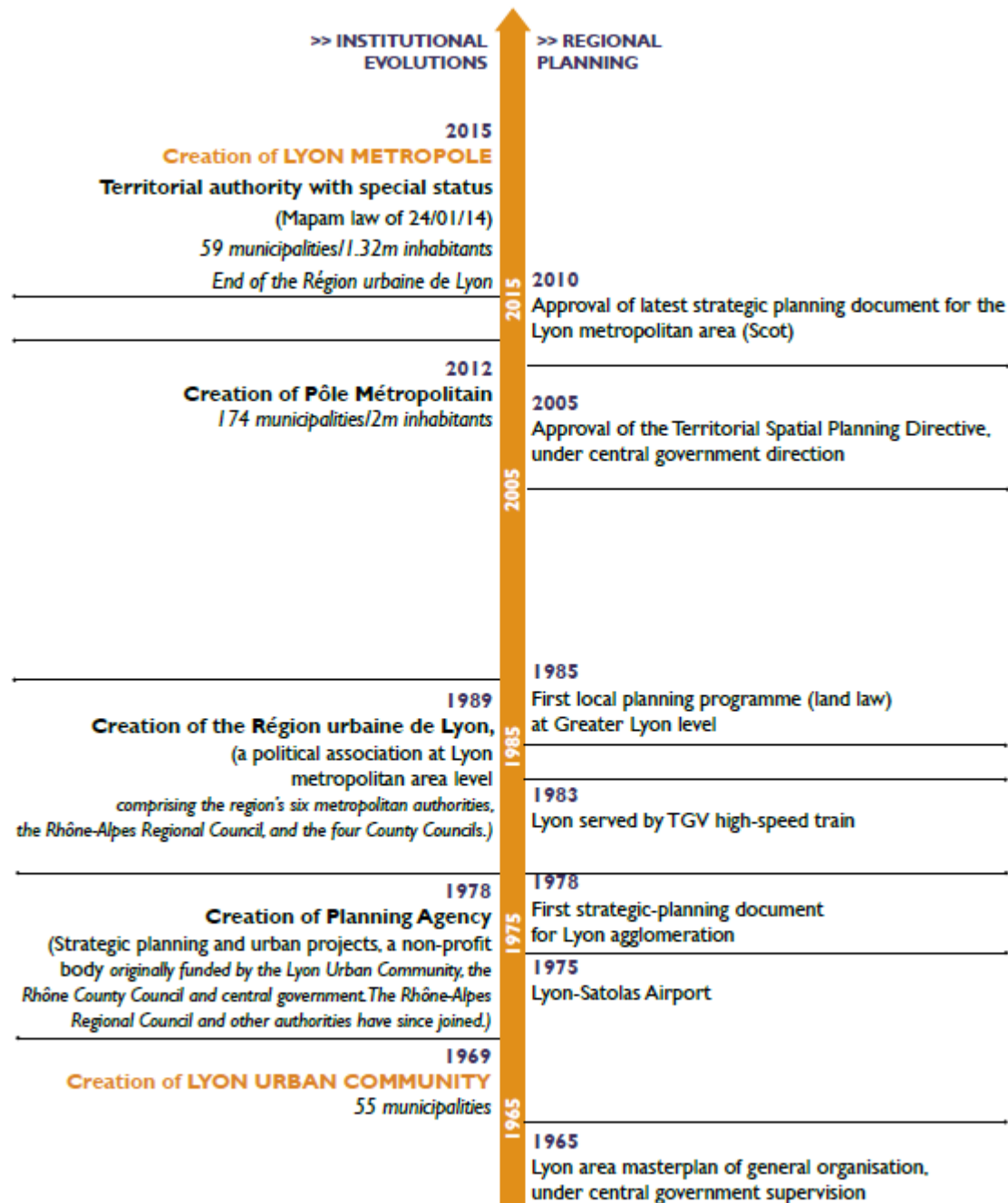
- **3,3 million inhabitants ;**
- **more than 1.000 municipalities**
- **60 intermunicipal authorities**
- **included the 2 main fonctionnal areas : Lyon 2,2M & St Etienne. 0,5 M hab**
- **6 cities more than 50 000 inhabitants**
- **1,4 million jobs / 150.000 students**
- **90% of green and agricultural spaces**
- **13 transportation authorities (excluding motorway companies and airport companies)**

Metropole de Lyon



- **1,3 million inhabitants ;**
- **59 municipalities**
- **9 200 salaried staff**
- **Budget : 3,5 Billion € in 2017**
- **650 000 jobs**
- **145 000 students**
- **25 980 ha , or 48% green and agricultural spaces and water**

Lyon Metropole's development : Key dates



Water and sewerage

- Supply of drinking water
- Sewerage management
- Protection of aquatic habitats
- Flood prevention

4,000 km for drinking water system

Cleanliness

- Waste collection and treatment
- Management of waste-disposal facilities
- Cleaning of public spaces

523,000 tons of waste collected and sorted per year

Major projects and urban planning

- Planning of public spaces and green spaces
- Draws up local plan for urbanism and living environment (PLU-H)
- Management of Parilly and Lacroix-Laval parks

Ecological and energy transition

- Protection of air quality and natural spaces
- Encouragement of waste sorting and prevention
- Support for peri-urban farming
- Assistance for energy transition

22,575 ha, i.e. 43% farmland and natural spaces

Employment and economic development

- Support for business property
- Funding for professional inclusion and entrepreneurship
- Business attractiveness and assistance
- Development of superfast broadband networks

Knowledge and culture

- Support for university
- Construction and maintenance of lower-secondary schools
- Management of the Musée des Confluences and the Fourvière Gallo-Roman Museum
- Support for major cultural and sporting events
- Funding for voluntary-sector bodies and amateur sports clubs
- Support for art activities

Attractiveness and reputation

- Support for innovation and competitiveness clusters
- Attractiveness; hosting of tourists and large congresses

135,000 companies

5 competitiveness clusters

Children and family

- Delivers authorisations for childminders and childcare centres
- Hosts families and parents-to-be in maternal and child welfare centres (PMI)
- Assistance for adoption
- Protection of mistreated children
- Family planning and education centres (CPEF)

Solidarity

- Support for elderly and disabled people
- Public health actions
- Execution of urban policy
- Allocation of active solidarity allowance (RSA)

Living environment and housing

- Support for construction
- Enhancement of affordable housing for all
- Support for thermal insulation and refurbishment
- Funding of social housing
- Facilitation of first home buying

10,000 new homes per year

Transport

- Development of public transport (via Sytral, multi-tier body for transports for Rhône and Lyon agglomeration)
- Development of cycling network and encouragement of alternative travel modes
- Maintenance of roads, bridges and tunnels
- Management of North Toll Ringroad and highways

3.9 million travellers per day,
of which 630,000 on public transport

6 million tourists per year

Main income sources

66%: taxation (€ 1,746 M)

20%: state subsidies (€ 533 M)

14%: diverse management resources (€ 358 M)

Budget 2014

3,202,828,000 €

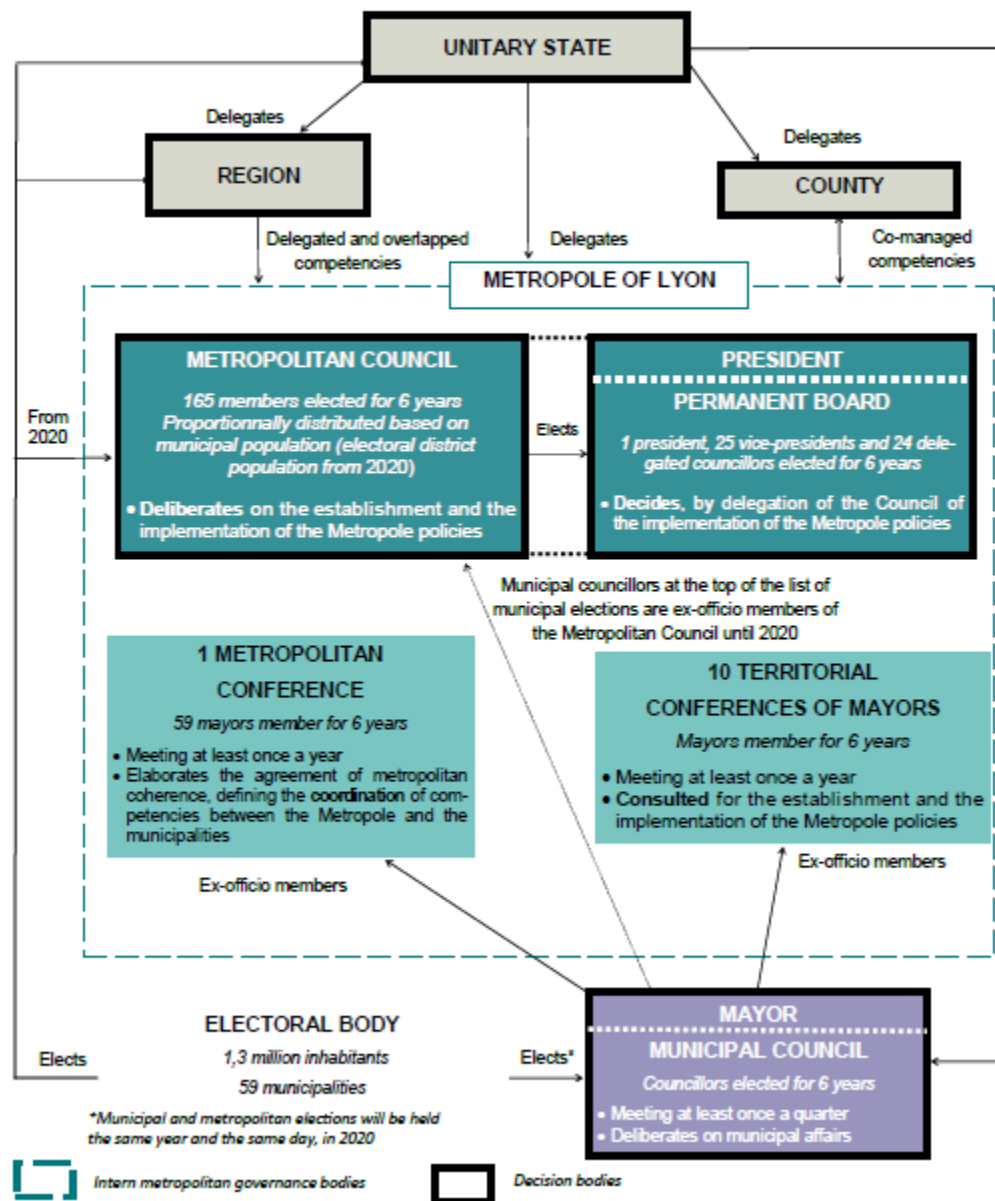
Investment expenditures

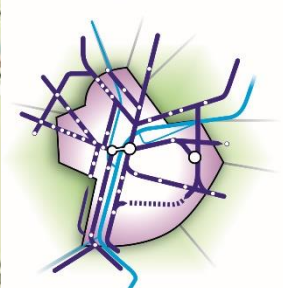
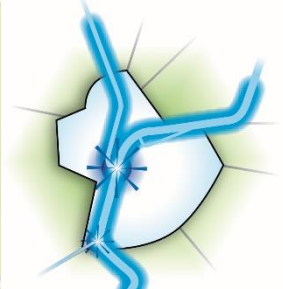
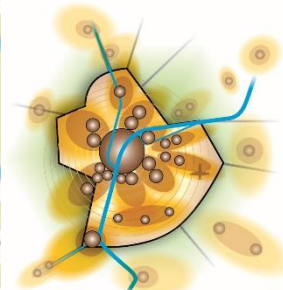
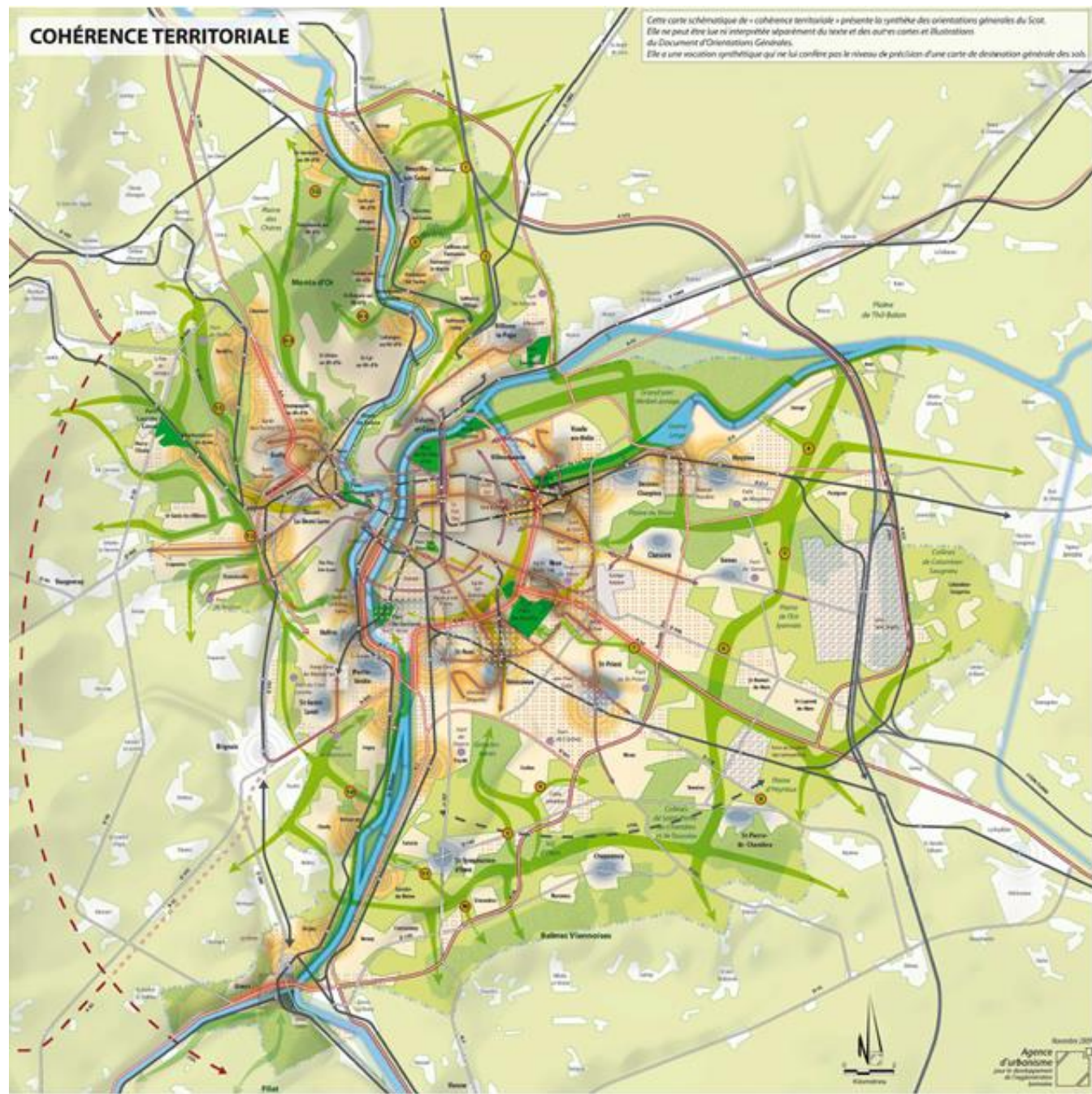
810 million euros (forecast 2015)

Operating expenditures

2390 million euros

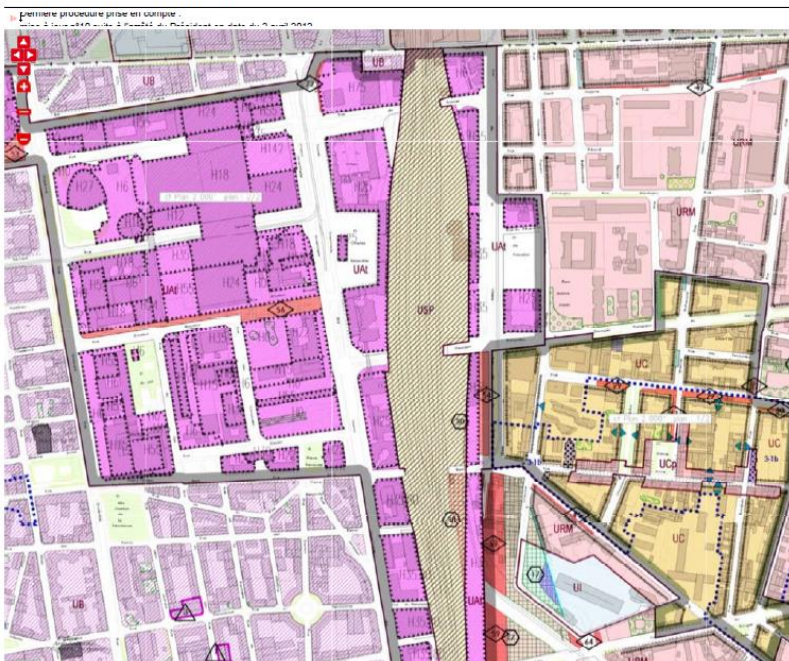
Metropolitan governance and delegation of authority: Lyon Metropole





The Grand Lyon metropole, common Local Urban Plan for the 59 municipalities

Plan Local d'Urbanisme



Zoning rules

Urbaines

UB (Zone Urbaine)	UB Co (Zone Urbaine Compacte)	UB Co L (Zone Urbaine Compacte Linéaire)	UB Co L2 (Zone Urbaine Compacte Linéaire 2)	UB Co L3 (Zone Urbaine Compacte Linéaire 3)	UB Co L4 (Zone Urbaine Compacte Linéaire 4)
UB Co L5 (Zone Urbaine Compacte Linéaire 5)	UB Co L6 (Zone Urbaine Compacte Linéaire 6)	UB Co L7 (Zone Urbaine Compacte Linéaire 7)	UB Co L8 (Zone Urbaine Compacte Linéaire 8)	UB Co L9 (Zone Urbaine Compacte Linéaire 9)	UB Co L10 (Zone Urbaine Compacte Linéaire 10)

A urbaniser

Agricoles

Naturelles

AUTRES PRESCRIPTIONS

Les emplacements réservés

Servitudes L.123-2

Dispositions particulières aux activités économiques

Prescriptions relatives au patrimoine végétal et bâti

Prescriptions relatives à l'implantation des constructions

Prescriptions d'aménagement

Périmètres de Risques

Building height rules

LES HAUTEURS SUR VOIE

7 mètres	10 mètres
13 mètres	16 mètres
20,5 mètres	22 mètres
	25 mètres
	28 mètres

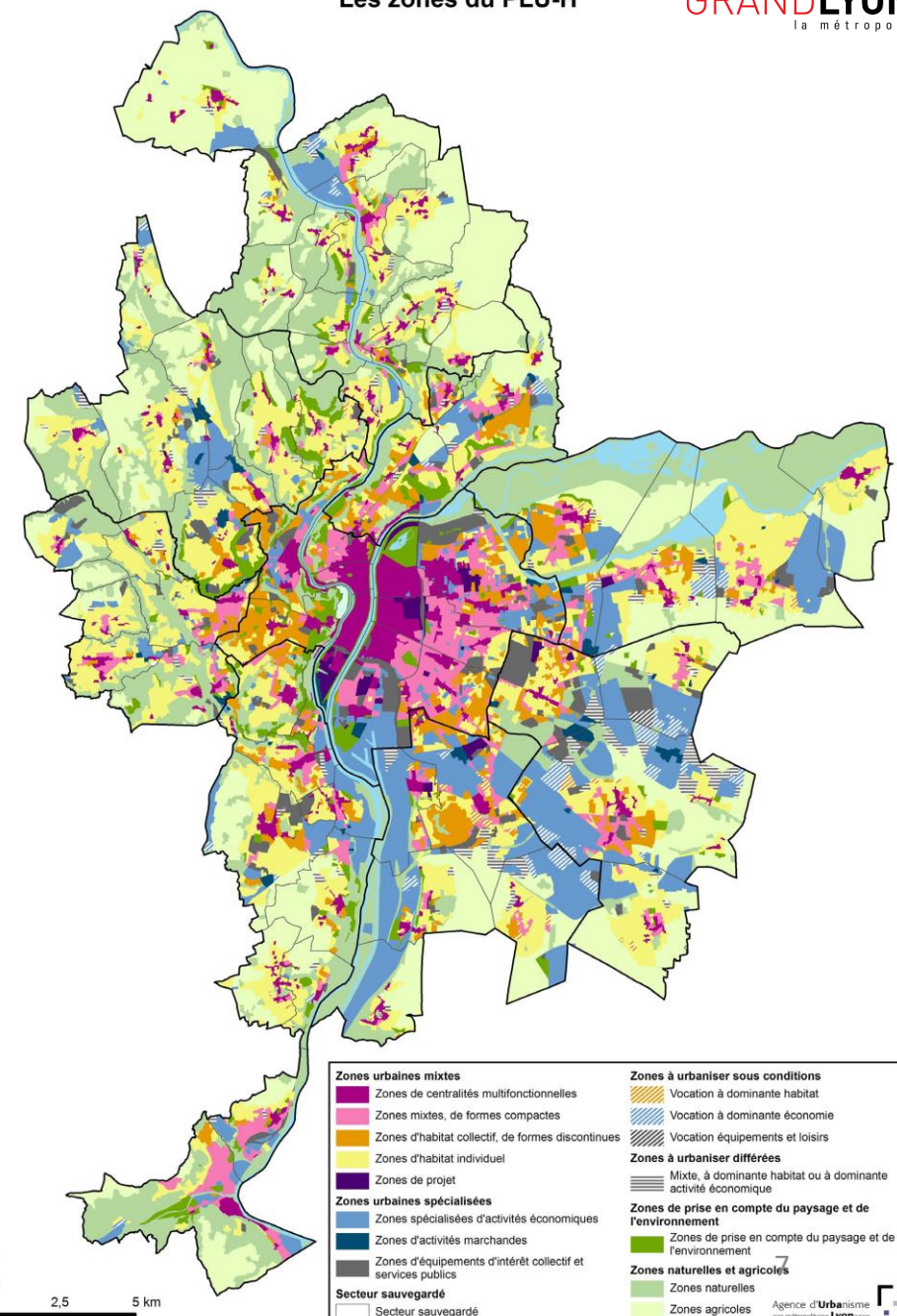
LES HAUTEURS D'ILOT

13 mètres	7 mètres	10 mètres
	16 mètres	19 mètres
	22 mètres	25 mètres
		>25 mètres

LES HAUTEURS DES POLYGONES D'IMPLANTATION

LES PERIMETRES REPORTES AU POS

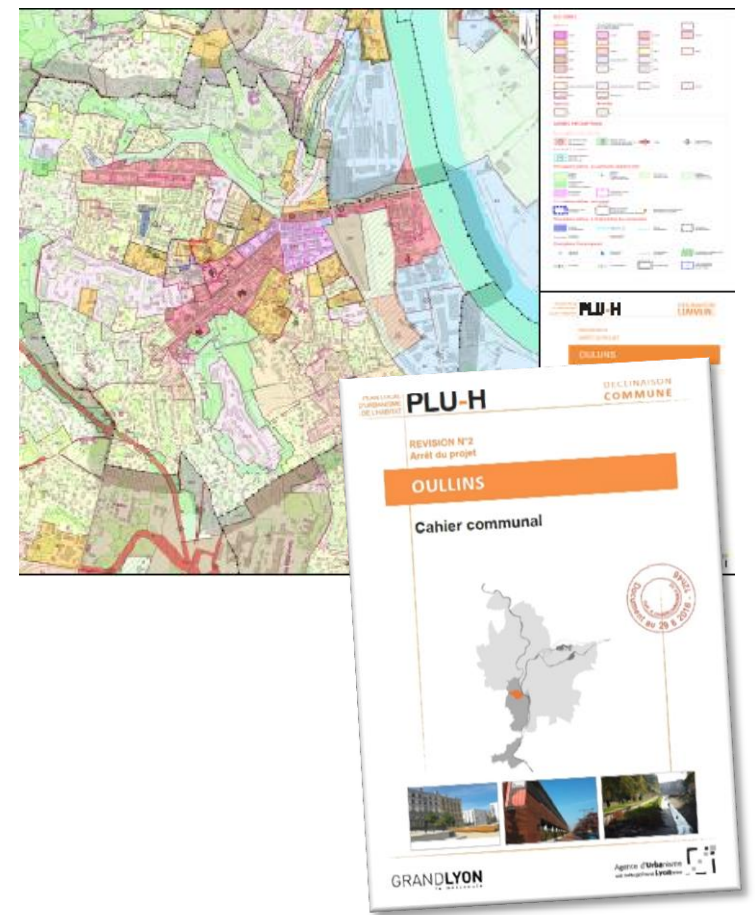
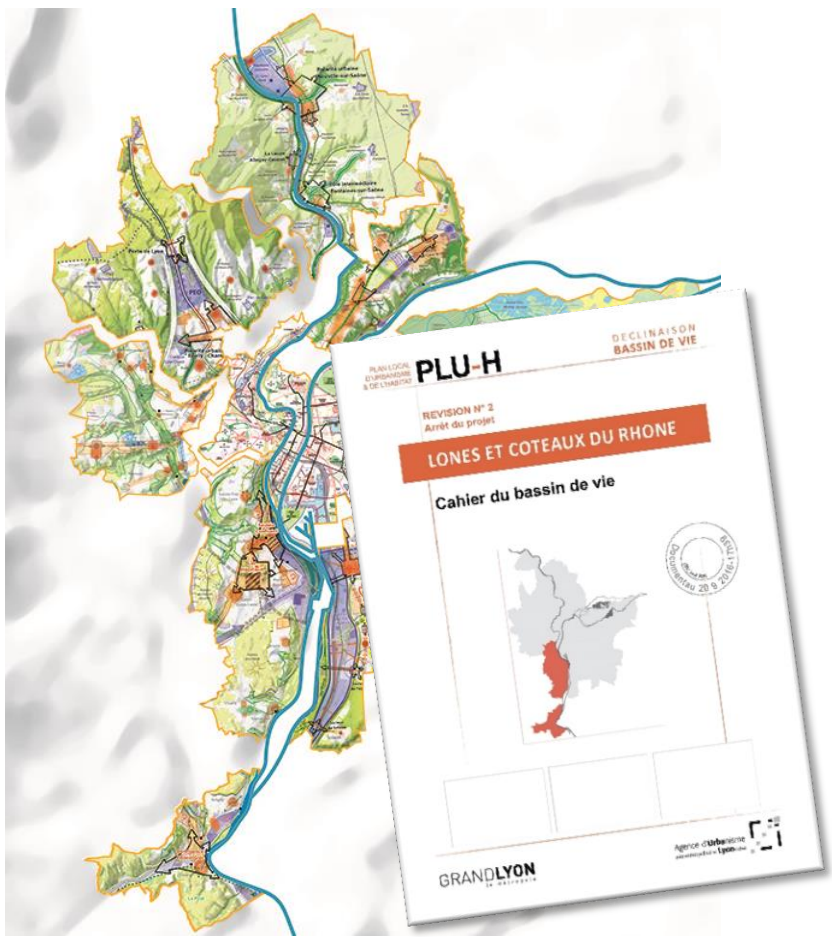
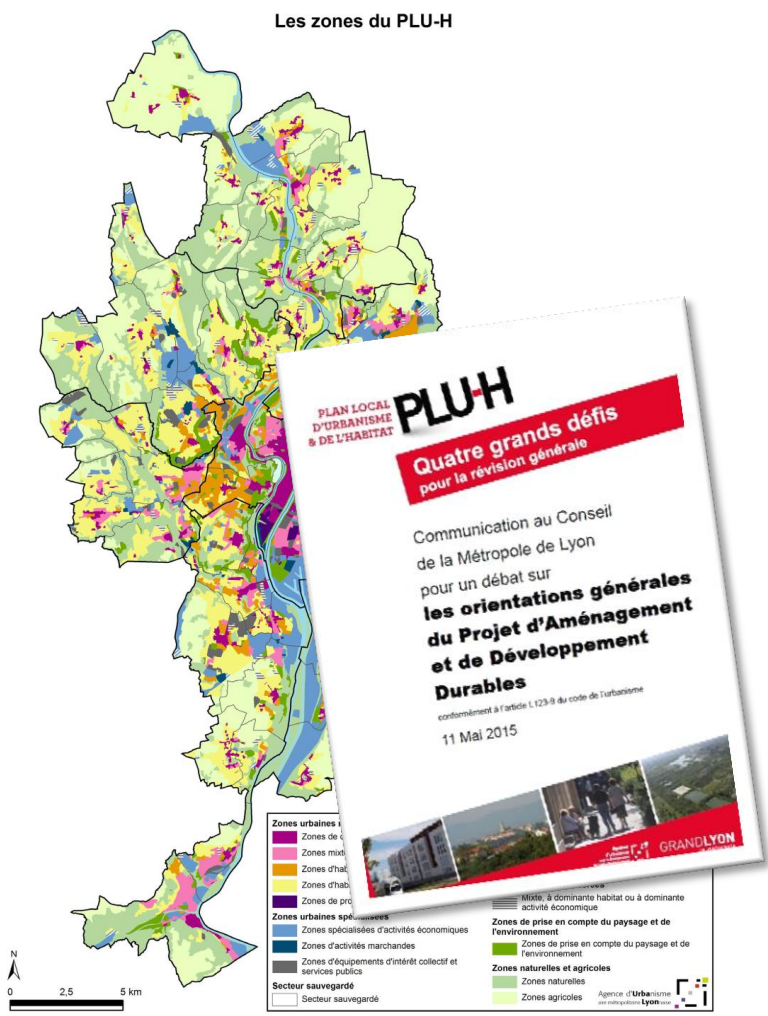
Les zones du PLU-H



Metropole's scale : sets the course, sets the rules of the community

9 local functional areas's scale : reveal inter-municipal strategic projects

Minicipality's scale : living environment and proximity



Metropolitan council
Metropolitan mayors conference

9 territorial conferences of mayors

A bi-lateral work with the communes

Success

conditions :

Calendar : 5 >>> 7 years

Cost : 12 M€ >>> 200 000 € per municipalities

A continuous consultation « on all floors » :

- The Metropole de Lyon
- 9 local functional area « Pool of life »
- 59 municipalities
- Inhabitants
- promoter of construction & social landlords



