

perspective
.brussels

OSLO REGION

Webinar
18.11.2020

Alfredo CORBALAN

Manager EU and international Affairs

Bureau bruxellois de la planification / Brussels Planningsbureau

www.perspective.brussels

COVID-19
TERRITORIAL CHALLENGES
in
BRUSSELS-CAPITAL REGION

Perspective.brussels

Regional public agency

Created in 2016

Multidisciplinary centre of
expertise

understanding
inspiring
acting



BRUSSELS in FIGURES

Population

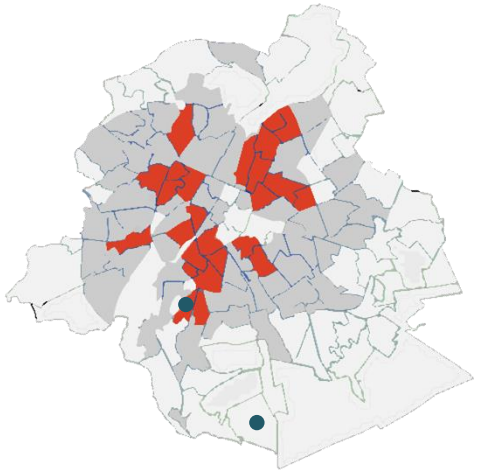


1 565 464 inhabitants



1 205 464 inhabitants

Disparity



37 823 inh/km² (Bosnie quarter)



1 277 inh/ km² (Vivier d'Oie quarter)

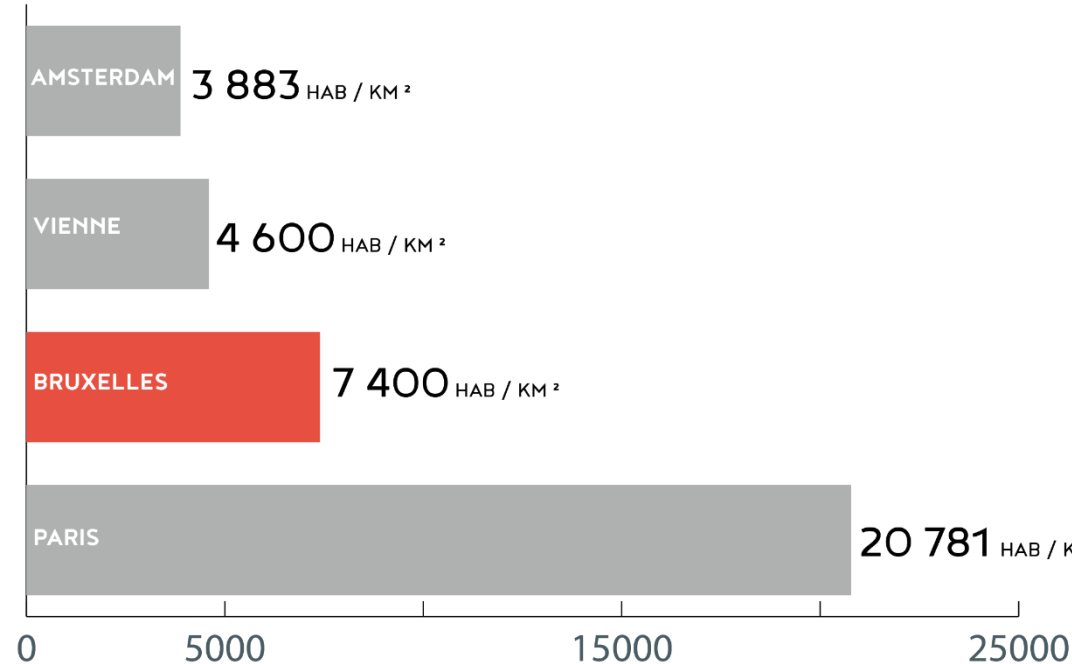


Sources: IBSA, STATBEL, Bruxelles.environment , Bruxelles.mobilite, Statistik.wien.at , INSEE, CBS



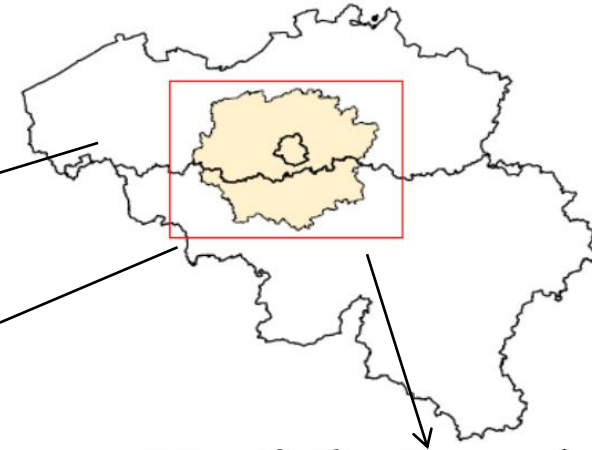
La North Western Metropolitan Area

Source: European Environmental Agency, Corine Land Cover 2000



A metropolitan area wider

- Between 2,5 and 2,9 million inhabitants
- Spread in the other 2 Regions



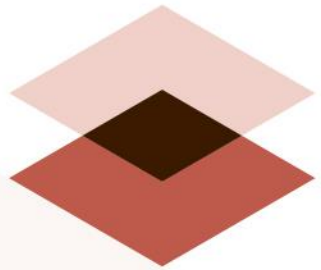
Functional Urban area
2,6m inhabitants



Metropolitan Community area
2,5m inhabitants



Railway Express Network area
2,9m inhabitants



perspective
.brussels 

1– IMPACTS OF COVID-19

2 – TERRITORIAL CHALLENGES
& FIRST ACTIONS

DIAGNOSIS

FRAMEWORK

Preparation regional recovery plan (short & long terms)

First diagnosis made in 10 days (7-18 May)

REGIONAL PARTNERS INVOLVED

En collaboration avec l'Observatoire de la Santé et du Social
rue Belliard 71, boîte 1 – 1040 Bruxelles



Et avec view.brussels
Avenue de l'Astronomie, 14 - 1210 Saint-Josse-Ten-Noode



Avec l'aide de:



DIAGNOSTIC

Redéploiement socio-économique, territorial et environnemental suite à la crise du COVID-19

18 MAI 2020

HEALTH & SOCIAL

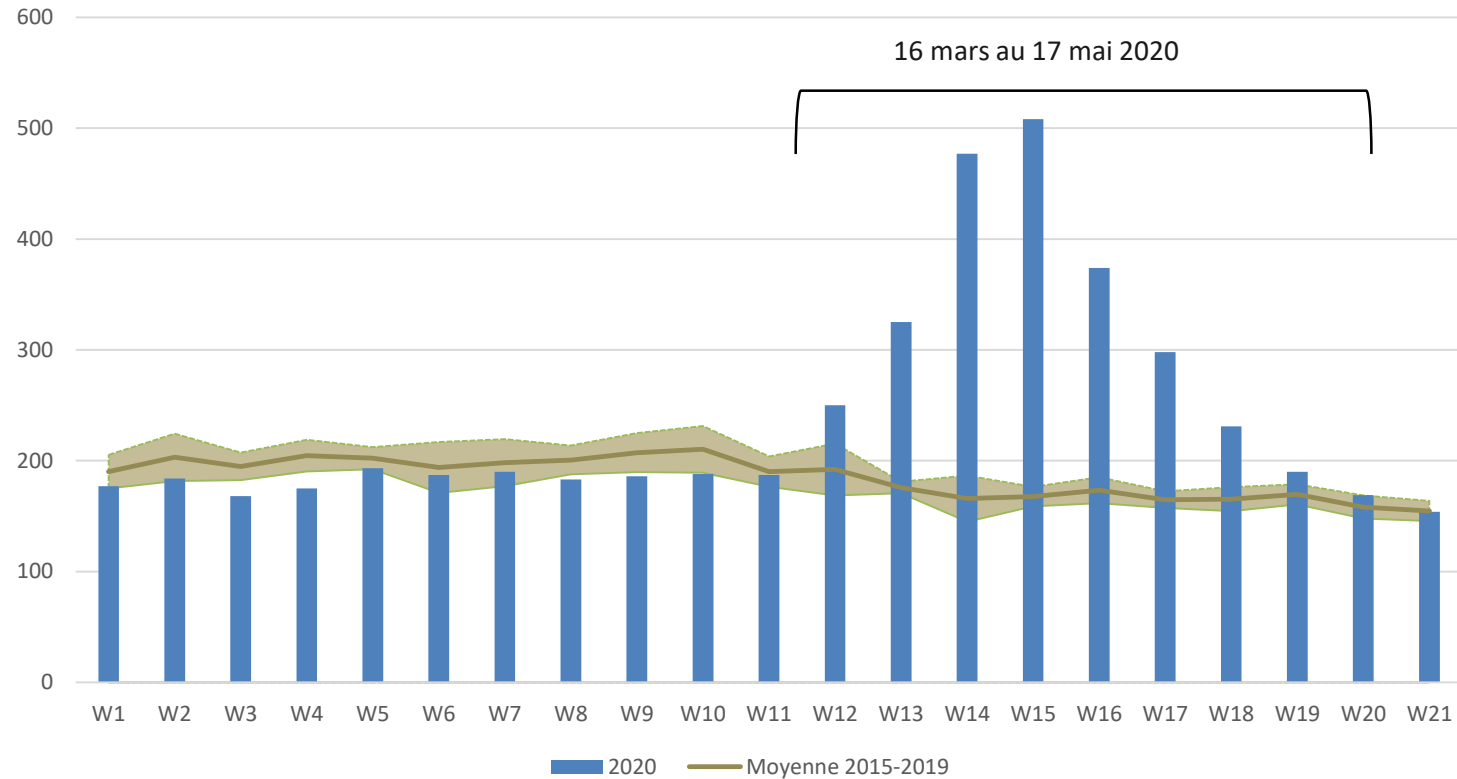
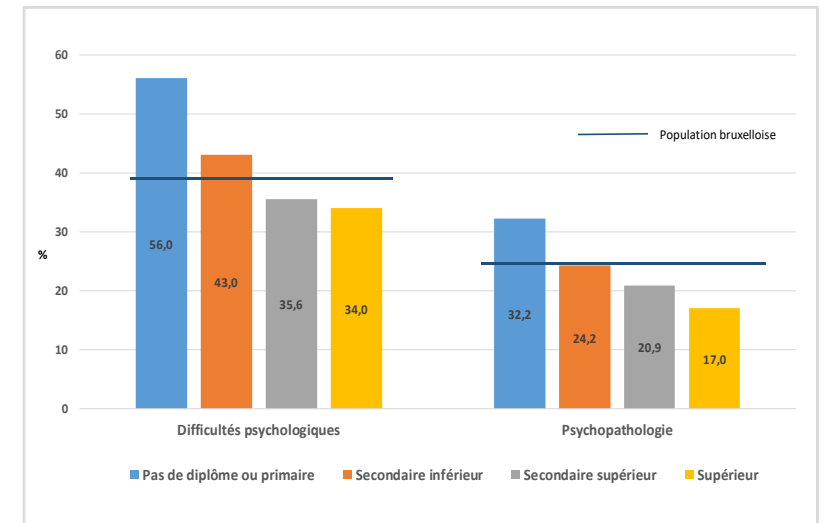
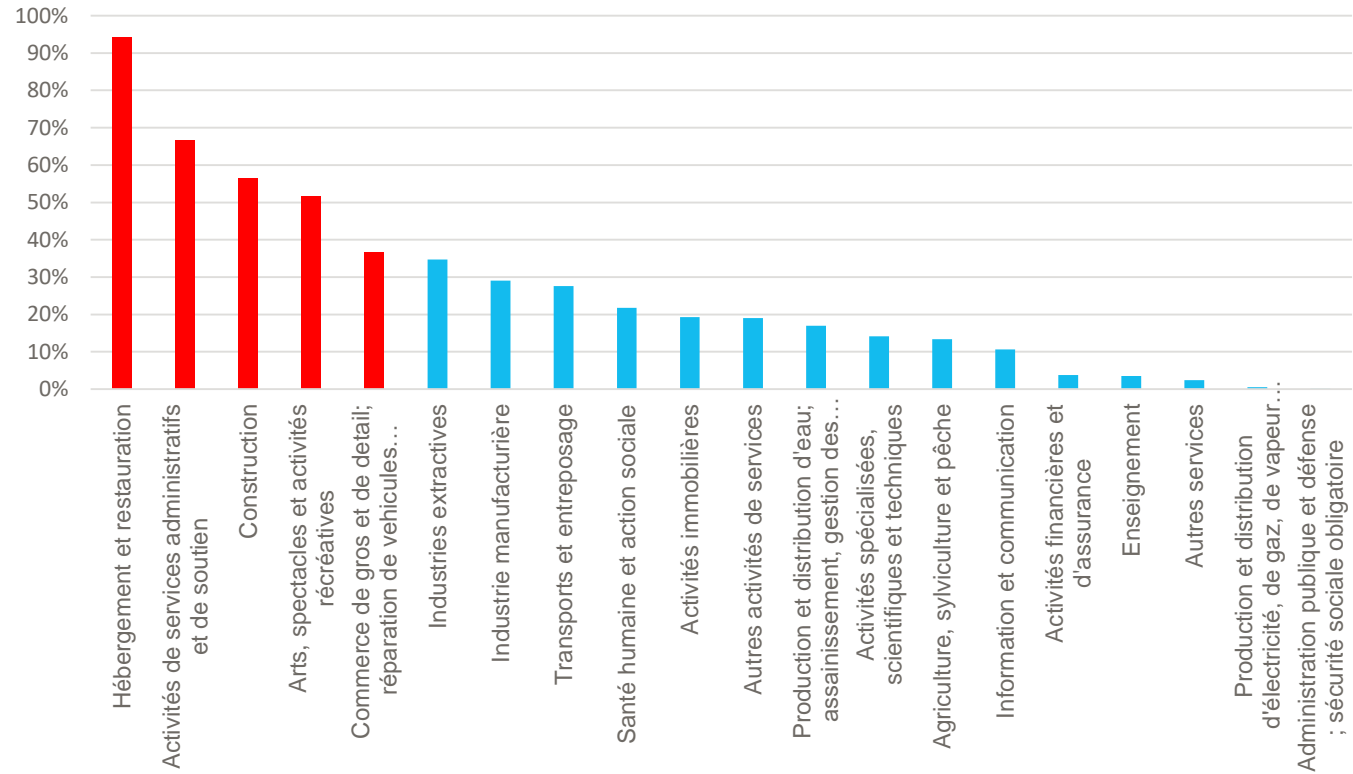


CHART: NUMBER OF DEATHS FROM ALL CAUSES PER WEEK IN 2020 COMPARED TO THE AVERAGE FOR 2015 TO 2019 IN RBC

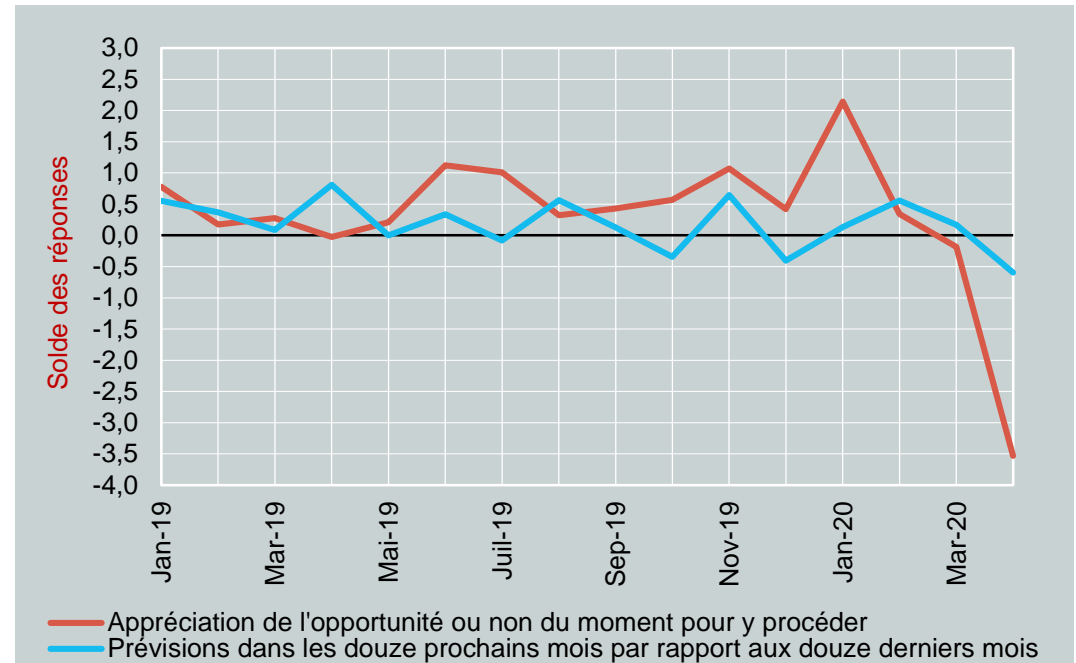


GRAPH 15: PERCENTAGE OF THE POPULATION (15 YEARS AND OVER) WITH PSYCHOLOGICAL DIFFICULTIES (GHQ SCORE ≥ 2), OR PSYCHOPATHOLOGY (GHQ SCORE ≥ 4), BY LEVEL OF EDUCATION* (STANDARDISED FIGURES**), BRUSSELS REGION, 201

ECONOMY & EMPLOYMENT



GRAPH: SHARE OF DECLARATIONS OF TEMPORARY UNEMPLOYMENT IN WAGE EMPLOYMENT IN BRUSSELS (BY RESIDENCE) ON 31 MARCH 2020 (PER SECTOR)



GRAPH: MAJOR PURCHASES BY BRUSSELS CONSUMERS

ENVIRONNEMENT

	Part dans total des émissions de GES en 2018*	Évolution suite au confinement (à climat constant)
Chauffage des bâtiments	54%	-25%
Transport routier	27%	-50%
Autres sources d'émissions	19%	0%
TOTAL GES	100%	-27%

TABLE 5: ESTIMATED OVERALL IMPACT ON DIRECT GHG EMISSIONS IN RBC.

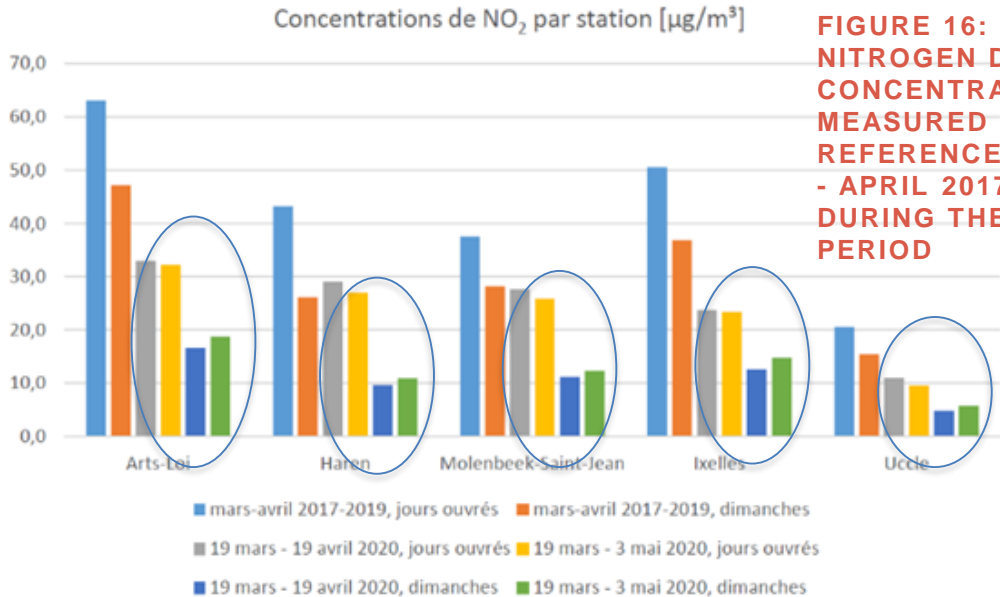
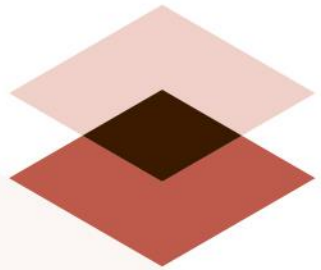


FIGURE 16: AVERAGE NITROGEN DIOXIDE (NO₂) CONCENTRATIONS MEASURED DURING THE REFERENCE PERIOD (MARCH - APRIL 2017-2019), AND DURING THE CONTAINMENT PERIOD



MAP 7: GREEN SPACES LEFT OPEN (IN GREEN) AND CLOSED (IN RED) DURING THE CONTAINMENT PERIOD



perspective
.brussels 

TERRITORIAL CHALLENGES & FIRST ACTIONS

GOVERNANCE

Cooperation federal level

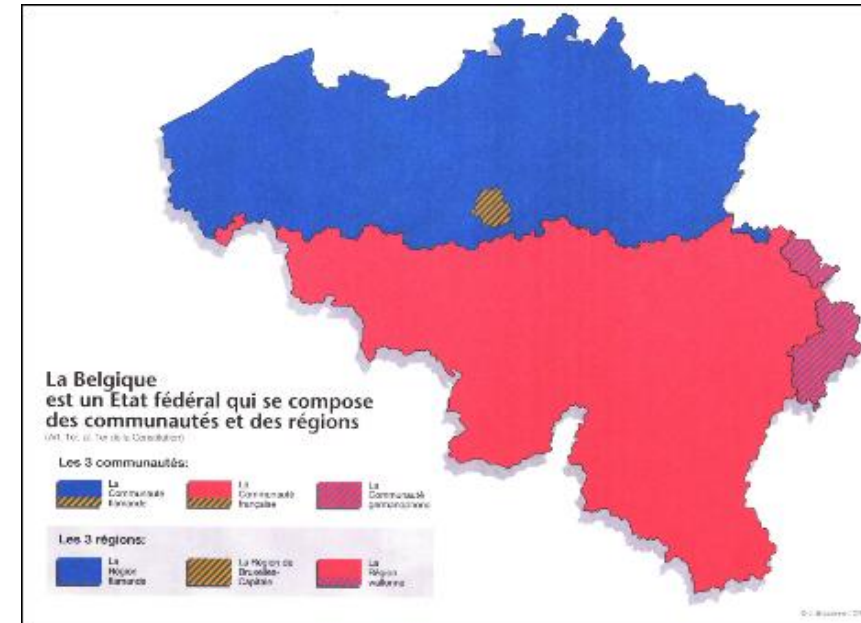
Brussels strongly involved in the national decision making process

Brussels will be involved in the National and European recovery plans

Cooperation metropolitan / interregional level

- Some cooperation: hospital, study OPEN Brussels..
- Non harmonisation: mask, closing of bars and restaurants...
- Some opposition: mobility...

→ Not a booster for deeper metropolitan cooperation....so far



MOBILITY

International edition

The Guardian

Search jobs Sign in Search

Wildlife Energy Pollution

on Sport Culture Lifestyle More

This article is more than 1 month old

Can coronavirus cure Brussels of its addiction to driving?

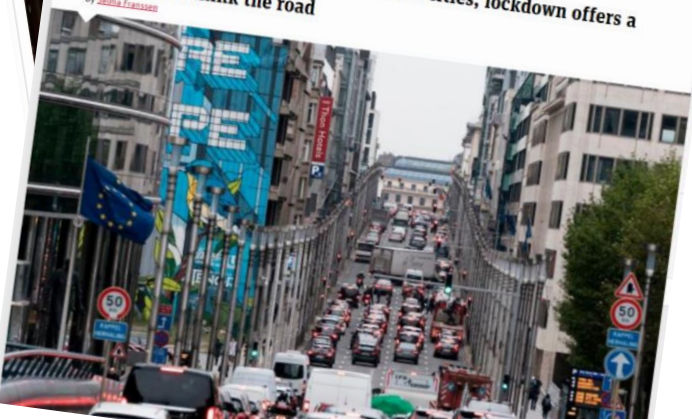


CityMetric

TRANSPORT BRUSSELS June 16, 2020

In one of Europe's most car-dependent cities, lockdown offers a chance to rethink the road

By Selma Ezanzen



POLITICO

Lockdown: Brussels in European top 3 for pro-cycling plans

Tuesday, 16 June 2020



Credit: ECF

Brussels ranks third in Europe in terms of measures announced to create cycling infrastructure during the coronavirus lockdown, according to an analysis by the European Cyclists' Federation (ECF).

Brussels rolls out 40km of cycle paths to ready lockdown phase-out

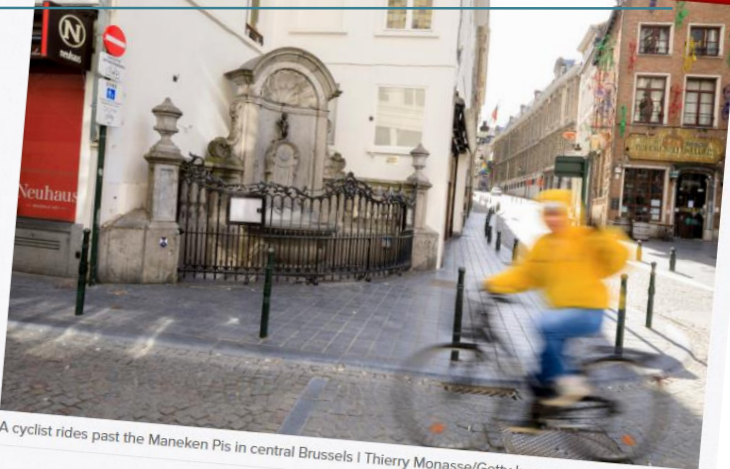


Wednesday, 29 April 2020

An additional 40 kilometres of cycling paths will be created in Brussels' regional territory to ease public transport flows as the country begins to progressively lift the coronavirus lockdown.

Facebook

Brussels gives pedestrians, cyclists priority across city



A cyclist rides past the Maneken Pis in central Brussels | Thierry Monasse/Getty Images

To aid social distancing, roads to be opened up from early May 'until further notice.'

Park + Bike



Credit: Brussels Mobility

The Park+Ride will also...

PUBLIC SPACE

Brussels on Vacation – Temporary occupation



News Temporary developments will be planned on the

Temporary improvements will be planned in the public space this summer

Brussels on vacation

Posted on June 8, 2020



© visit.brussels - Eric Danhier



The current health crisis highlights the need to better share public space and to reserve a substantial part of it for active modes in order to guarantee security and sufficient physical distance. With the coming summer vacation coming, the Brussels government has decided to support initiatives that will allow, in all districts, to broaden the recreational, cultural, events, commercial, hotel and sports offer for all Brussels residents.

To support this temporary transformation of public space, the "Brussels on vacation" intra-regional working group will be set up to ensure consistency and efficiency of execution. This working group will be steered by the cabinet of the Minister-President and will bring together the cabinets, administrations and municipalities concerned.

Perspective is responsible for identifying places, open or covered, public or private, temporarily available on the regional territory, for:

- install terraces, additional green spaces, meeting areas or play areas;
- allow small activities (equivalent to local equipment) and temporary use of public space.

This work is fully in line with the Perspective missions on collective equipment ([Task Force Equipment](#)) and on [temporary occupations](#) .

Find out more

- [Equipment Task Force](#)
- [Temporary occupation](#)

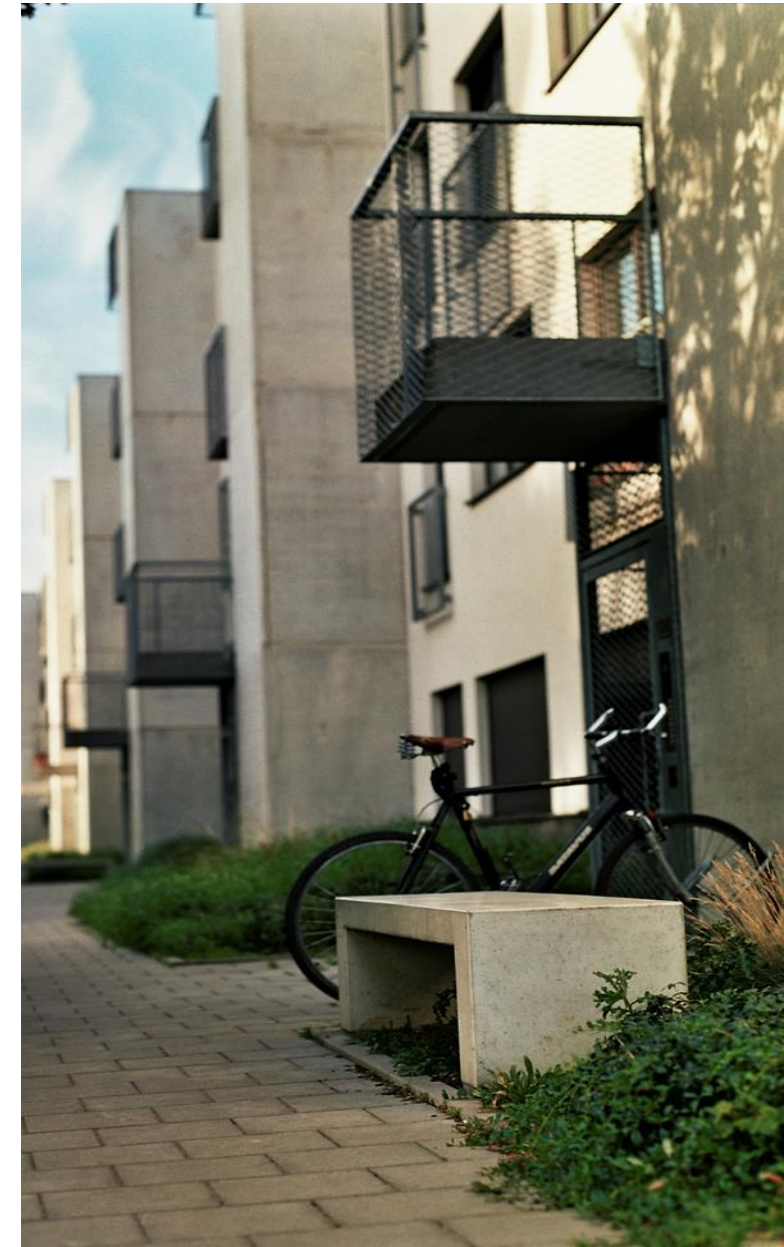
Residential areas



New scientific committee on housing



The screenshot shows the top of a news article on the L'Echo website. The navigation bar includes 'Accueil', 'Les Marchés', and 'Mon Argent'. Below the navigation bar, there are three small news snippets: 'KBC va proposer une intelligence artificielle pour conseiller ses clients', 'John Le Carré signe un "Retour de service" de haute volée', and 'À suivre ce lundi'. The main headline is 'Un comité scientifique pour repenser le logement à Bruxelles'. To the left of the main text is a vertical list of social media sharing options: TWITTER, FACEBOOK, WHATSAPP, LINKEDIN, E-MAIL, SAUVER, OFFRIR CET ARTICLE, and RÉAGIR. Below the headline is a photograph of two men standing on a balcony overlooking a cityscape. The caption below the photo reads: 'Benoît Moritz est l'architecte urbaniste qui préside le comité scientifique consacré au logement mis sur pied par Rudi Vervoort, ministre-président bruxellois.' Below the photo is the author information: 'PAULINE DEGLUME | 29 mai 2020 03:00'. At the bottom of the article, the text reads: 'Le ministre-président bruxellois Rudi Vervoort (PS) entend remettre l'accent sur l'accès au logement, la crise ayant mis en lumière les inégalités en la matière.'



Master class about qualitative urban density

-Security

Compliance with different standards . safety in public spaces, level of crime.

-Everyday comfort

« Walkable city » - accessibility for all categories of citizens to all types of public or shared spaces : green areas, roads, sport facilities, etc., mobility, space management, visual , accoustic, climatic comfort.

-Environment Ecology

Quantity of green spaces, quality of greening, air quality, quality and use of water ressources, energy efficiency of buildings.



-Social and Economical participation

Participation in the economic strengthening of the city, local job creation, Strengthening integration and social inclusion.

-Diversity Intensity

Services and jobs - social and demographic, spatial and formal, functional, cultural and spatial mix.

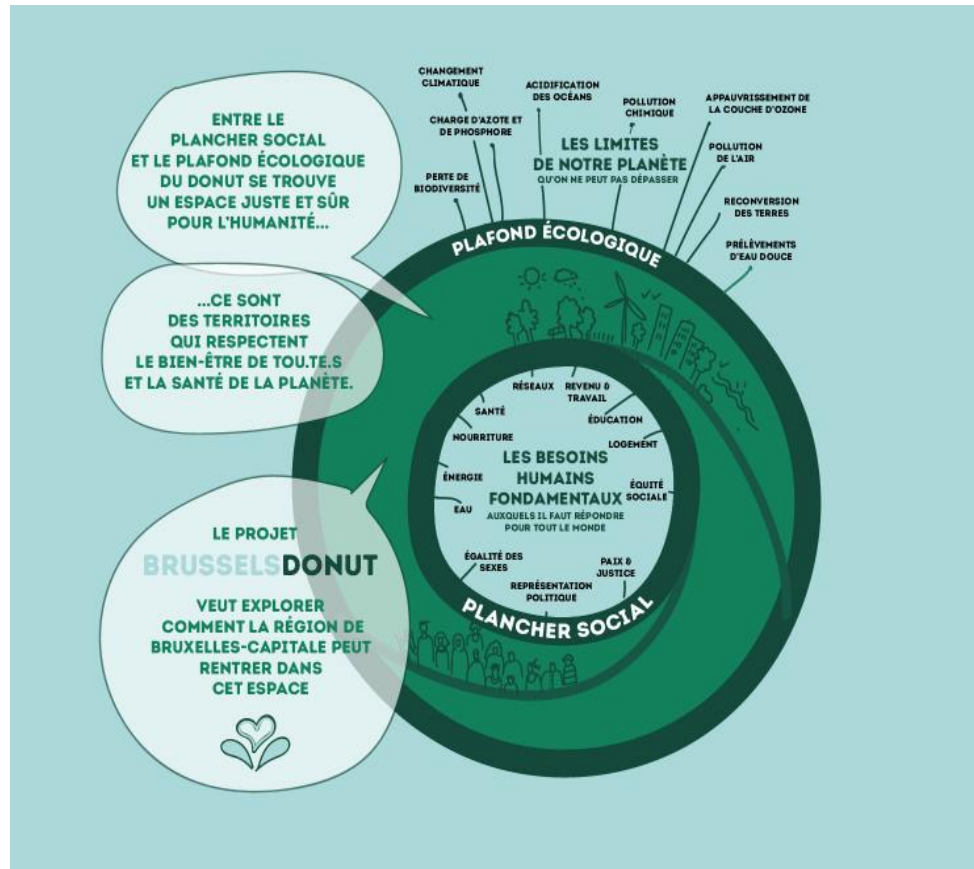
-Identity

Significant and recognizable aspects, the actions take into account the heritage, enhance the value of existing buildings and local users.



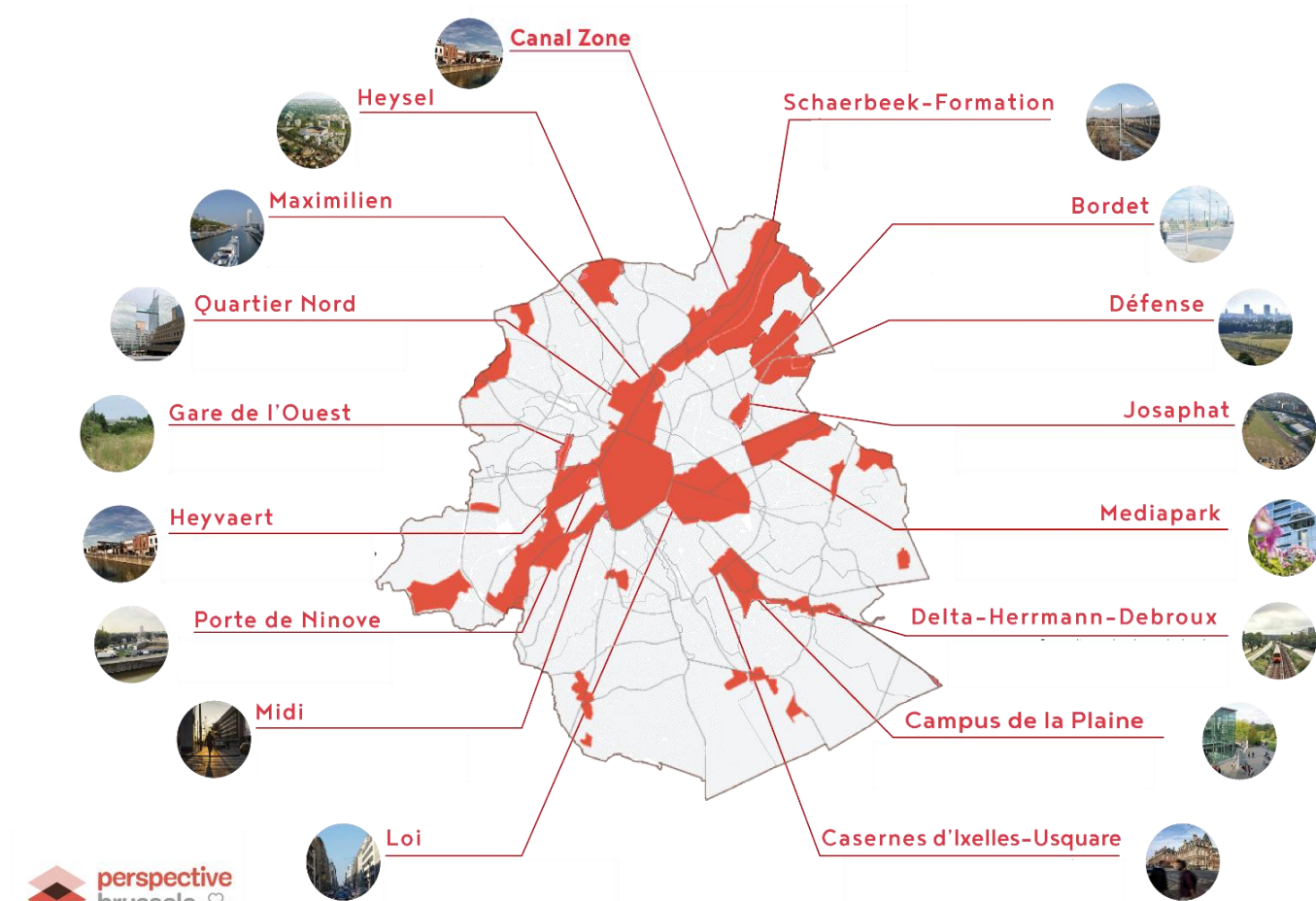
TRANSITIONS & RESILIENCE

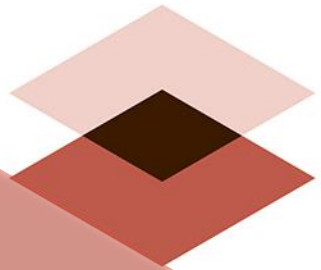
Brussels Donut



Source: www.donut.brussels

Brussels strategic areas





perspective
.brussels 

THANK YOU
for your attention

Contacts

info@perspective.brussels

+32 2 435 42 00

www.perspective.brussels

Bureau bruxellois de la planification / Brussels Planningsbureau