

Turin-Oslo

Metropolitan governance in Spatial and Strategic planning

making use of the ESPON SPIMA project through group exchange

24 ottobre 2019 - Sala Consiglieri, Via Maria Vittoria 12, Torino

A CASE OF COOPERATION AMONG
MUNICIPALITIES OUTSIDE THE CITY CENTER -
"ToP METRO" PROJECT

Paola Boggio Merlo
Città Metropolitana di Torino



“ToP METRO” PROJECT

- ToP Metro project of the Metropolitan City of Turin (CMT) consists of an interrelated and integrated set of **works and actions** with the aim of redevelop the suburbs and improve the security of the territory.
- The project is part of the development vision outlined by the **Metropolitan Strategic Plan** whose general objective is that of a "City of quality", intended as a cohesive, healthy, safe and pleasant place to live
- Top Metro project is also characterized by **the involvement of different levels of government of the territory (Region, Metropolitan City, Municipalities)** and the activation of important synergies between the different public policies of urban regeneration.

thanks to this collaboration the project was financed for 40 million € national funds

- the national **CALL** is approved.

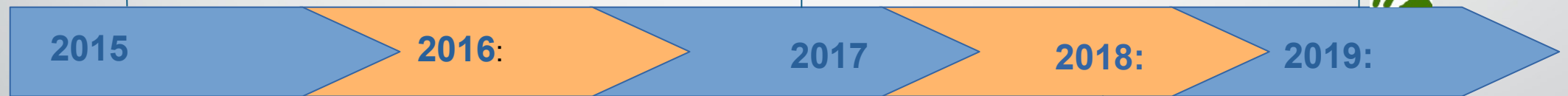
- the Metropolitan city of Turin nominates the project "**ToP metro**"

- the national resources **are not enough** to finance all the requests. ToP Metro must wait for other funds

- another national Law: more funds in order to guarantee the maximum financial coverage

- april 2018: **works begins**

- a national Law **suspends** all the agreements signed for political and economic reasons. Work continues, but there is a **climate of uncertainty** among operators. Many meetings between partners at all levels (local, regional, national)



a national law establishes the "**Extraordinary program of intervention for urban regeneration and security of the suburbs of metropolitan cities of provincial capitals**" and creates a **fund** to guarantee the funding



- ToP Metr is positively evaluated and for the project is allocated a budget of **39.6 million €**

- in December the **agreement** between the Metropolitan city of Torino and the Presidency of the Council of Ministers is signed



the 1st january the Budget national Law **reactivate** the agreements and the the program starts again

OBJECT OF THE “NATIONAL CALL”

the projects admitted to financing must:

- concern the suburbs, or "**urban areas with situations of economic and social marginalization, building degradation and lack of services**"
- **categories:**
 - a) improve the urban quality;
 - b) maintenance, reuse e Refunctioning of public areas and of existing buildings, for public interest
 - c) increasing territorial security and urban resilience capacity;
 - d) increasing the performance and the services in urban scale including social inclusion and the creation of new metropolitan and urban welfare models;
 - e) sustainable mobility e infrastructure modernization for social, cultural, educational and didactics services

The **maximum amount** that can be financed for metropolitan cities is **40 million €**

ToP METRO PROJECT

- the City of Turin (capital) has decided to participate to the Call with its own autonomous proposal ("AxTO") which concerns specific projects relating to the municipal territory
- the Metropolitan City becomes spokesman and leader of an **autonomous proposal**, with projects that interest the **other** Municipalities included in the metropolitan perimeter, **plus other transversal projects** (Regione Piemonte).



The proposals presented by CmTo do not compete but complement the one presented by the City of Turin

THE ROLE OF CMT0 as the law says



- **Coordinate** its activity with the activities of the municipalities
- **encourage the participation of citizens** and local authorities to the choices community policies;
- improve **life quality, sustainable development, employment**, protection and enhancement of the environment and natural resources e
- landscape, **sustainable mobility**
- **equilibrium and territorial decentralization** in the distribution of resources, services, as well as territories marginal compared to the urban area centers;

Step 1: PRELIMINARY ANALYSIS

urban areas with situations of economic and social marginalization, building degradation and lack of services

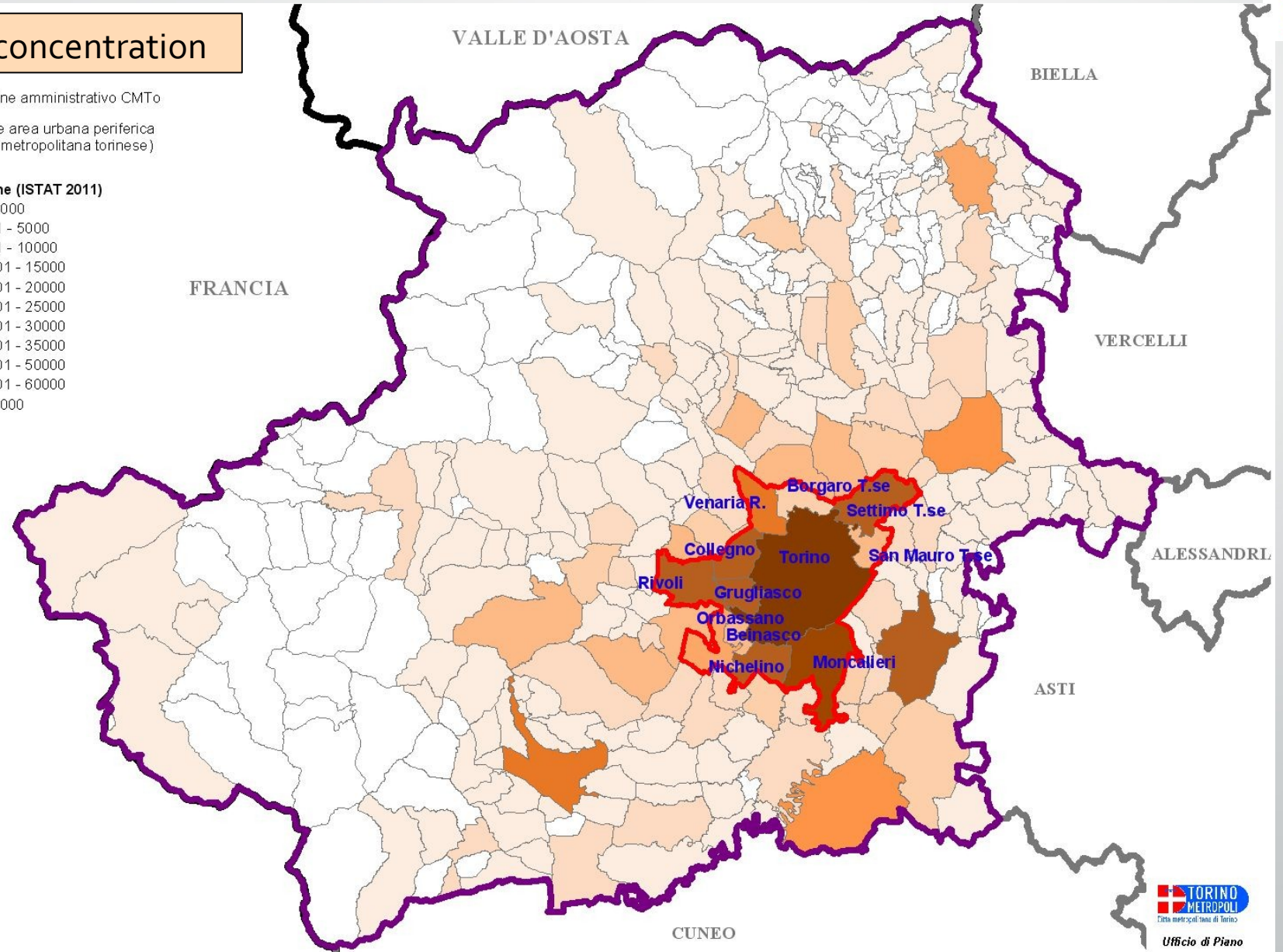
Inhabitants concentration

- Confine amministrativo CMTto
- Limite area urbana periferica (Area metropolitana torinese)

Popolazione (ISTAT 2011)

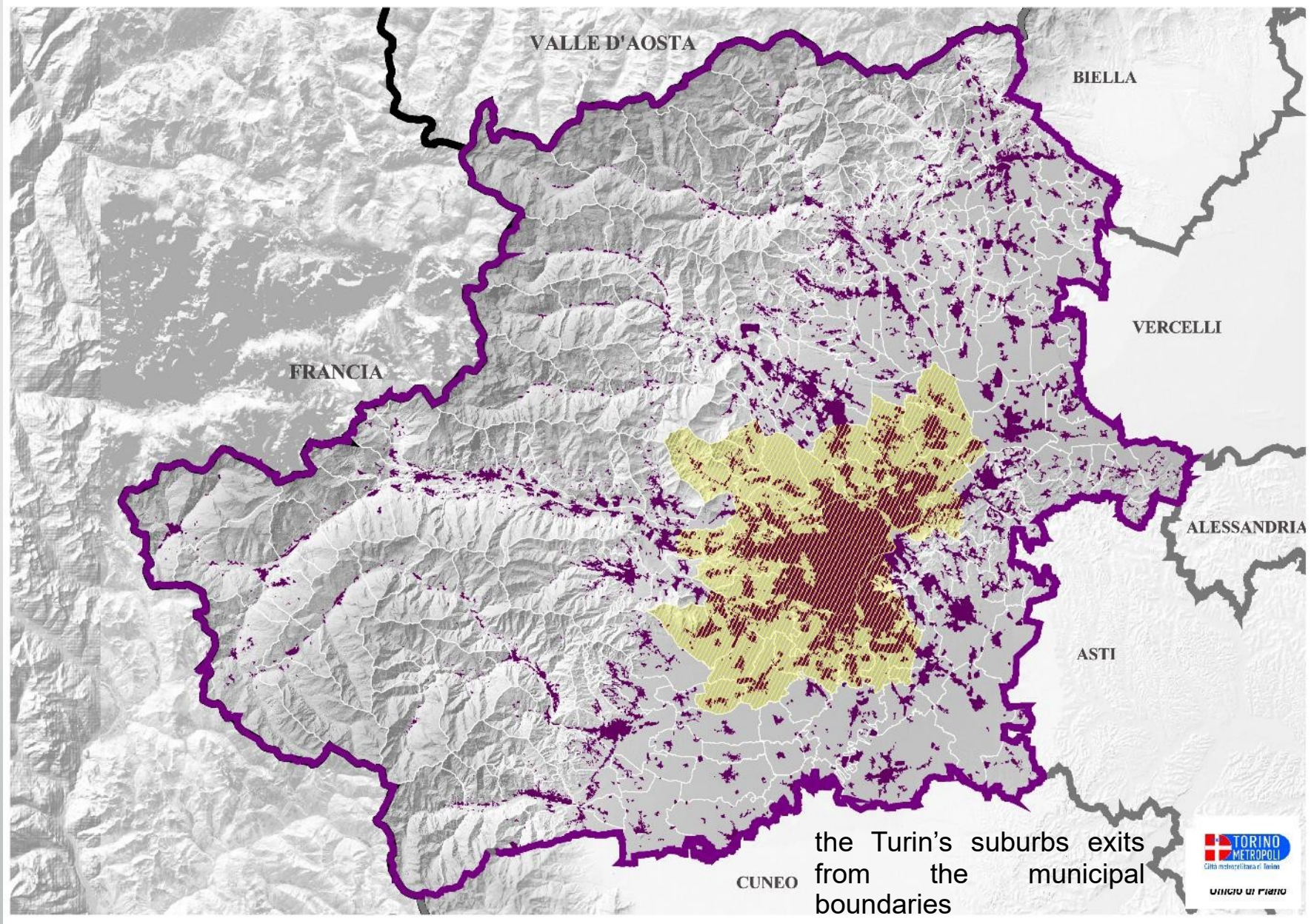
- <=1.000
- 1001 - 5000
- 5001 - 10000
- 10001 - 15000
- 15001 - 20000
- 20001 - 25000
- 25001 - 30000
- 30001 - 35000
- 35001 - 50000
- 50001 - 60000
- > 60000

A high population density allows interventions of greater impact;



the greatest concentration takes place near the Turin capital

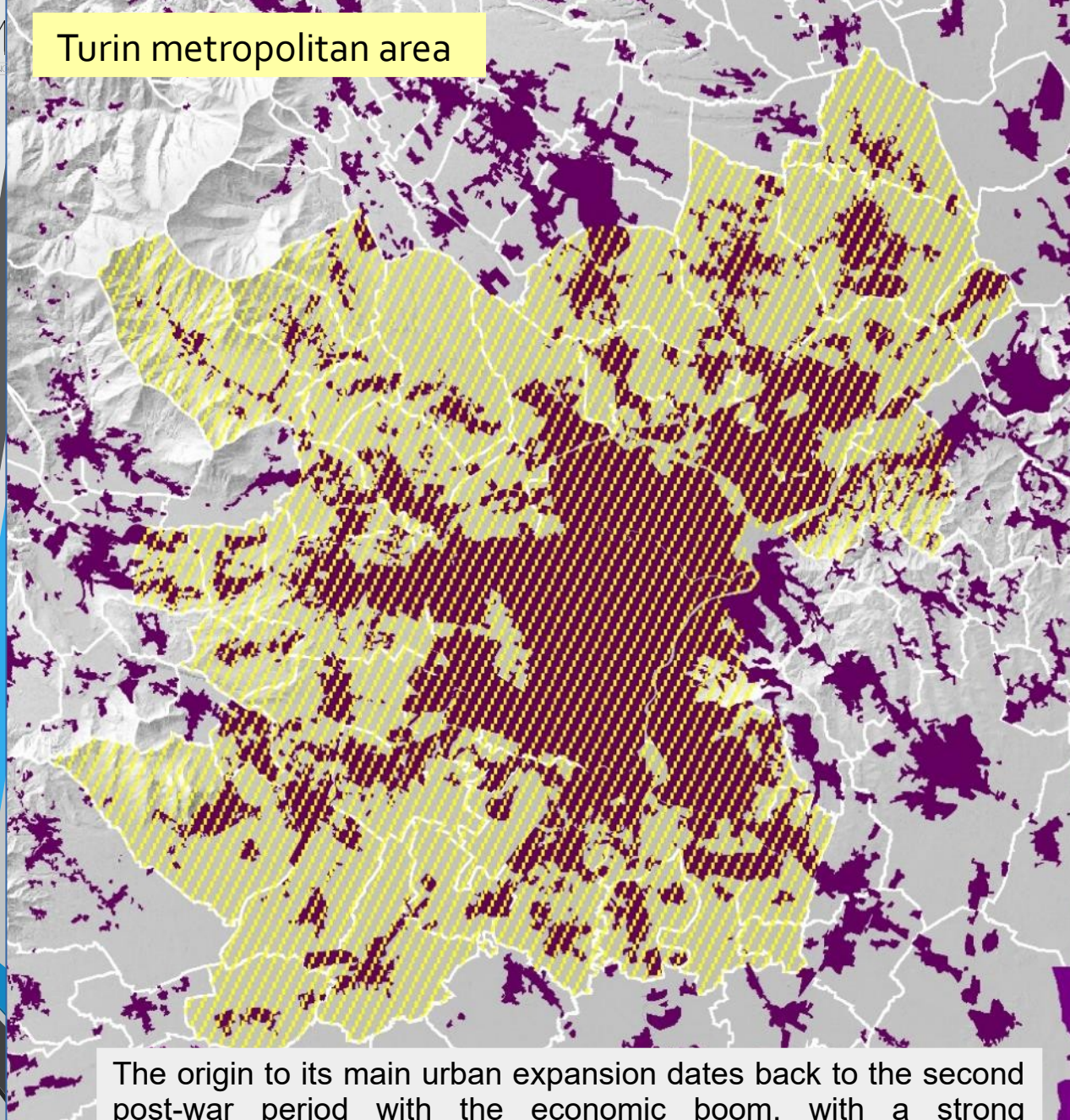
concentration of the built-up areas - Turin metropolitan area



the Turin's suburbs exits from the municipal boundaries

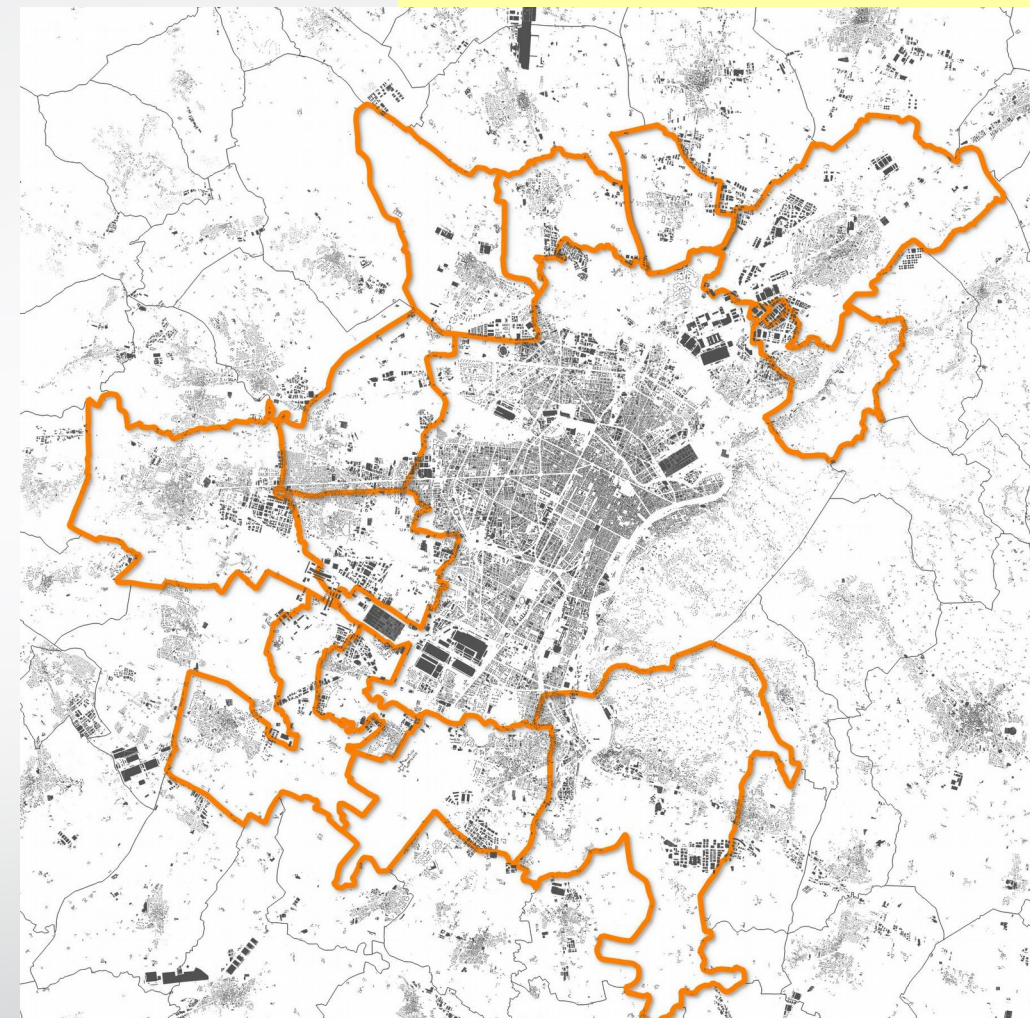


Turin metropolitan area



The origin to its main urban expansion dates back to the second post-war period with the economic boom, with a strong demographic increase, **not supported by adequate planning and infrastructure system.**

11 more involved municipalities



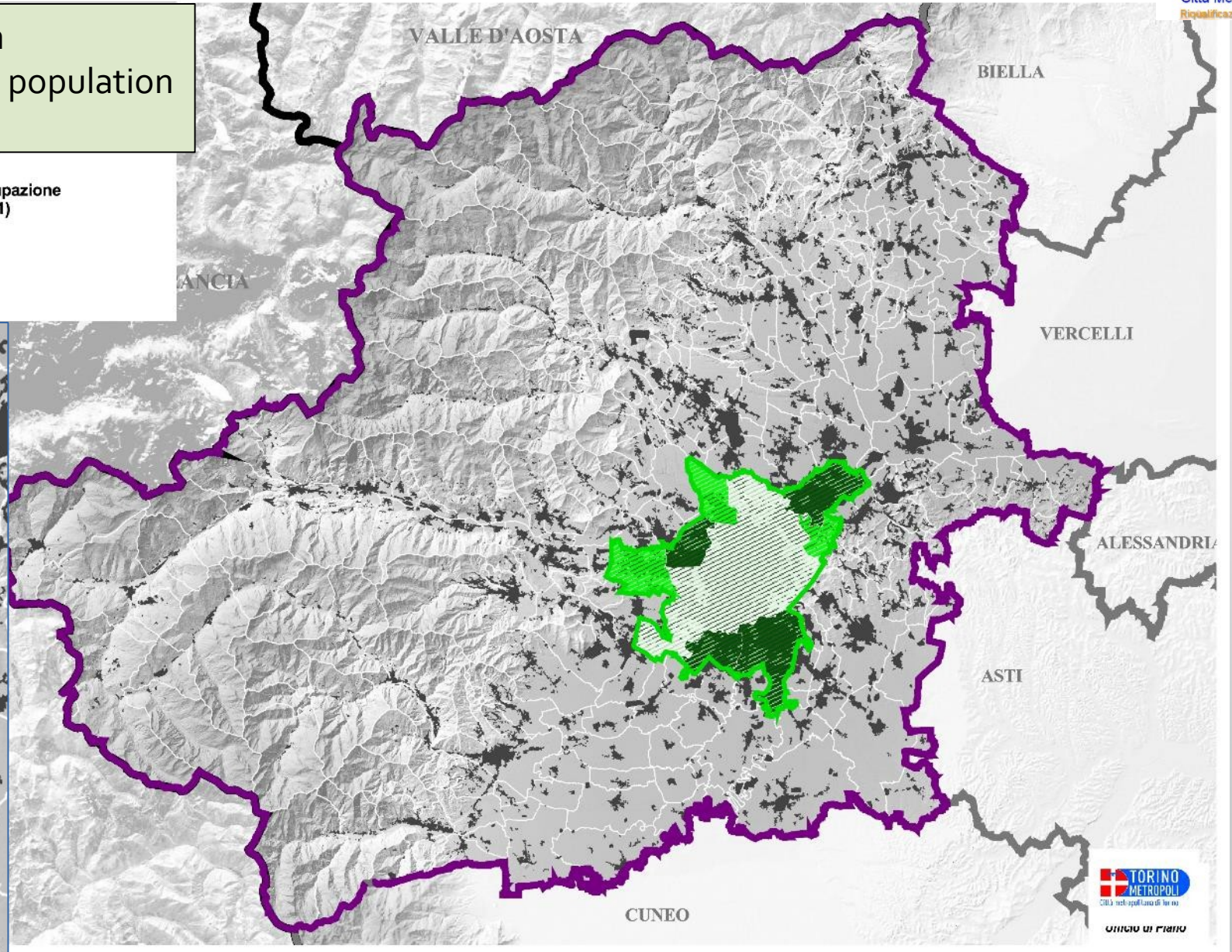
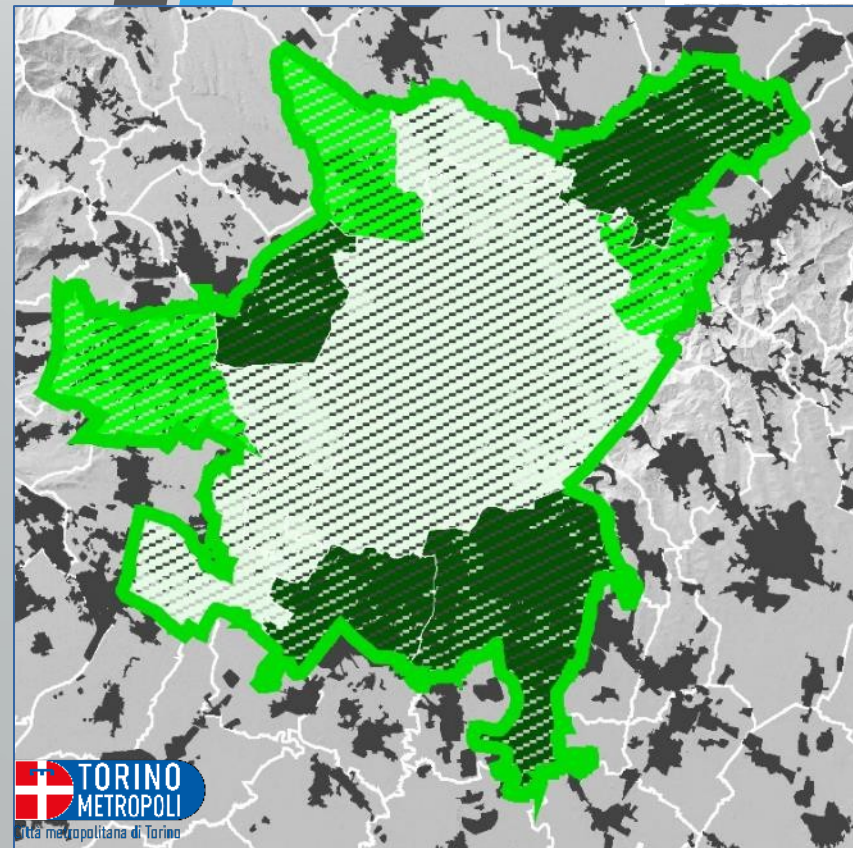
we restricted the observation to 11 of these 14 municipalities, because they have realities and situations very similar to the capital city.

- > 10.000 inhab.
- with Turin, 56 % of CmTo residents (area 5 % of the total CMT0)
- similar situation of economic and social marginalization, building degradation and lack of services

youth unemployment in municipalities with high population density

Tasso disoccupazione giovanile (2011)

- 32 - 33
- 34 - 35
- 36 - 37



soil consumption

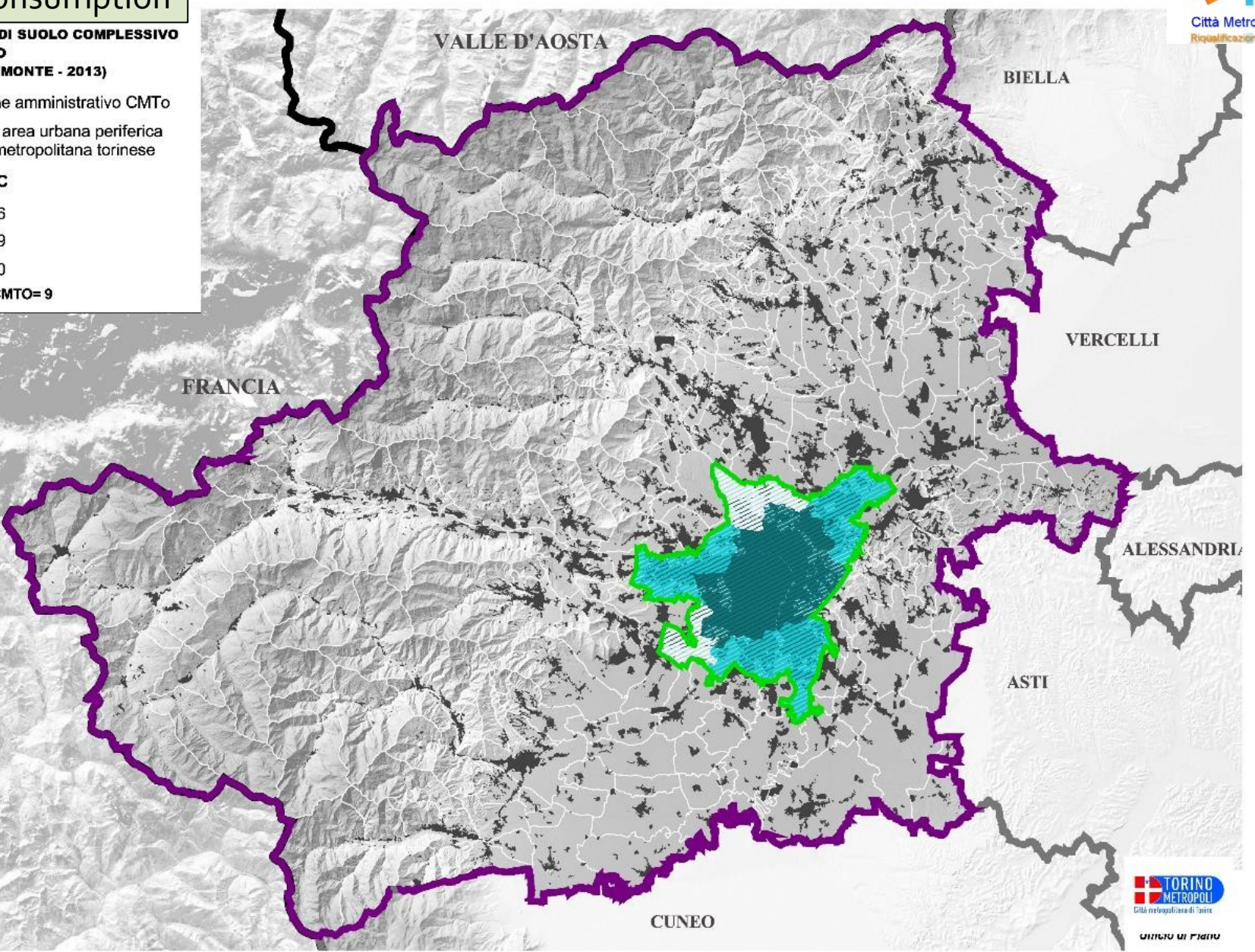
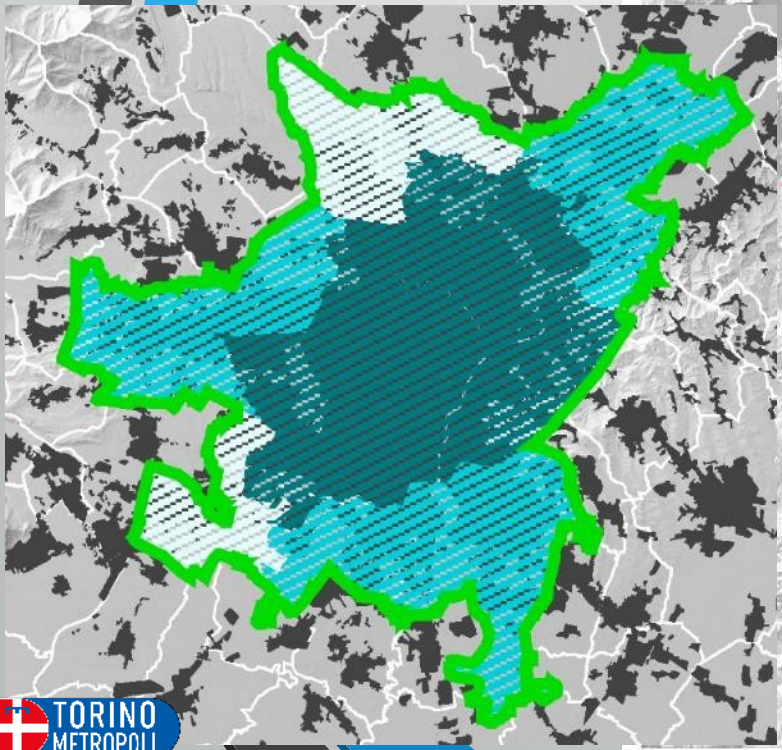
% CONSUMO DI SUOLO COMPLESSIVO SU SUP. CMTO (REGIONE PIEMONTE - 2013)

- Confine amministrativo CMTo
- Limite area urbana periferica Area metropolitana torinese

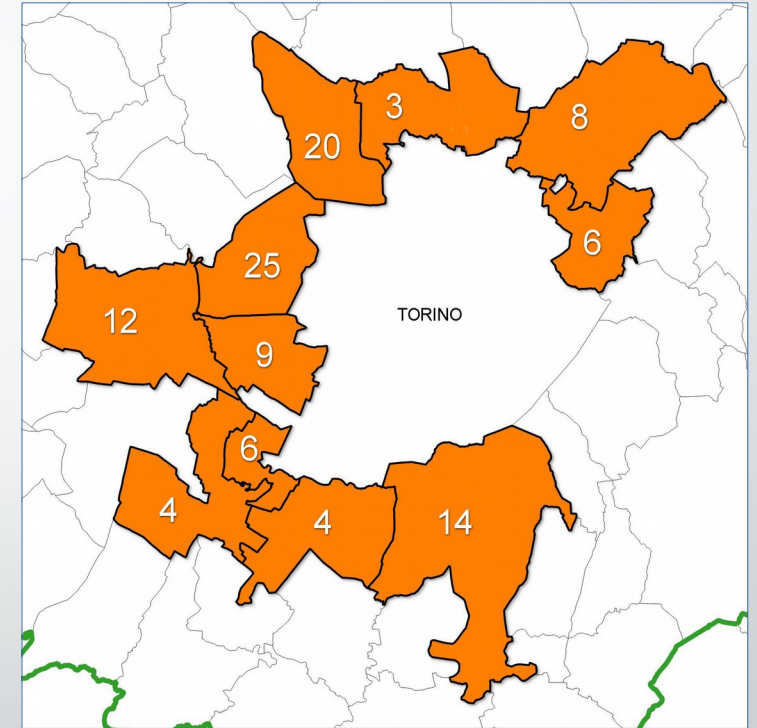
INDICE CSC

- 23 - 26
- 27 - 39
- 40 - 60

N.B. MEDIA CMTO=9



STEP 2: meetings with municipalities and local authorities for a single project proposal



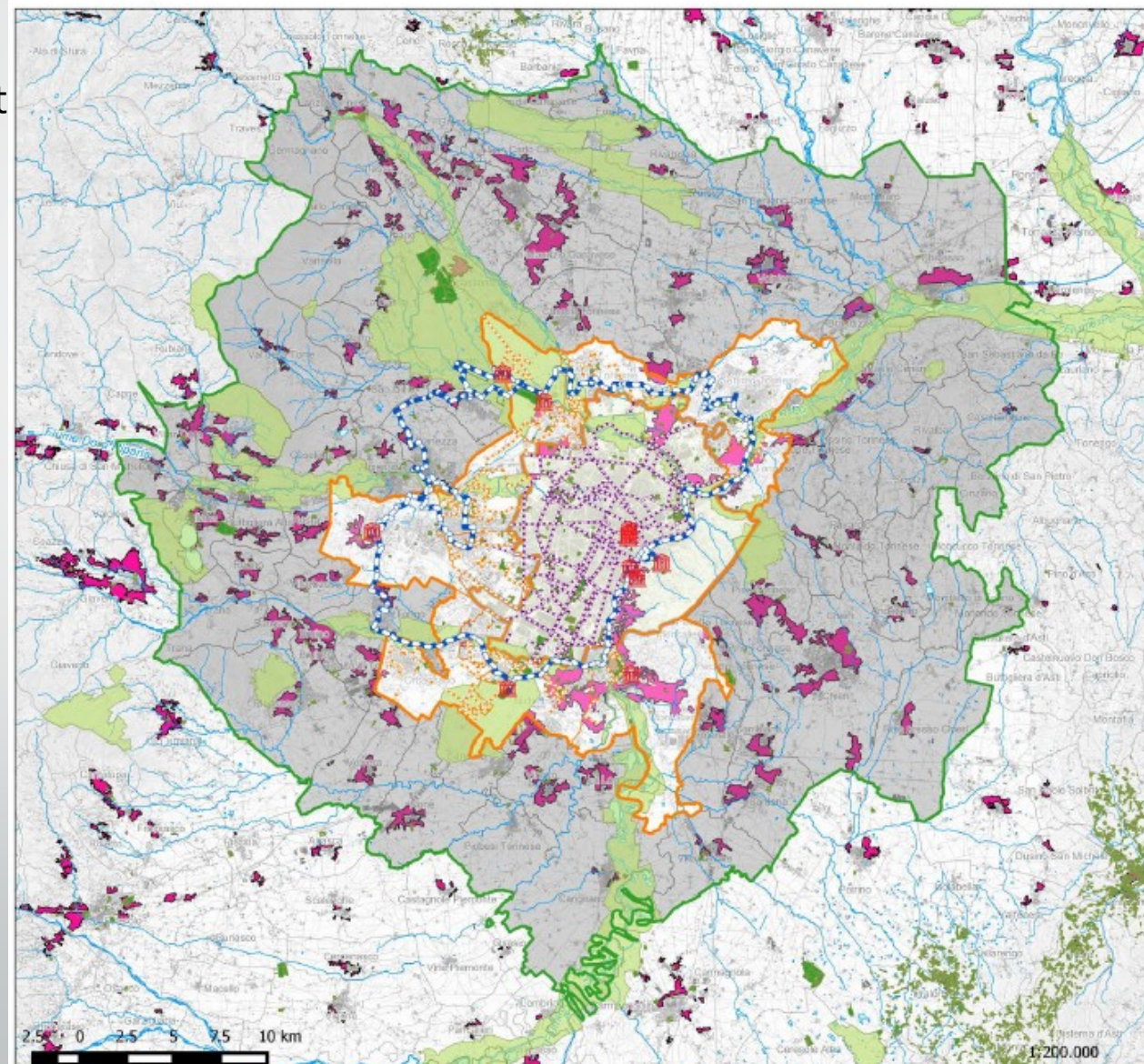
After many meetings, **June 27, 2016** the Mayors of the 11 Municipalities express their consent to **operate in a coordinated way** in the project coordinated by the metropolitan city of turin for safety and urban regeneration.

STEP 2: meetings with other partners: Piedmont Region

"Corona verde", the Piedmont region project that involves 93 municipalities, joins the project

The objectives are:

- a more balanced relationship between city and nature
- contain the soil consumption
- promoting interventions that, in addition to the redevelopment, come to reconstruct the image and identity values of the territory



DPCM 25 Maggio 2016
Approvazione del bando con il quale sono definiti le modalità e la procedura di presentazione dei progetti per la riqualificazione urbana e la sicurezza delle periferie delle città metropolitane, dei comuni capoluogo di provincia e della città di Aosta.

CORONA VERDE: L'INFRASTRUTTURA VERDE PER RIQUALIFICAZIONE E RICUCITURA SOSTENIBILE DELLE PERIFERIE

CITTÀ METROPOLITANA / REGIONE PIEMONTE



Allegato b alla Scheda/Relazione generale
INQUADRAMENTO TERRITORIALE

Legenda

- Aree Protette e Siti della Rete Ecologica
- Verde Urbano
- Morfologie tessuti discontinui suburbani (PPR)
- Residenze Sabaude
- Corona di Delizie in Bicicletta
- Diretrici Bicilpane Comuni di Torino
- Rete ciclabile Comuni oggetto Bando
- Confini amm.vi Corona Verde
- Confini amm.vi Comuni oggetto Bando



STEP 2: meetings

Not only works ... innovation, investments, employment

*Top Edge
Mip al ToP
Fa bene*



5 transversal initiatives implemented directly by the Metropolitan City of Turin to:

- **support innovation,**
- support small companies
- **attracting investments,** particularly in the manufacturing sector
- **increase employment,** especially in the municipalities where the youth unemployment rate is higher than the regional average

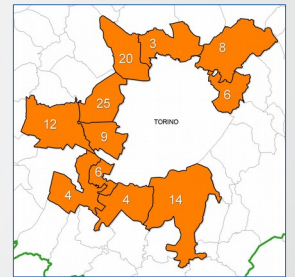
STEP 3: the project

Cmto candidate the project.

The result is a transversal projects that affect the entire territory.

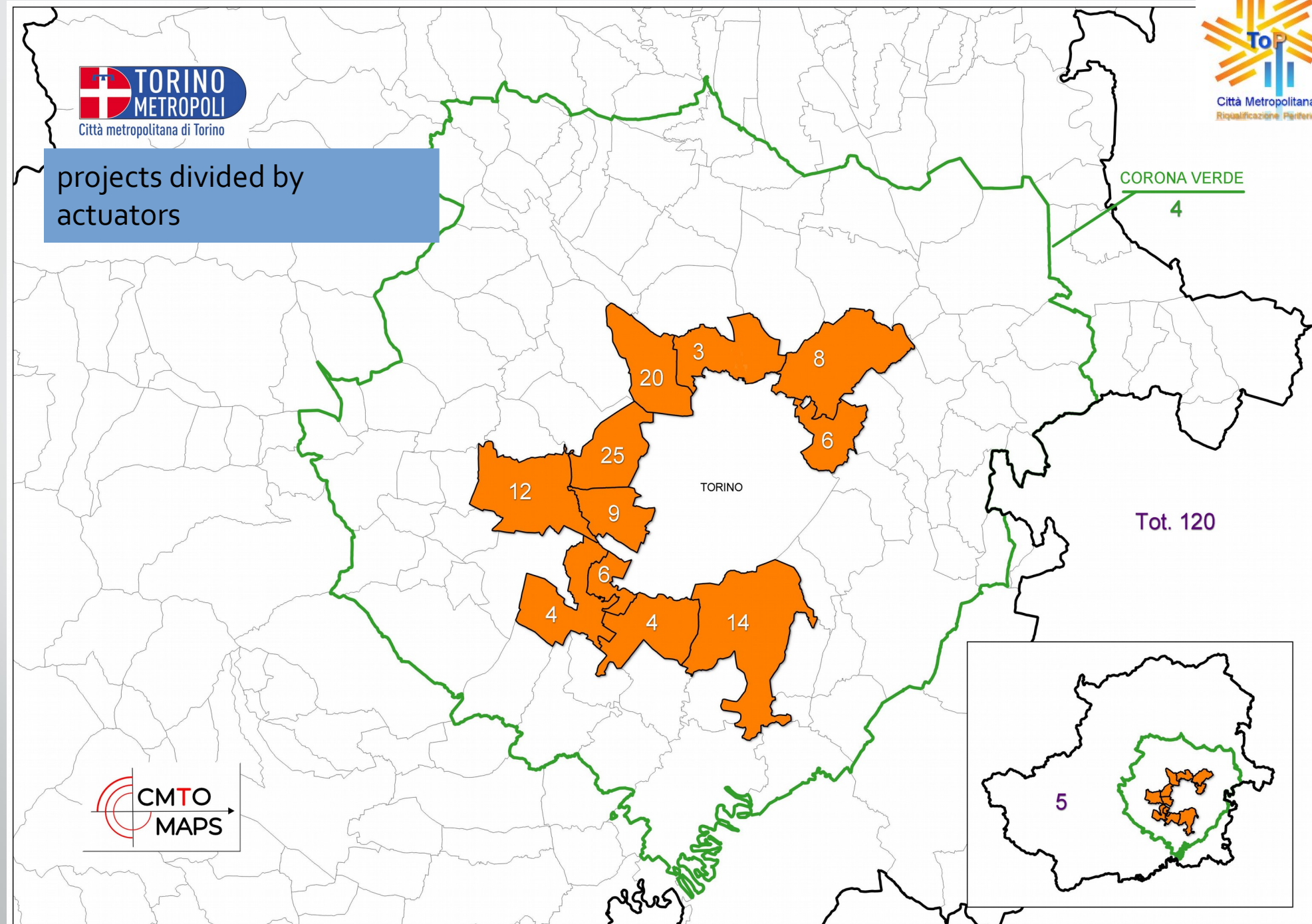
- **111** specific projects proposed by the 11 municipalities, divided into 4 categories.
- **5 transversal initiatives** implemented directly by the Metropolitan City of Turin to support innovation, micro-entrepreneurship, the attraction of investments, particularly in the manufacturing sector, aimed at employment, highlighting everyone the municipalities concerned unemployment rates - in particular among young people - much higher than the regional average
- **4 interventions of vast area**, implemented by **Piedmont Region**

The total number of interventions is **120**.

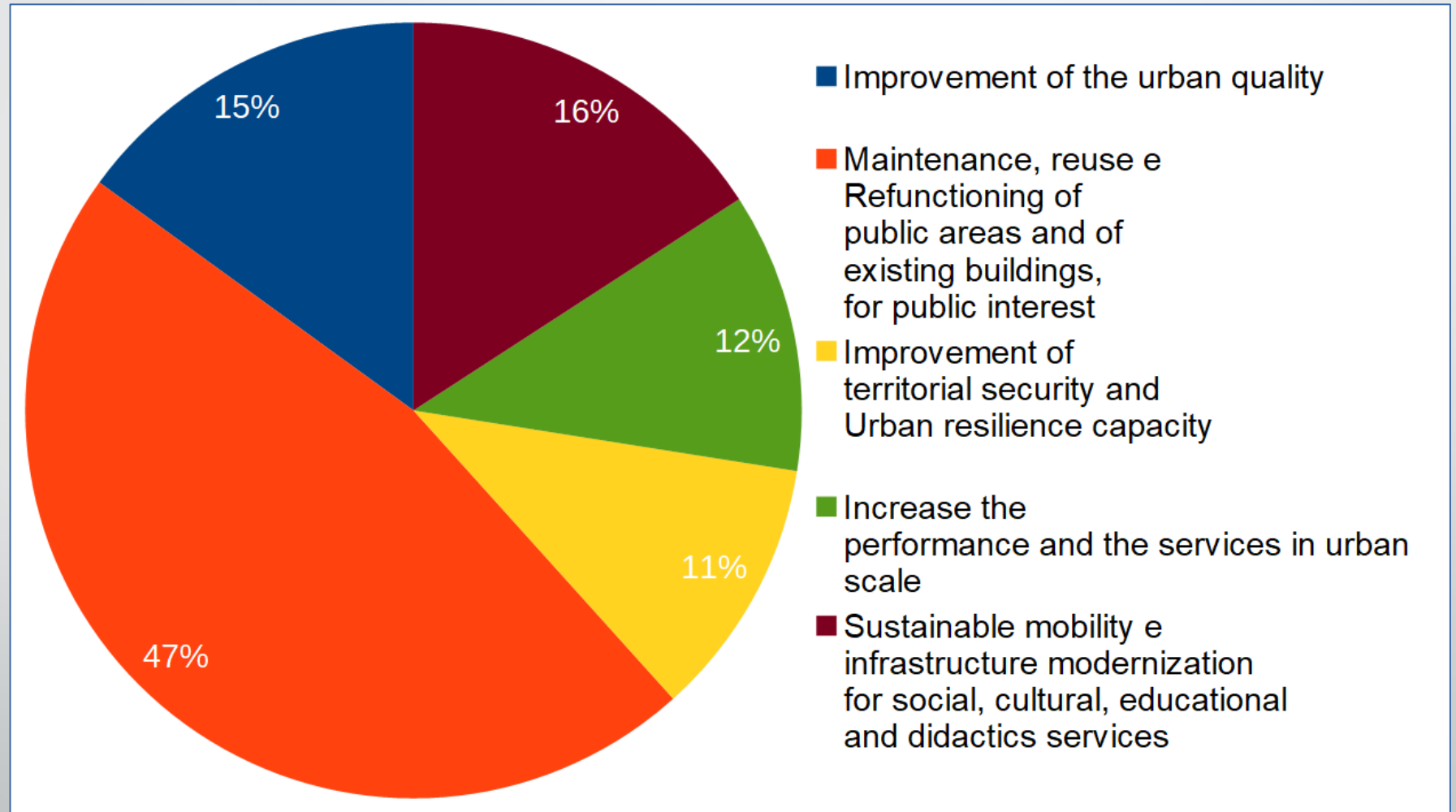




projects divided by
actuators



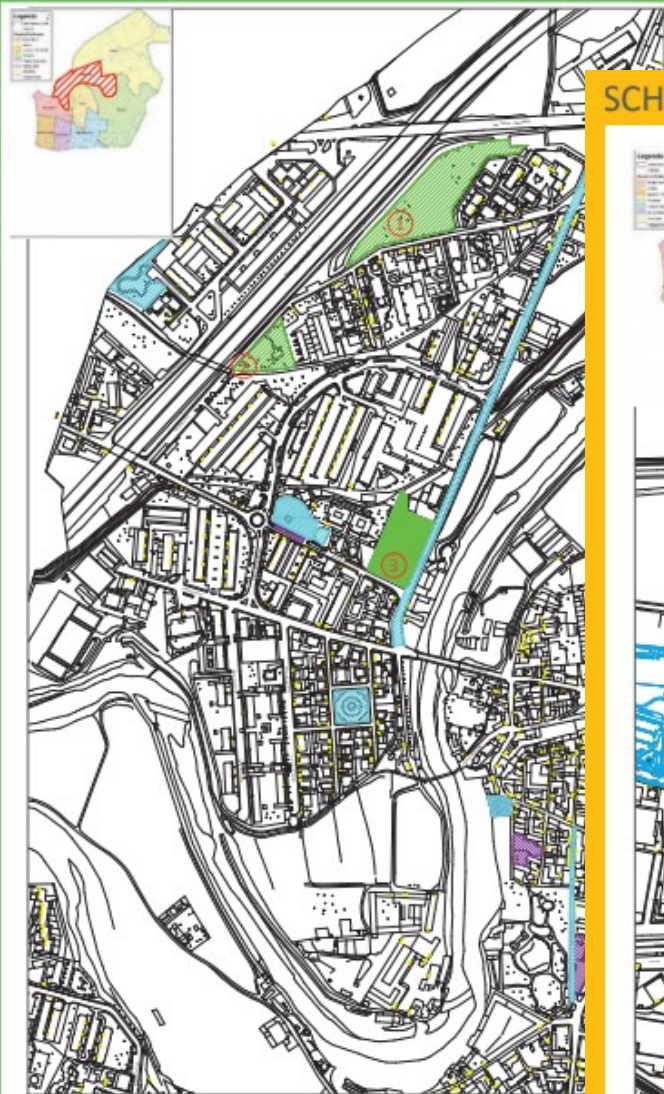
projects divided into 4 categories



- 47% of the project are included in the category of Maintenance, reuse and refunctioning.
- The remaining part in equal parts among the other categories

SCHEDA A2 QUARTIERE VILLAGGIO DORA

- SGOMBERO AREE VERDI POCO ATTREZZATE E/O OCCUPATE ABUSIVAMENTE
- RIUTILIZZO DELLE AREE ATTRAVERSO LA REALIZZAZIONE: AREE GIOCO, BOSCHI URBANI, ORTI COLLETTIVI, AREE FITNESS



AREA VERDE
VIA DELLA
CROCE



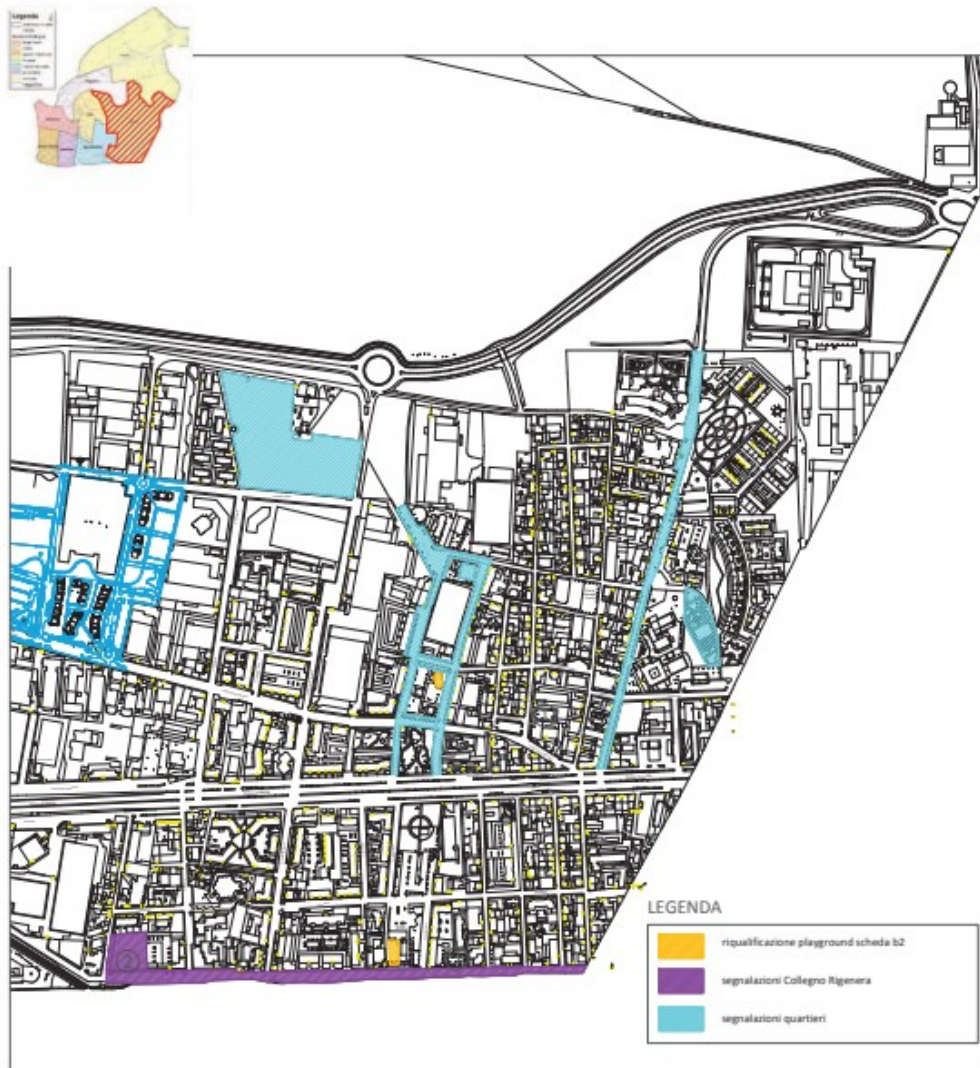
AREA VERDE
VIA DELLA
CROCE



GIARDINO
SPINELLI
SU VIA

SCHEDA B2 QUARTIERE BORGATA PARADISO

RIQUALIFICAZIONE PLAYGROUND



ITER PROCEDURALE

Procedimento BOTTOM UP:
Attraverso percorsi partecipativi si sceglieranno i
progetti da realizzare si attiveranno forme
partecipative anche per la futura gestione



AREA TIPO: PISTA DI PATTINAGGIO
CORSO ANTONY E CAMPO BASKET
CORSO MONTELLO





il percorso principale



sedute in cemento



CITTÀ di GRUGLIASCO

Settore Lavori Pubblici, Demanio e Patrimonio

Grugliasco – AZIONE A) MIGLIORAMENTO DELLA QUALITÀ E DEL DECORO URBANO

Nome identificativo del progetto: "Eiqualificazione area verde compresa fra le vie Galimberti e Montanaro"



un percorso secondario



percorsi dissestati, sconnessi

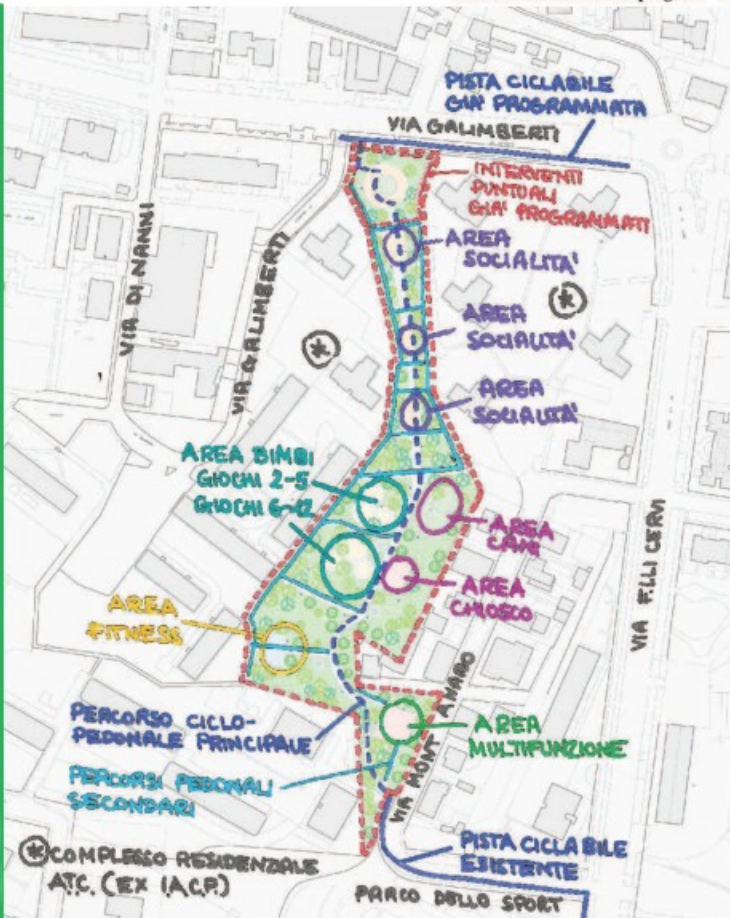


pavimentazione dissestata



percorsi dissestati, sconnessi

LAYOUT DI PROGETTO - fuori scala



SUGGERIMENTI PROGETTUALI



l'area cani



il percorso ciclopedonale



l'area fitness



i percorsi pedonali



il gazebo metallico



le aree giochi

THE INVESTMENT

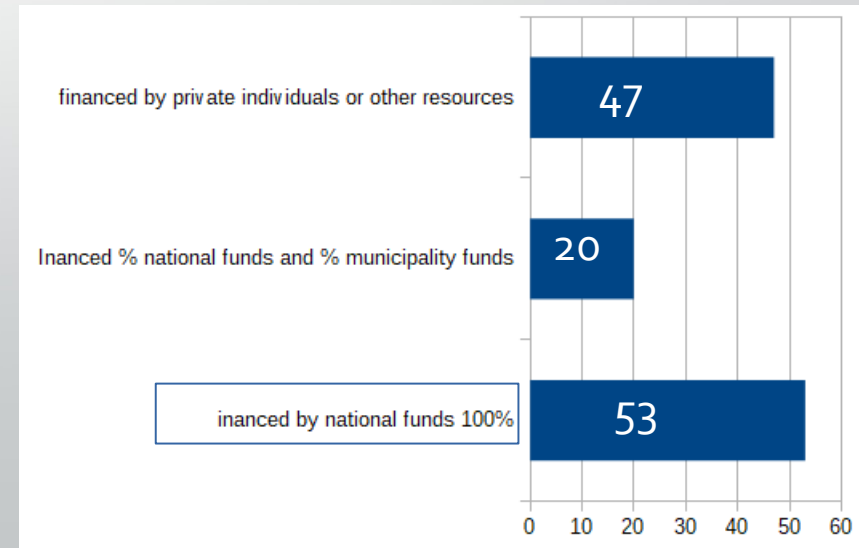
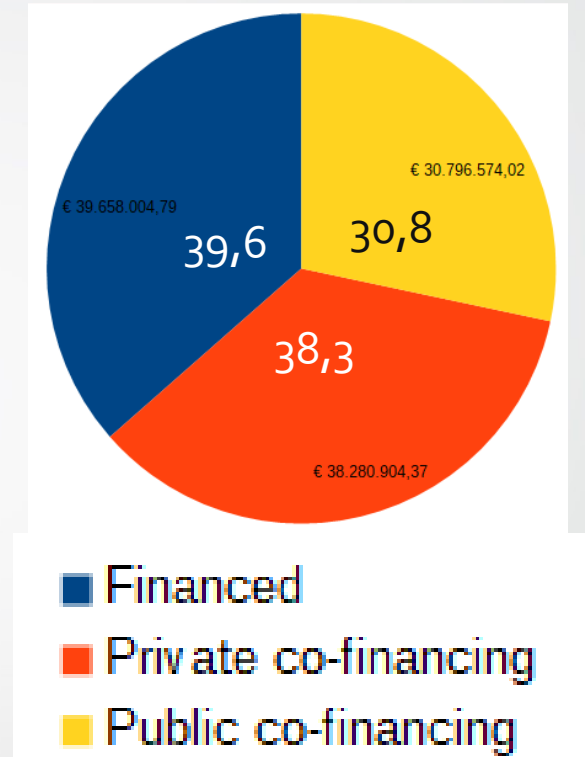
the total investment of "ToP Metro Project": **108.7 mil €**

- co-financed for **39.6 mil €** by national funds
- private co-financing: **38.3 mil €**
- public co-financing: **30.8 mil €**

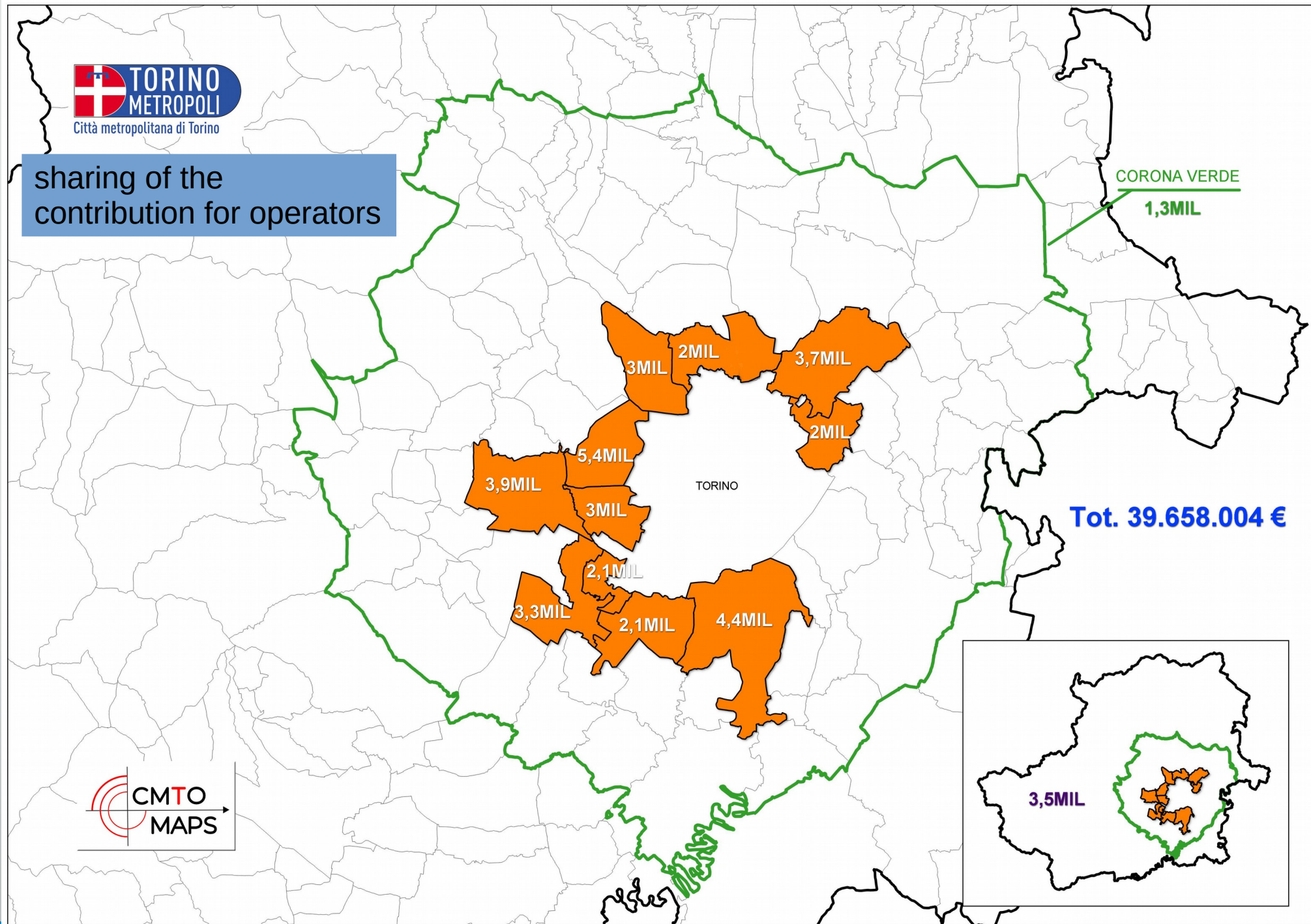
The total number of interventions is **120**.

73 are financed by national funds:

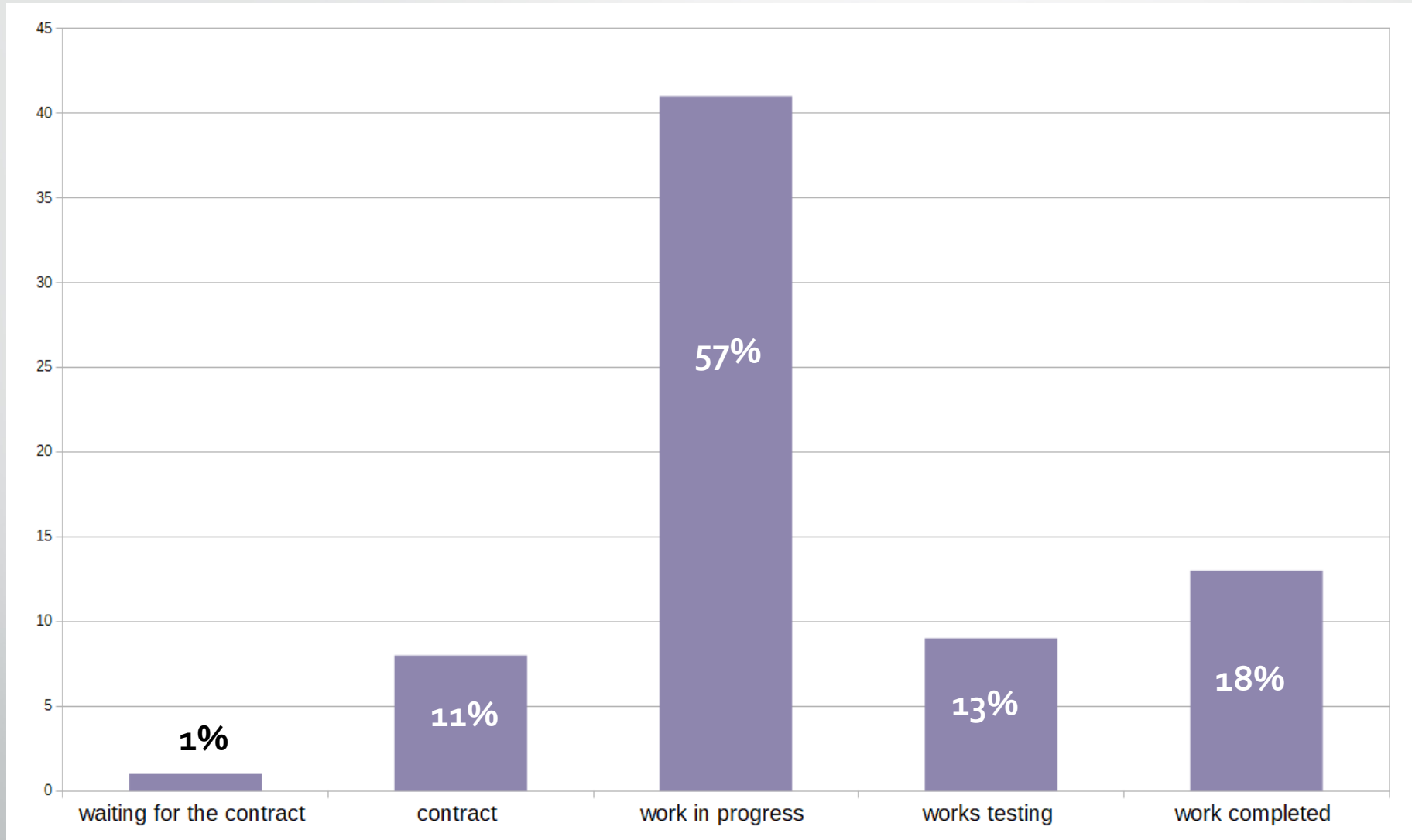
- **53** for the 100% of the amount
 - **20** part national funds and part municipalities funds
- the remaining **47** are financed by private or other resources



sharing of the
contribution for operators



TIMING OF REALIZATION



Beginning of the project 9 April 2018 / end of the last project March 2023



Benefits of the project:

- a unitary project that has the objective of completing all the interventions
- creating **strong connections and synergies between the partners** for an effective co-planning process
- greater coherence of the project
- favored the integration of the various projects, maximizing their effects.

Common objective:

- contribute to the integration of the different parts of the metropolitan territory,
- improving social cohesion,
- revitalization and economic growth
- Overcome the dichotomy between center and suburbs
- Provide to equip the metropolitan territory with the ability to prepare for the future, governing transformations in a logic of competitive growth, in line with the role of the metropolitan cities

Targets:

improve the quality of life of the population and the resilience of the territory

To be reached through:

- the regeneration of the urban texture (residential built areas, green areas, public spaces for aggregation and meeting, recovery and reuse of disused production areas),
- incentives to companies
- improvement of community services
- measures to prevent and increase safety (both in terms of combating crime and combating pollution and environmental risk)

thanks for your attention!



Arch. Paola Boggio Merlo

Maps elaborated by



office: territorial development projects and urban redevelopment
Department of Economic Development - Metropolitan City of Turin