

Turin-Oslo

Metropolitan governance in Spatial and Strategic planning

making use of the ESPON SPIMA project through group exchange

24 October 2019 - Sala Consiglieri, Via Maria Vittoria 12, Torino

THE NEW CMT_o SUSTAINABLE URBAN MOBILITY
PLAN – PUMS

Elena Pedon – Città metropolitana di Torino
Luca Staricco – Politecnico di Torino

EUROPEAN GUIDELINES FOR SUMPS

 European Platform
on Sustainable Urban
Mobility Plans



Guidelines

Developing and Implementing
a Sustainable Urban Mobility Plan



Funded by the Intelligent Energy Europe
Programme of the European Union

 European Platform
on Sustainable Urban
Mobility Plans



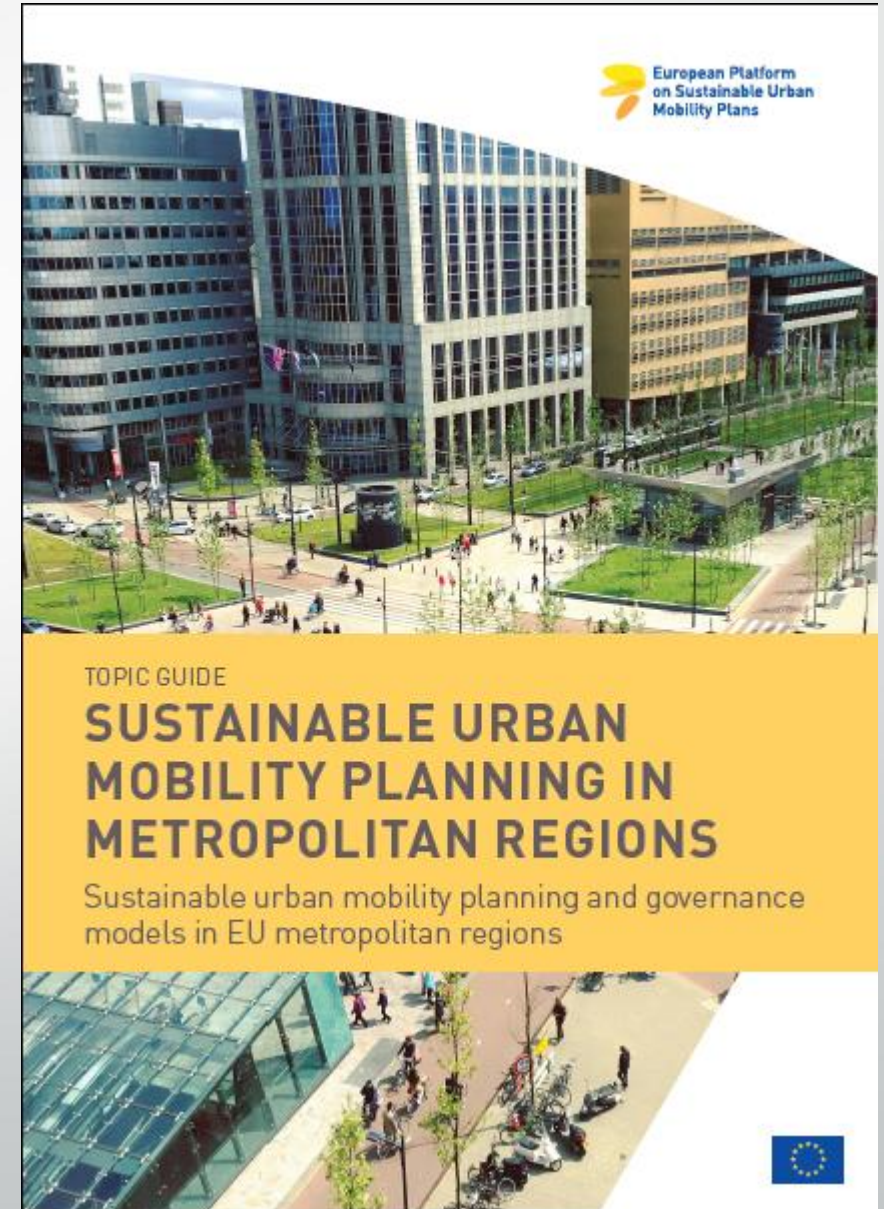
GUIDELINES FOR DEVELOPING AND IMPLEMENTING A SUSTAINABLE URBAN MOBILITY PLAN

SECOND EDITION

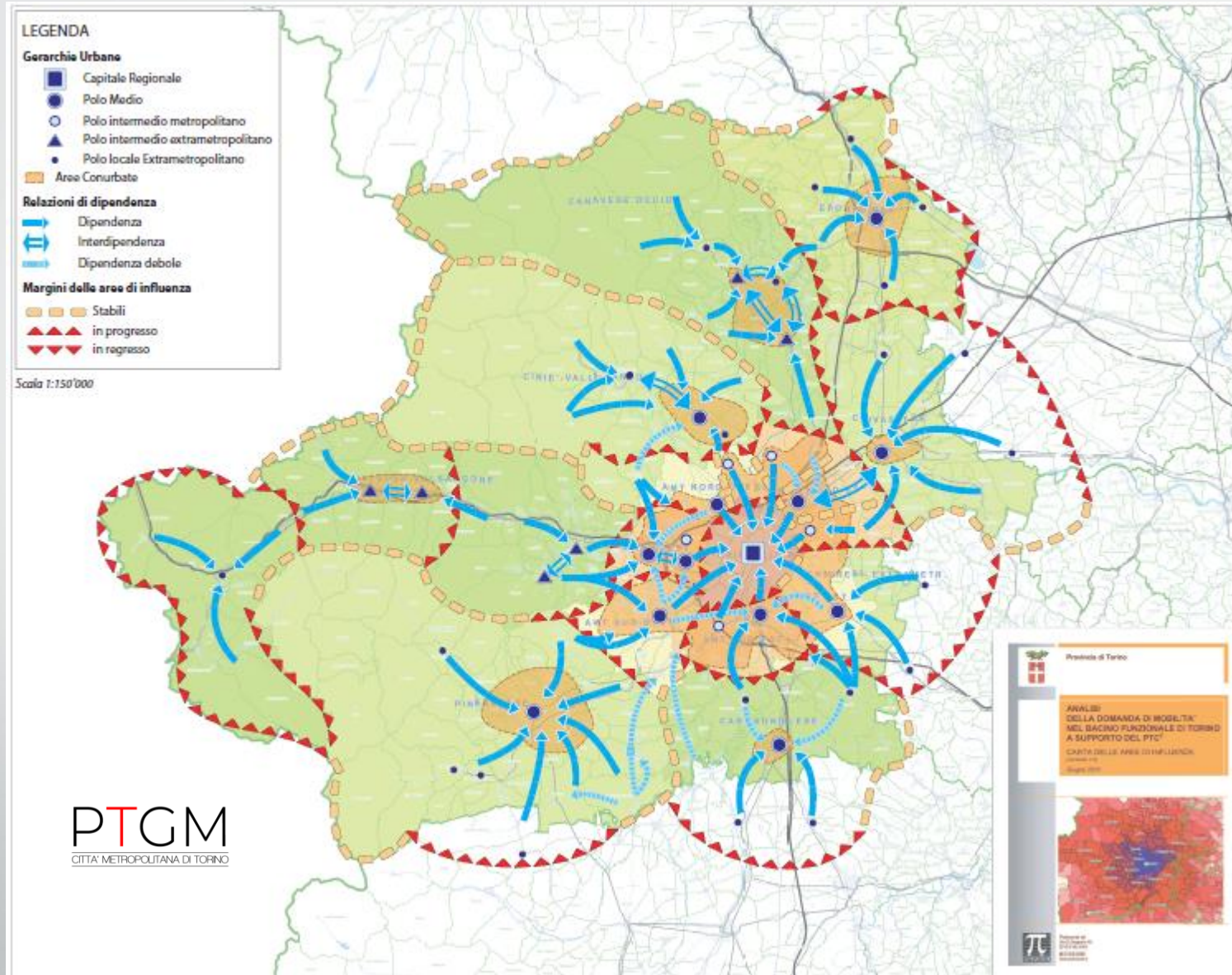


EUROPEAN GUIDELINES FOR SUMPS

- 1 Plan for sustainable mobility in the “functional urban area”
- 2 Cooperate across institutional boundaries
- 3 Involve citizens and stakeholders
- 4 Assess current and future performance
- 5 Define a long-term vision and a clear implementation plan
- 6 Develop all transport modes in an integrated manner
- 7 Arrange for monitoring and evaluation
- 8 Assure quality



THE FUNCTIONAL URBAN AREA OF TURIN



THE FUNCTIONAL URBAN AREA OF TURIN

a) Mainardi e Tombola (1982)



b) Bartaletti (2009)



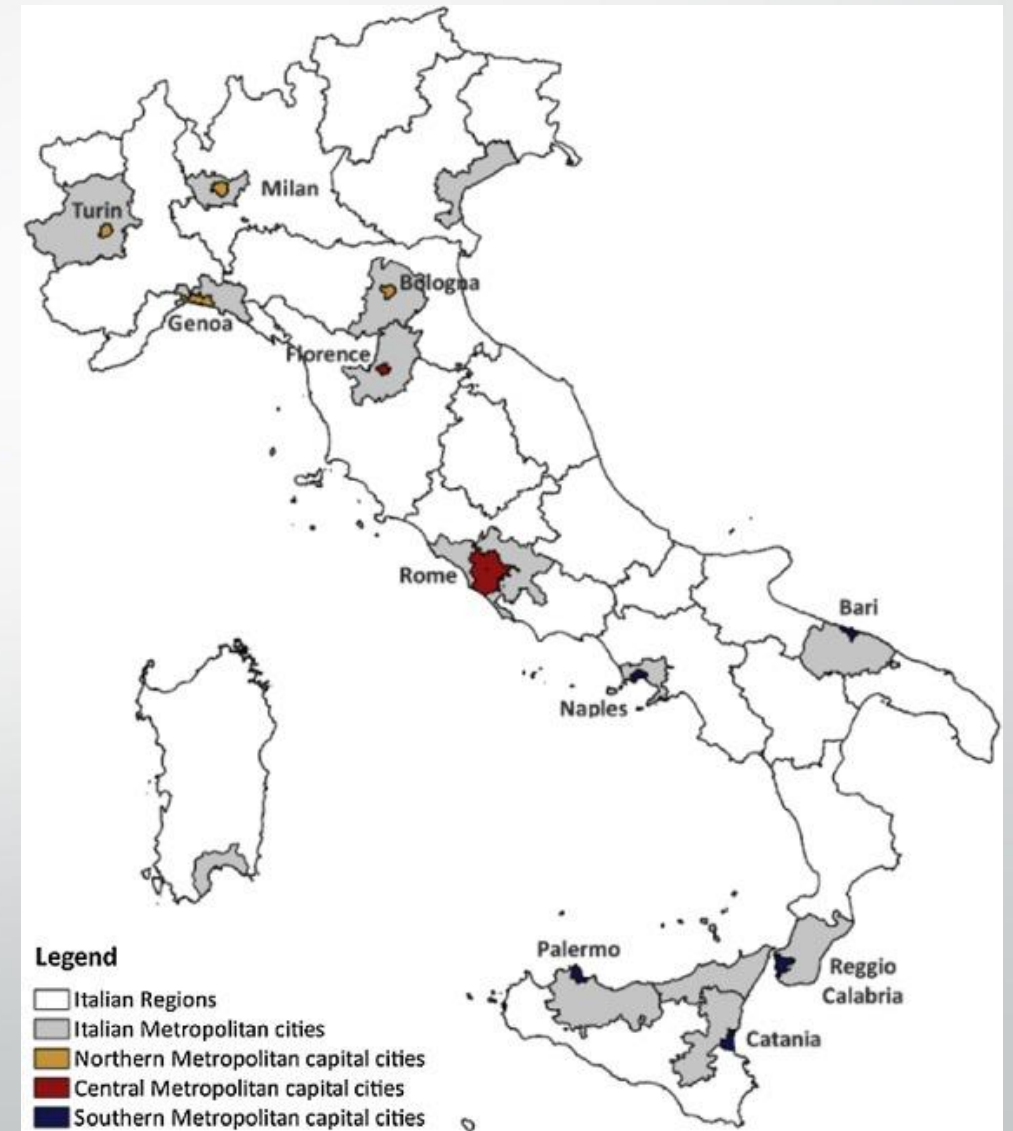
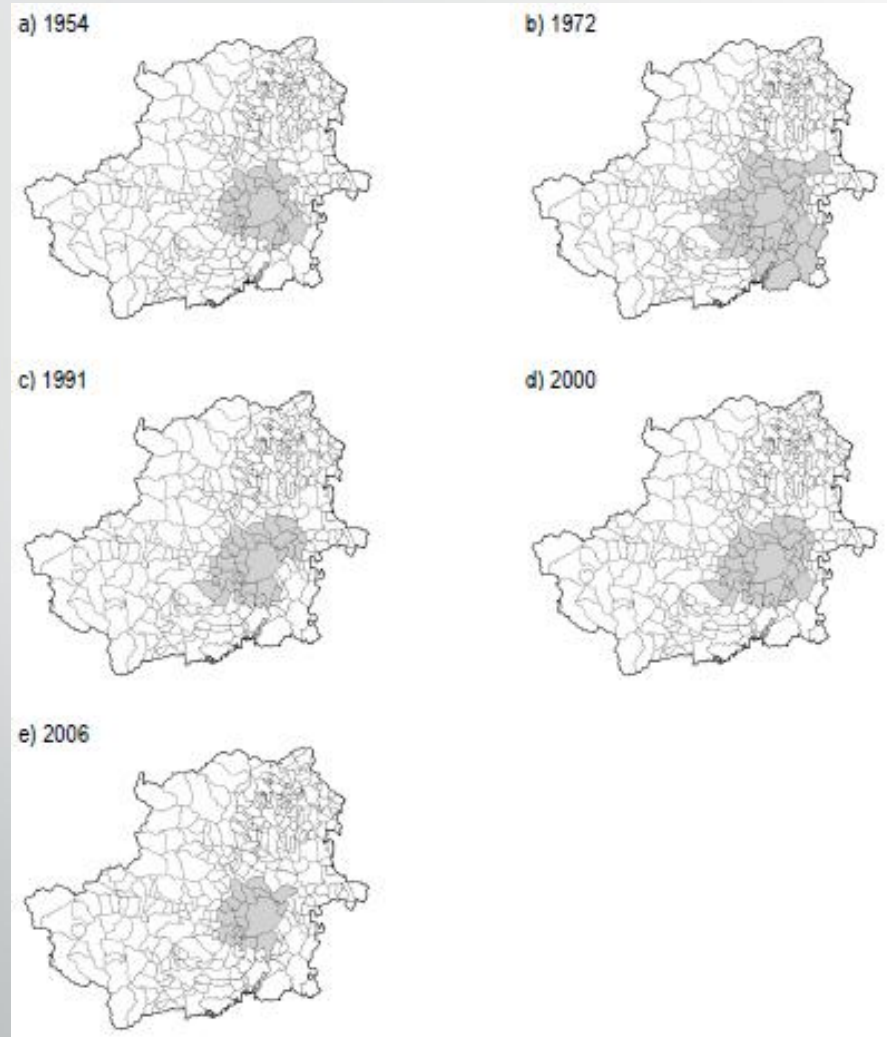
c) OECD (2012)



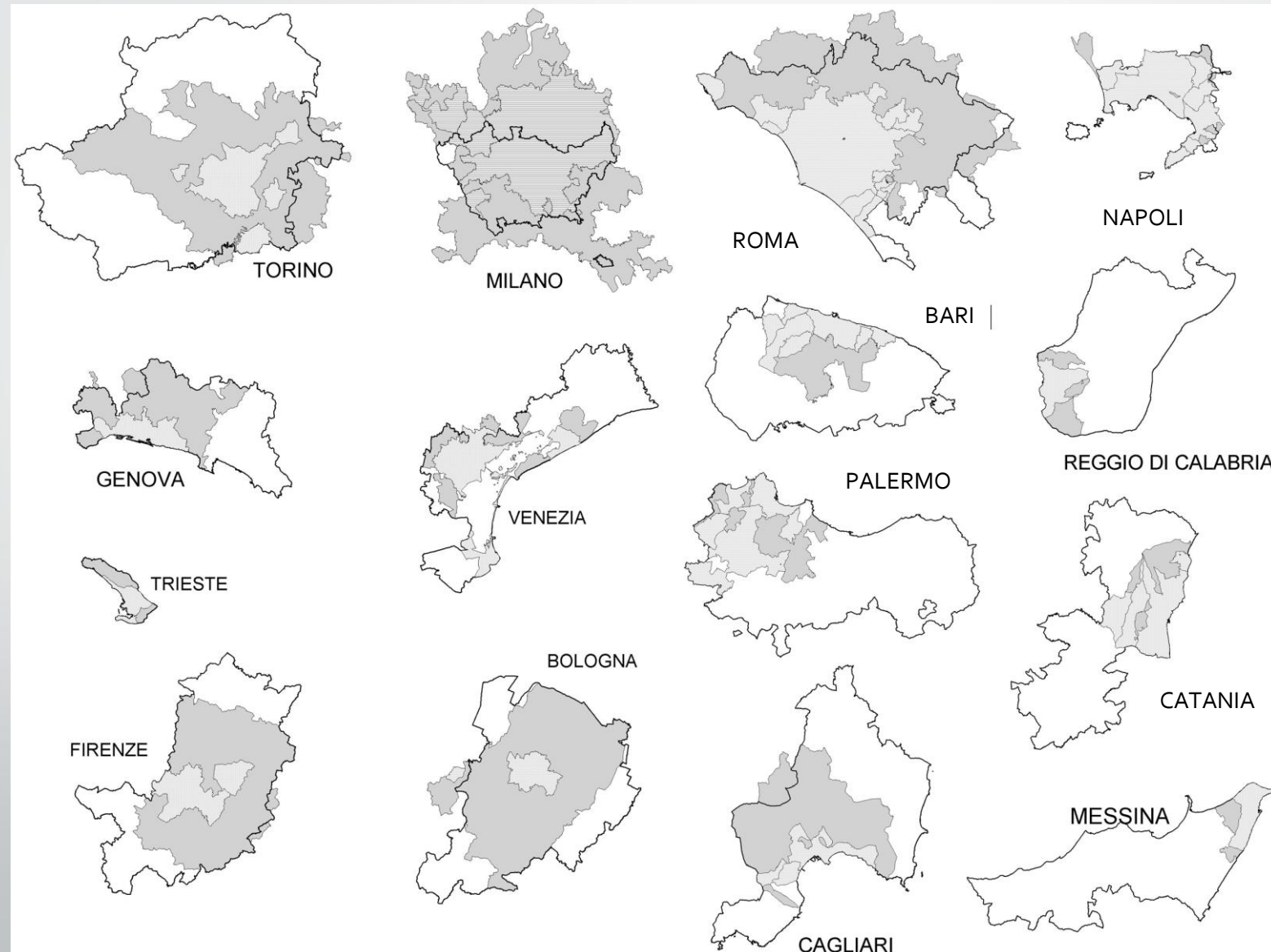
d) ESPON (2011)



FROM METROPOLITAN «AREAS» TO METROPOLITAN «CITIES»



FUNCTIONAL AREAS VS. METROPOLITAN CITY BOUNDARIES



PLANNING TOOLS FOR URBAN MOBILITY IN ITALY

1992: new Italian Highway Code

Urban traffic plan (Piano urbano del traffico – PUT)

Compulsory for Municipalities having more than 30,000 inhabitants

PLANNING TOOLS FOR URBAN MOBILITY IN ITALY

The **Urban traffic plan**

- is articulated in three levels:

1. Piano generale del traffico urbano (PGTU)
2. Piano particolareggiato del traffico urbano (PPTU)
3. Piano esecutivo del traffico urbano (PETU)

- Integrates sectorial plans:

1. Plan of the cycling network
2. Urban program of the parking areaa
3. Urban plan for road safety

PLANNING TOOLS FOR URBAN MOBILITY IN ITALY

2000: Law 340/2000

Urban mobility plan (Piano urbano della mobilità – PUM)

“Compulsory” for (agglomeration of) Municipalities having more than 100,000 inhabitants, and for “polycentric or sprawled metropolitan areas”

PLANNING TOOLS FOR URBAN MOBILITY IN ITALY

PUM	PUT
Strategic	Tactic
Long term (10 years)	Short term (2 years)
Investments	Management
Enhancing infrastructures	Unchanging infrastructures

PLANNING TOOLS FOR URBAN MOBILITY IN TURIN

1995: first **Urban traffic plan (PUT)** of the City of Turin

2000: first **PGTU (Urban traffic general plan)** of the City of Turin
(lead partner) + 26 neighbouring Municipalities

2001: second **Urban traffic plan (PUT)** of the City of Turin

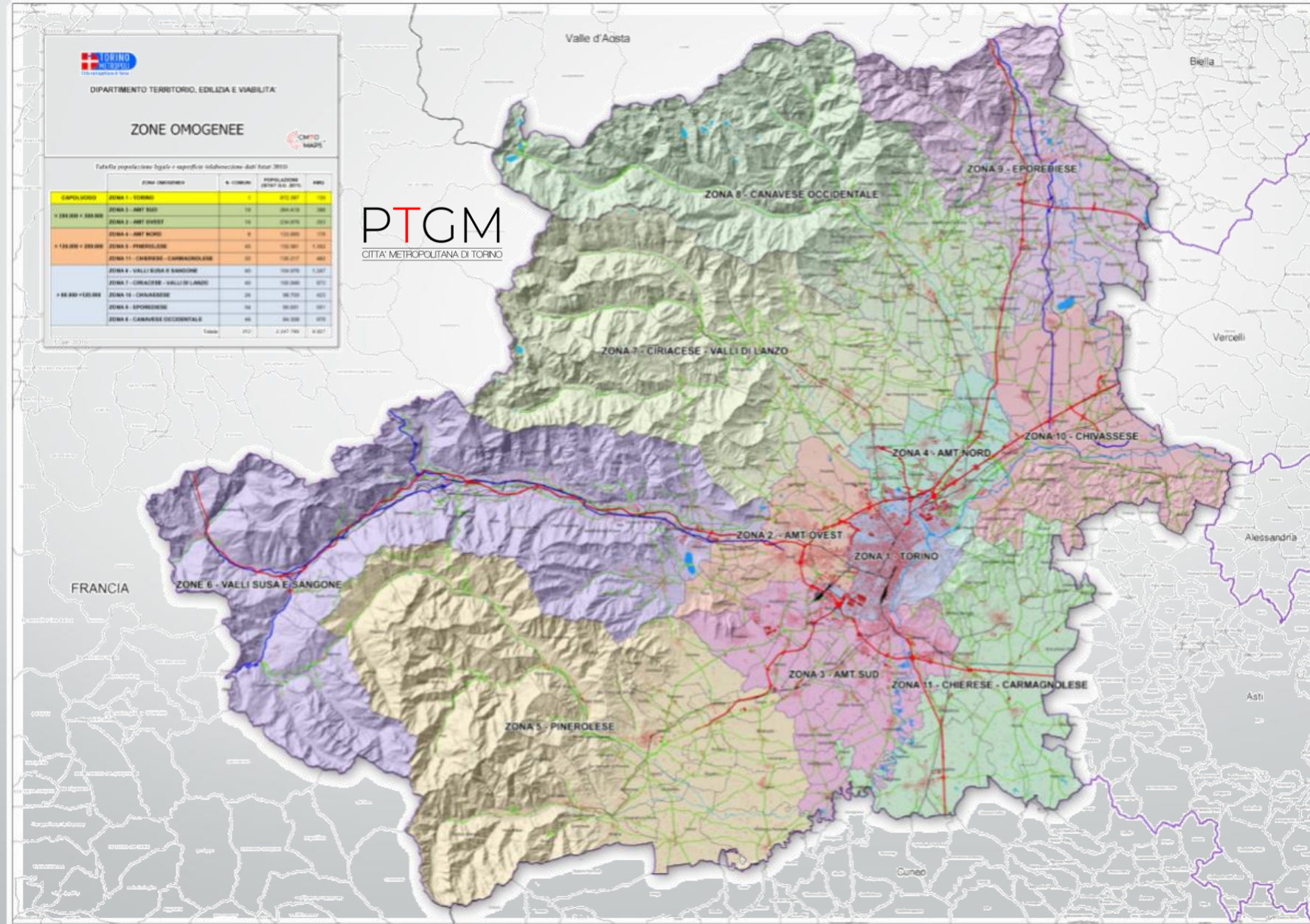
2011: first **Sustainable urban mobility plan (PUMS)** of the City of Turin

PLANNING TOOLS FOR URBAN MOBILITY IN ITALY

2017: Italian guidelines for SUMP

SUMPs have to be adopted by Metropolitan cities or by (Associations of) Municipalities having more than 100,000 inhabitants

HOMOGENEOUS AREAS OF THE METROPOLITAN CITY OF TURIN



OTHER CHALLENGES FOR THE SUMP OF TURIN

Citizen involvement

Integration (e.g. with the General territorial metropolitan plan)

Monitoring, assessing, reporting (and feedback on the plan)

SUMP OF TURIN PROCESS

(2019) Interdisciplinary and inter-institutional working group (scientific Committee, Memorandum of understanding with Turin, agreements with the Piedmont Region)

(2019) Territorial and socio-economic framework: Planning and regulatory framework, study of transport offer (roads, cycle paths, limited traffic areas, public transport, interchange nodes), study of mobility needs and demand, interaction between demand and supply, SWOT analysis.

(2020) Participatory planning process: stakeholder forum (definition of plan objectives for homogeneous areas),

citizenship consultation

SUMP OF TURIN PROCESS

(2020) Start of the Strategic Environmental Assessment Process; construction of alternative scenarios with actions and interventions for homogeneous areas.

(2020) Choice of the Plan scenario (with focus on homogeneous areas) with multi-criteria techniques, integration of the results of the strategic environmental assessment, definition of the Action Plan and of the Schedule of Interventions. Adoption of the PUMS.

(2021) Approval of the PUMS in the Metropolitan Council following public consultation.