

Turin-Oslo Metropolitan governance in Spatial and Strategic planning

making use of the ESPON SPIMA project
through group exchange

24 ottobre 2019 - Sala Consiglieri, Via Maria Vittoria 12, Torino

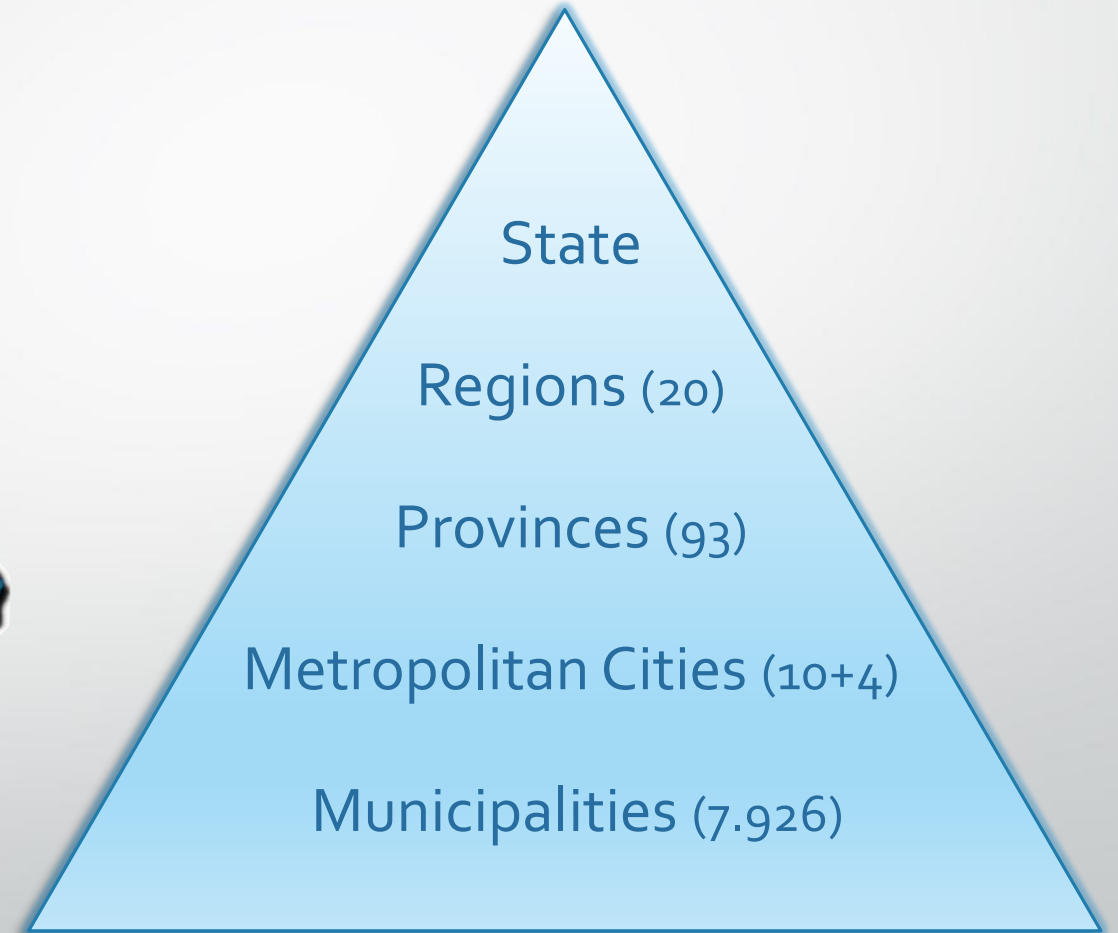
ISTITUTIONAL ORGANIZATION AND SPATIAL PLANNING

Stefania Grasso | Project Unit of General Spatial Planning

Metropolitan City of Turin

ISTITUTIONAL AND ADMINISTRATIVE LEVEL

Constitution Act | art. 114



ITALIAN SPATIAL PLANNING SYSTEM



National level

National Law n. 1150/1942
(Urbanistic Law)

NL n. 8/1972
(Conferring functions on urbanistic and viability to Regions)

NL142/1990
(Local authority regulations)

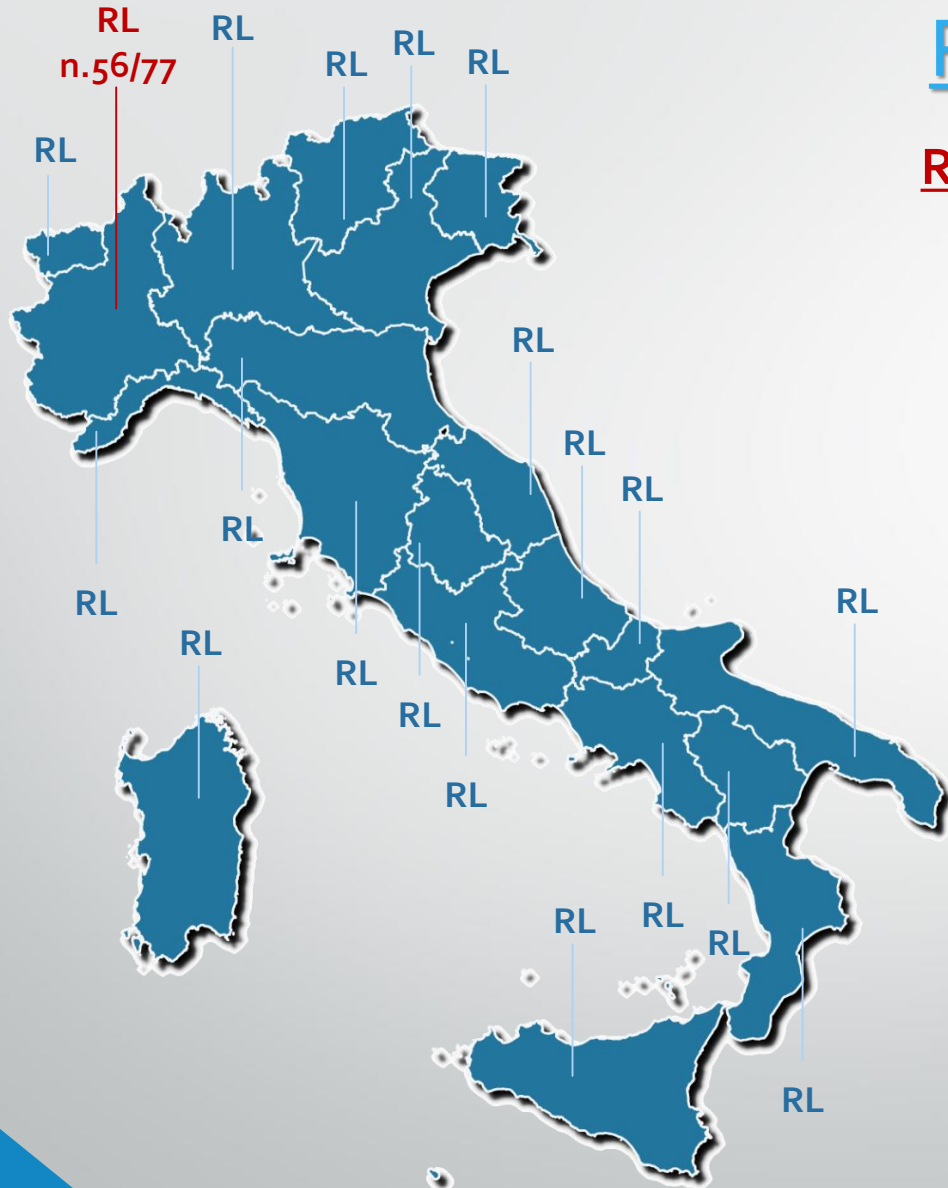
NL 112/1998
(Conferring of national functions to the regions and local authorities)

NL 3/2001
(constitutional modification)

NL 42/2004
(Landscape and cultural heritage)

NL 56/2014
(metropolitan cities, provinces, union and municipalities merge)

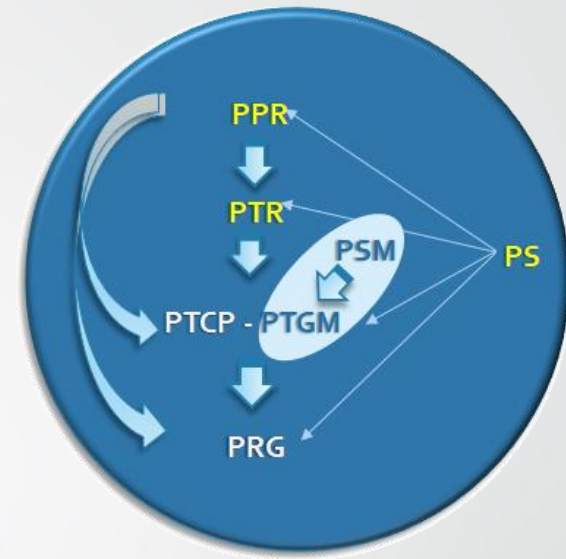
ITALIAN SPATIAL PLANNING SYSTEM



Regional level

Regional Laws (RL) rules:

- Regional Landscape Plan (**PPR**)
- Regional Spatial Plan (**PTR**)
- Provincial Spatial Plan (**PTCP**)
- Metropolitan Spatial Plan (**PTGM**)
- Local Plan (**PRG**)
- Sectoral Plans (**PS**)



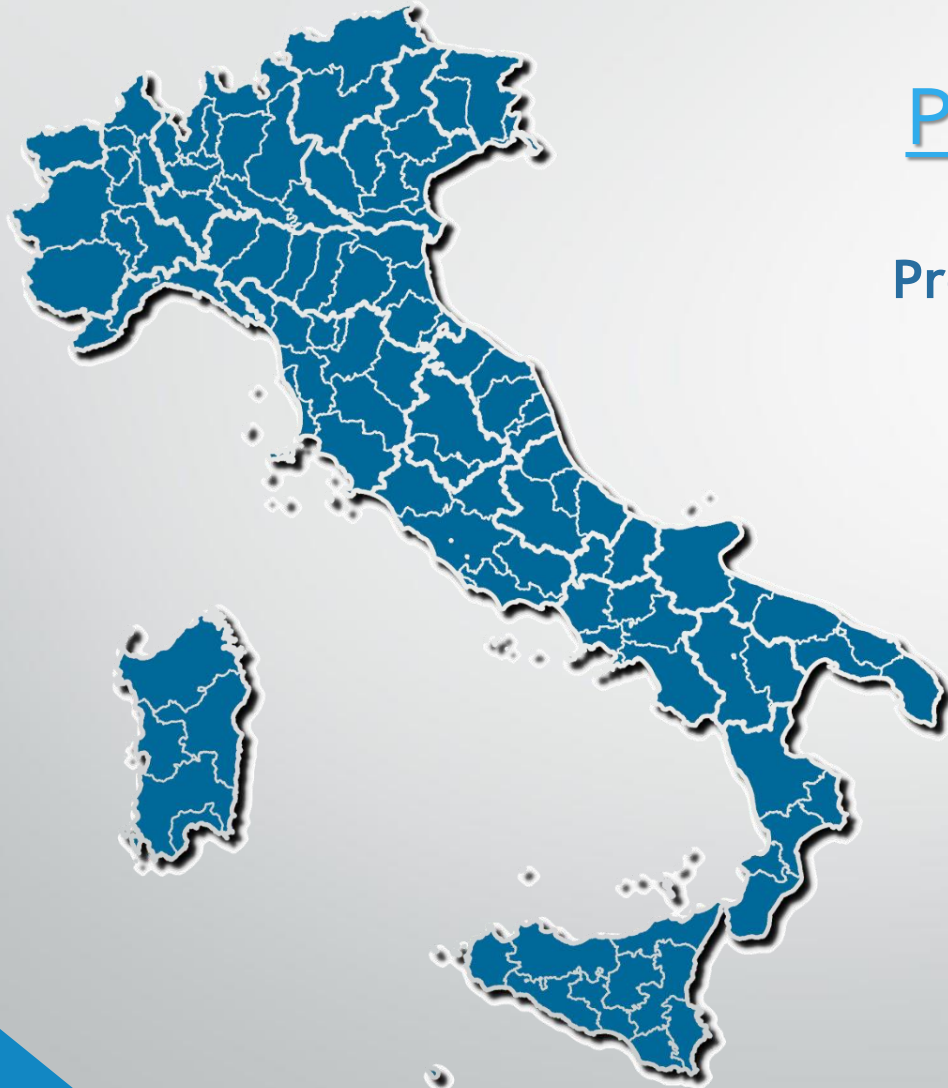
Regional Plans

- Regional Landscape Plan (**PPR**)
- Regional Spatial Plan (**PTR**)

Sectoral Plans

- Regional Transport Plan (strategic)
- Water Safeguard and Management Plan (**PTA**)
- Regional extractive activities Plan
- Regional Forestry Plan (**PFR**)
- Regional Air Quality Plan
- Sustainable Urban Mobility Plan (**PUMS**)

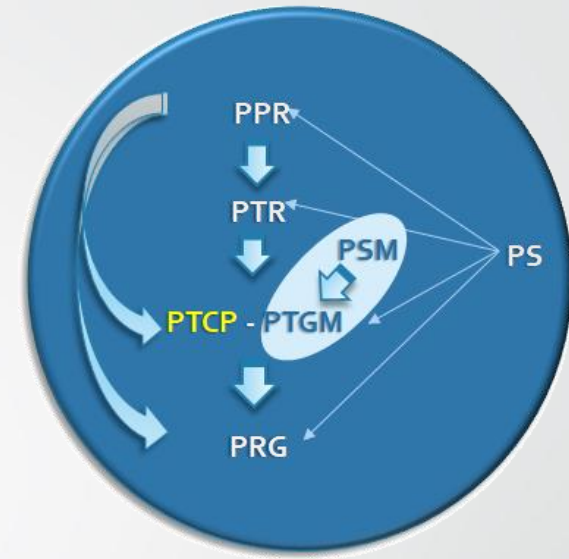
ITALIAN SPATIAL PLANNING SYSTEM



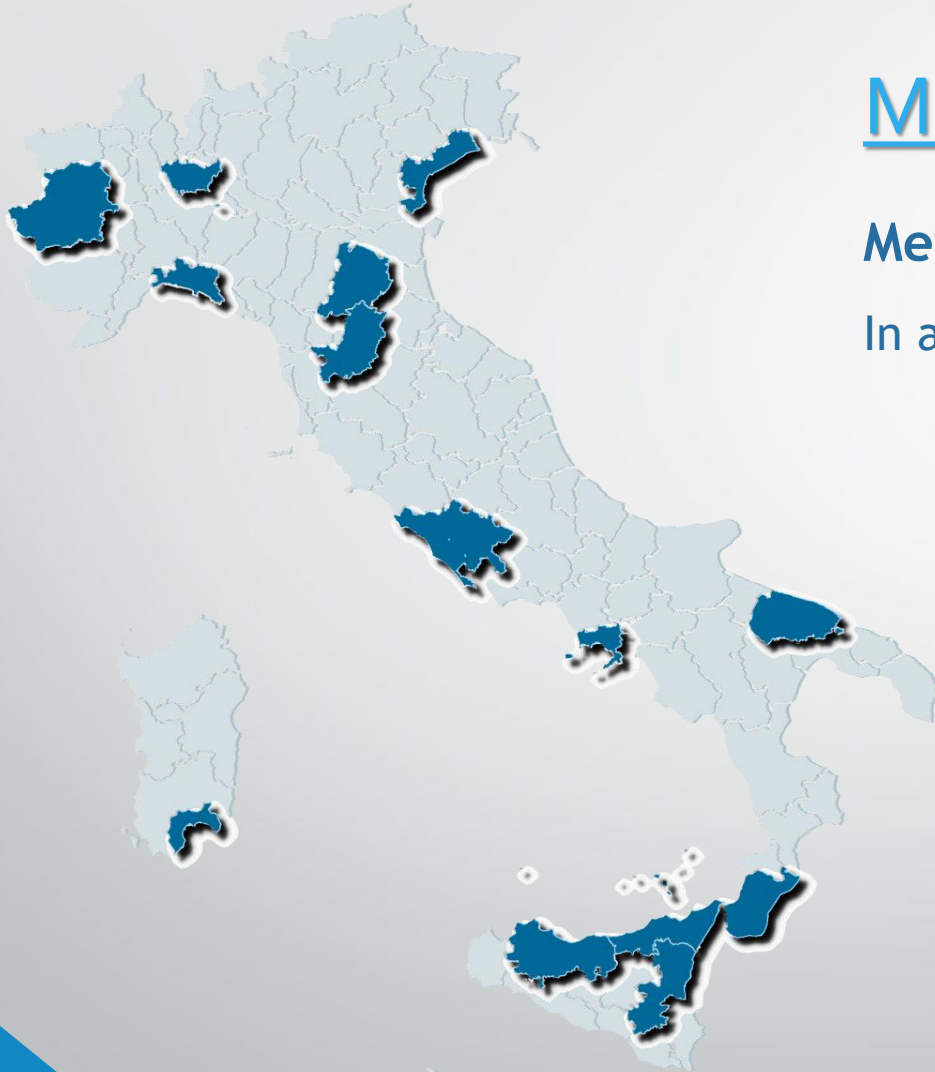
Provincial level

Provincial Spatial Plan (PTCP):

- ▶ Destinations based on **territories vocations**
- ▶ main **infrastructures** and the main **communication** lines;
- ▶ addresses for water, hydrogeological in general for **soil consolidation** and **water regulation**
- ▶ **Parks and nature reserves**



ITALIAN SPATIAL PLANNING SYSTEM



Metropolitan level

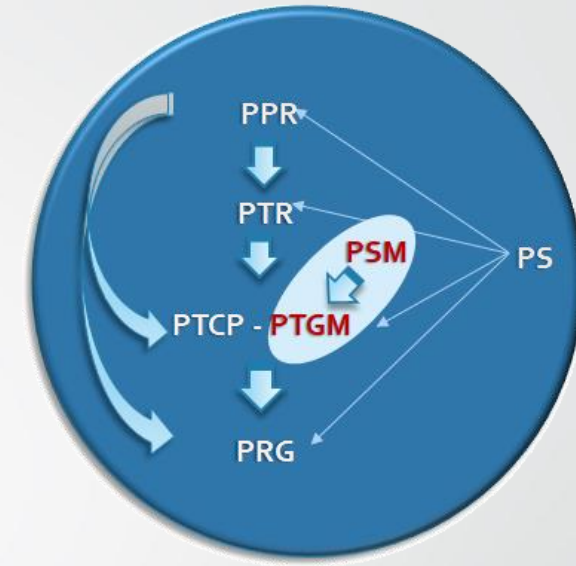
Metropolitan cities functions

In addition to Province functions:

- ▶ **Strategic development** of metropolitan territory
- ▶ Promote and integrated management of **services, Infrastructures** and **communication** networks
- ▶ **Institutional relationship**

Metropolitan Plans:

- ▶ Metropolitan Strategic Plan (**PSM**)
- ▶ Metropolitan Spatial Plan (**PTGM**)



ITALIAN SPATIAL PLANNING SYSTEM

Municipality level

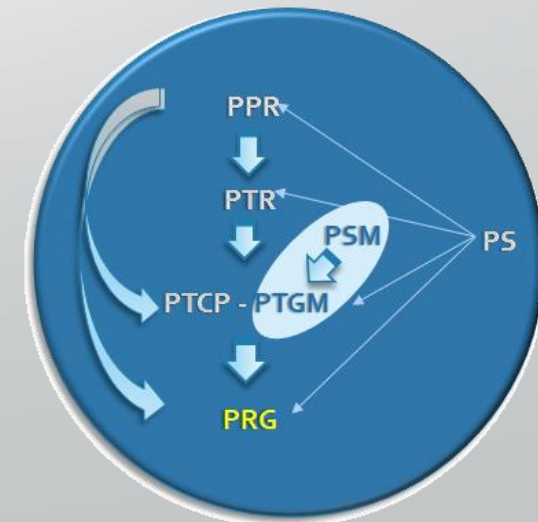


Local Plans (**PRG**)

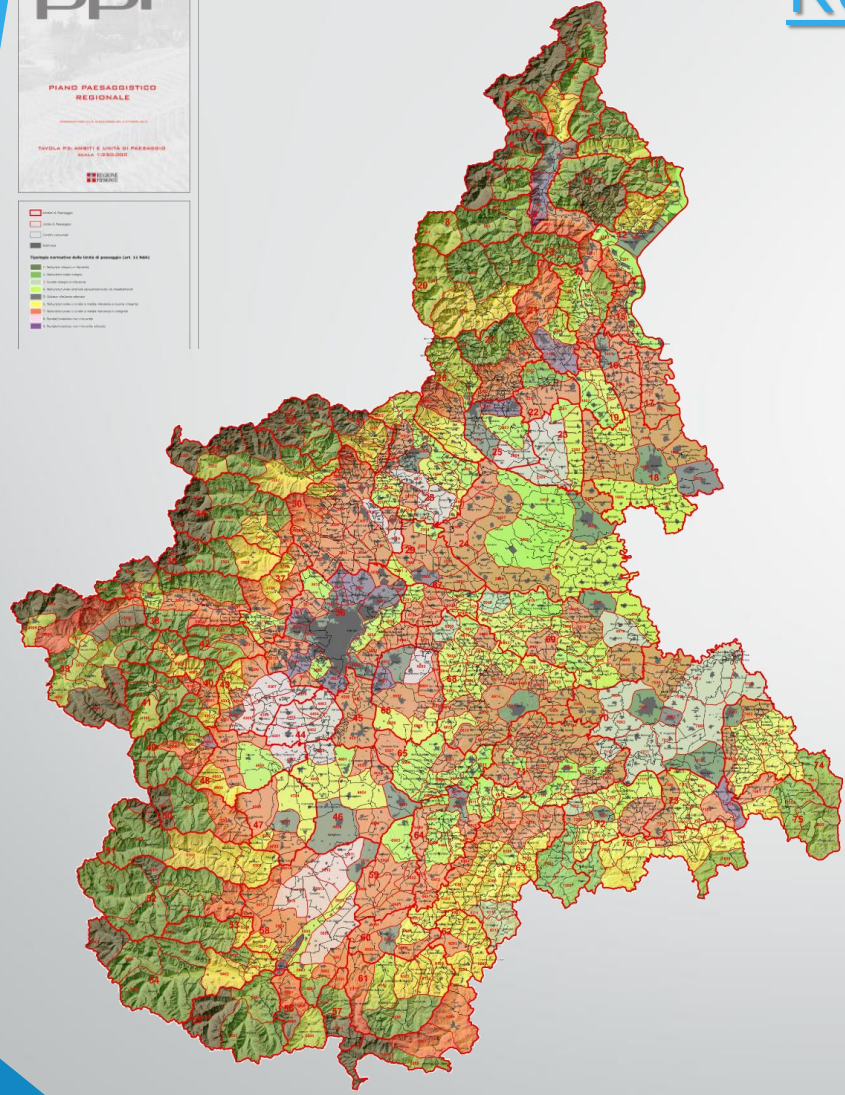
Ob: Satisfy social and local communities needs

Contents briefly (art. 12, LR 56/77):

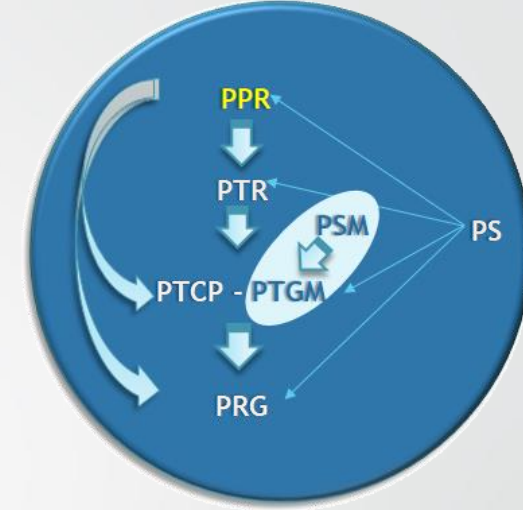
- Defines rules for **building and territory transformations**
- Identify areas for **residential, agricultural, productive** and **commercial** expansion, **historical** city centre and building of historic-artistic- **environmental** importance
- Determines **uses of soil**, types and methods of **construction interventions**
- Defines the organization of the **infrastructure system**



SOME EXAMPLE



Regional Landscape Plan



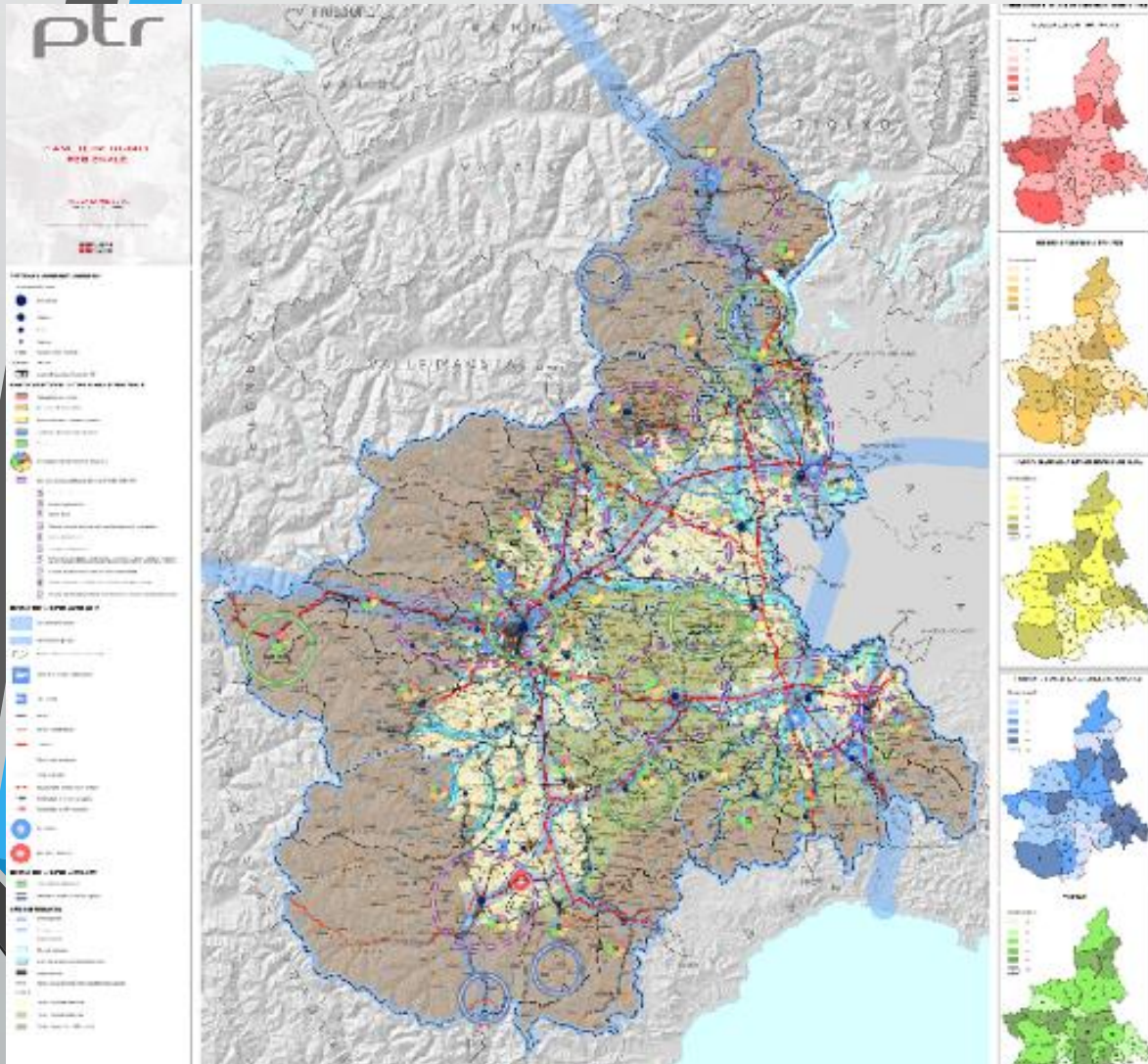
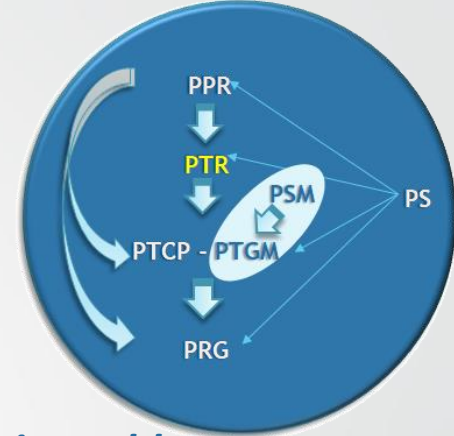
Ob (art. 143, NL 42/2004):

“Landscape planning for sustainable development, conscious territory use, lower soil consumption and landscape safeguard

Content briefly:

- **buildings and areas of public interest** and specific prescriptions for use;
- risk factors and **landscape vulnerability** elements,
- interventions, **measures** for compromised or **degraded areas**;
- measures for **landascape contextualization** of building construction;
- **quality objectives** for each area

Regional Spatial Plan



Ob. (art. 5, LR 56/77):

“... defines general and sectoral planning addresses...”

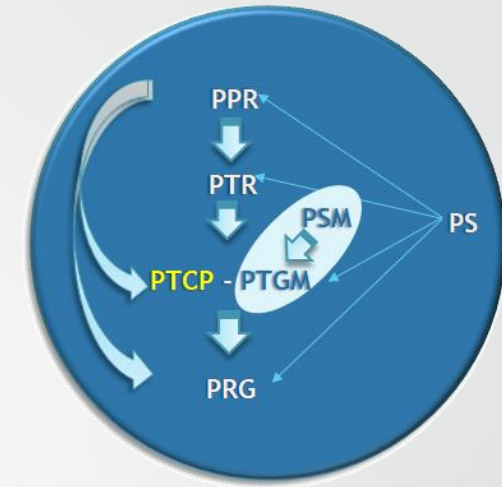
Contents briefly:

- Safeguard of **primary resources**, **soil protection** from flooding,
- Safeguard and enhancement of **historical, artistic and environmental heritage**, **protected areas**, and **tourism** interest zones
- **Criteria** to locate **infrastructures**, **services**, and **productive areas** of regional interest.
- **Criteria**, **addresses** and main **prescriptions** to **planning tools**.

SOME EXAMPLE

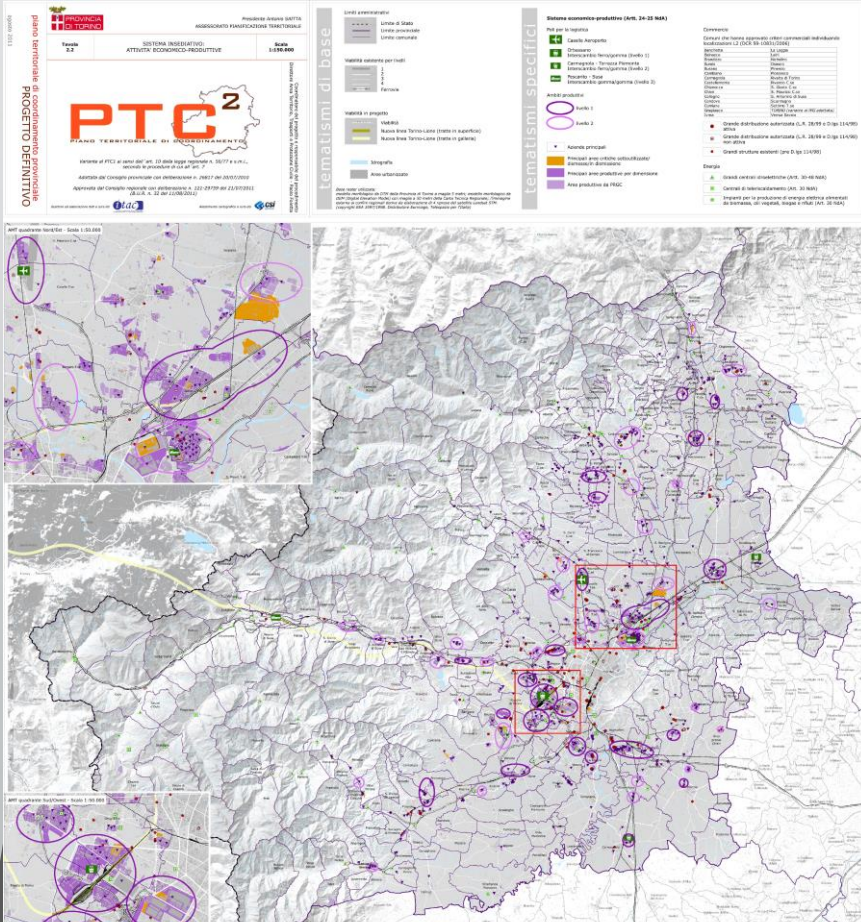
Provincial Spatial Plan

Ob: "... Defines general spatial planning addresses."



Provincial Spatial Plan (PTC2) contains addresses for the following systems:

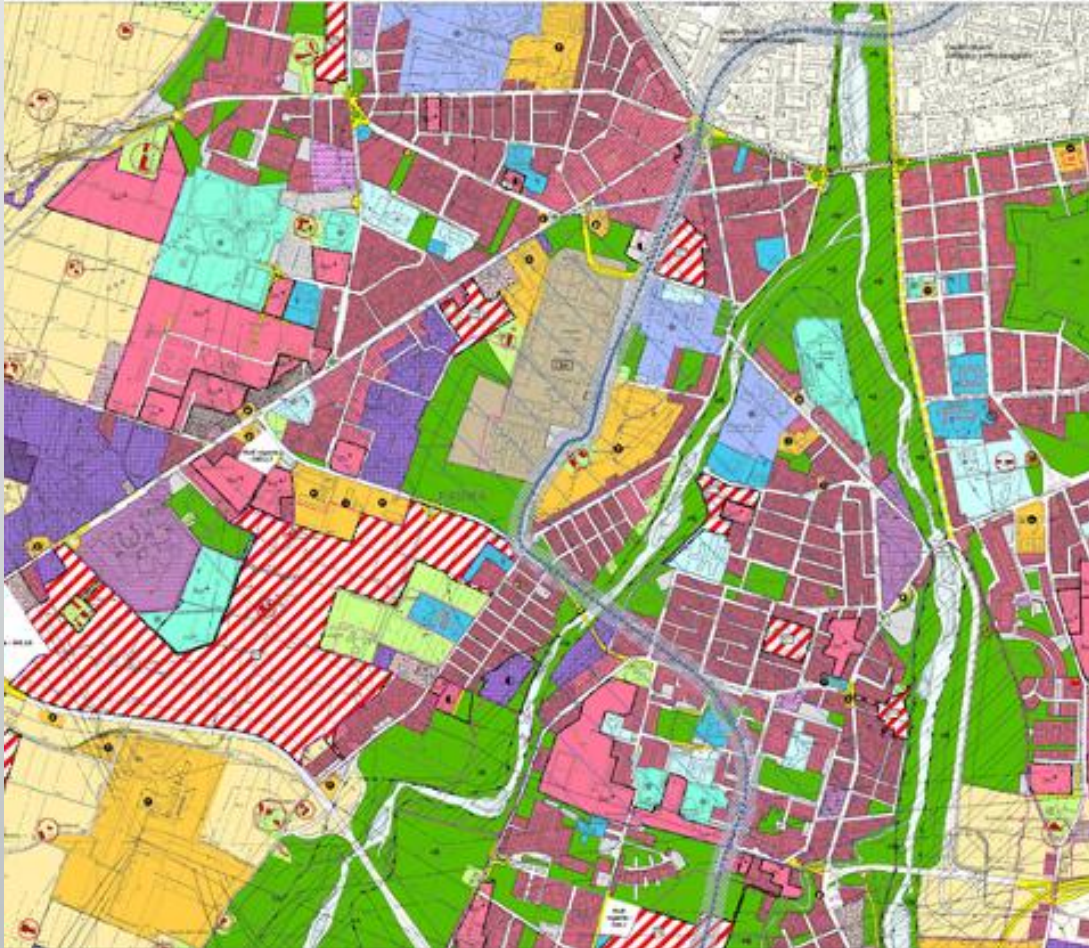
- Settlement ➡ (Limiting soil consumption)
- Economic ➡ (Enhance Forestry, tourism, productive, ..)
- Green ➡ (Ecological network, ecosystem services)
- Infrastr. ➡ (Railway, streets, slow and sustainable mobility, ..)
- Hydrogeol. ➡ (Climate change)



PTC2' Main Ob:

Limiting soil consumption for a better hydrogeological safety, primary resources availability and an economic sustainable development.

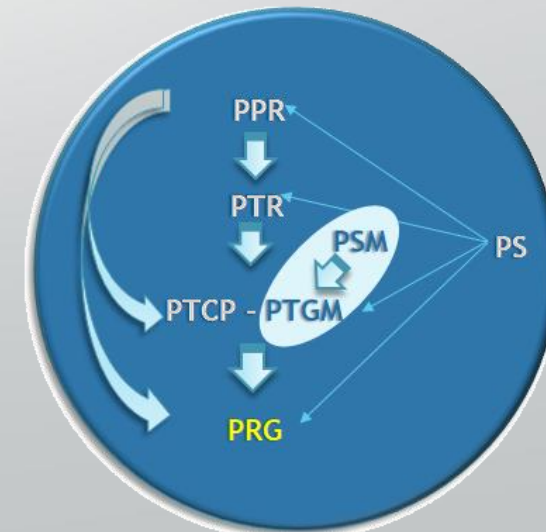
SOME EXAMPLE



Local Plan

Contents Briefly (art. 12, LR 56/77):

- rules of building transformation
- areas of residential, agricultural, productive and commercial expansion, historic centers and buildings of historical, artistic and environmental importance
- Use destination, types and method of building transformation
- Infrastructure system



MESTROPOLIATAN STRATEGIC PLAN

Approved in 2018

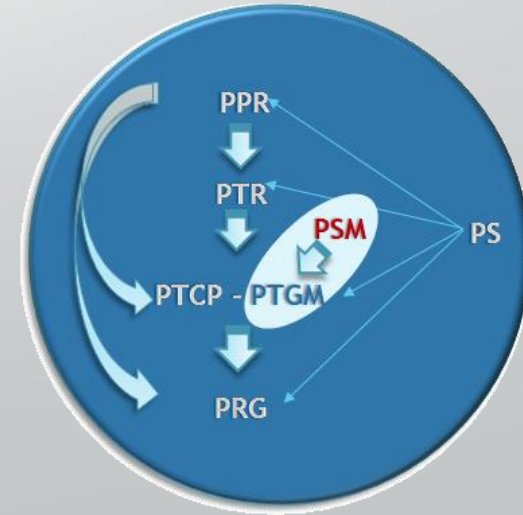


General goal is create a...
a quality cohesive territory!

PP.1. UNA CITTÀ METROPOLITANA CAPACE ATTRAVERSO UNA NUOVA GOVERNANCE INTEGRATA

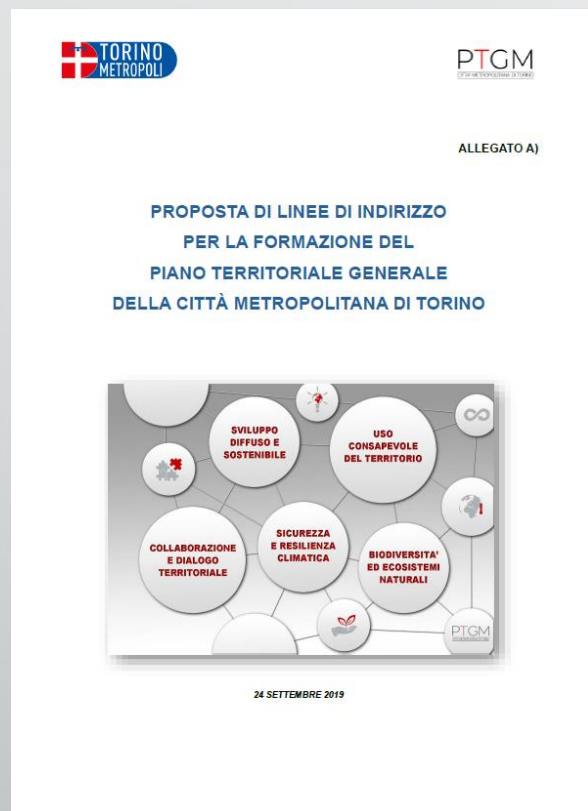
STR. 1.2 TRANSIZIONE VERSO NUOVI MODELLI DI GESTIONE DELLE INFRASTRUTTURE E DEI SERVIZI PUBBLICI DI RILEVANZA ECONOMICA

N.	AZIONI/PROGETTI PUNTUALI	P.	DESCRIZIONE SINTETICA	RISORSE NECESSARIE E/O PREVISTE (TRASFERIMENTI REGIONALI/STATALI...)			NOTE	
				STATO	2018	2019		2020
3	SISTEMA INTEGRATO DI TRASPORTO PUBBLICO LOCALE SU FERRO E SU GOMMA	1 M	La CMTO promuove la realizzazione del Sistema Integrato di TPL, anche attraverso il cofinanziamento e la partecipazione alle attività dell'Agenzia per la mobilità piemontese: 3A Opera per la ripartizione delle risorse tra i 4 ambiti ottimali per il TPL all'interno del Comitato tecnico dell'ATP 3B Coordina il Comitato tecnico di bacino di trasporto metropolitano dell'ATP per la definizione del servizio su ferro e su gomma, e per la ripartizione delle risorse economiche assegnate al bacino medesimo 3C Fornisce indicazioni trasportistiche operative per i nuovi progetti che coinvolgono il sistema delle fermate del TP su gomma e consulenza/assistenza tecnica e amministrativa in materia di trasporti e servizi pubblici non di linea (taxi e noleggio con conducente), vigila sulla regolarità dei servizi e sul rispetto delle norme contrattuali (monotraggio satellitare OTX)	Azione in corso Da mantenere Non prorogabile	2 mil. Euro (cofinanziamento ANP)			RIS 5 Ricadute B/M periodo RE: IAB
4	REVISIONE DELLA RETE STRADALE E DEI RELATIVI FABBISOGNI MANUTENTIVI	2	Nei confronti della rete stradale metropolitana è previsto un efficientamento generale nella gestione del servizio, ed individuazione delle priorità di intervento a partire da: 4A Classificazione della rete stradale in funzione del Nuovo Codice della Strada e dei criteri per la classificazione della rete stradale esistente 4B Trasferimento ad ANAS di una quota di strade attualmente in carico alla CMTO (Studio della rete attuale, analisi, revisione ed integrazione dei criteri di definizione di una nuova rete statale proposti dal Ministero...) 4C Piano per gli interventi manutentivi ordinari e straordinari e Piano di accretamento tecnico e di indagini sulle infrastrutture viarie (pavimentazioni, opere d'arte, ...). 4D Individuazione coordinata della priorità di interventi in funzione dei parametri incidentali, fornendo ai decisori elementi analitici di costi e benefici derivanti dalla progettazione di interventi sulle infrastrutture. 4E Riorganizzazione delle strutture operative (Cfr. Az. 1) conformemente alla suddivisione territoriale, per garantire un rapporto più diretto con il territorio stesso.	Da avviare Prorogabile (Necessità confronto con ANAS)	250.000,00* E (stud per Piano interventi manutentivi)			RIS 5 Ricadute B/M periodo RE: HE07, HGA, HES, HE2, HES1, HES2
3	MONITORAGGIO DELL'EVOLUZIONE DEI FENOMENI INCIDENTALI E ANALISI DEI FATTORI DI RISCHIO PER LE CATEGORIE DI UTENTI STRADALI	1 M	La CMTO attua il Piano Nazionale della Sicurezza Stradale - PASS ORIZZONTE 2020: 3A Monitora l'evoluzione dei fenomeni incidentali, sia in termini di andamento, sia per le categorie più a rischio 3B Analizza i fattori di rischio per le categorie di utenti stradali 3C Mette in atto azioni di contrasto ai fenomeni incidentali connesse alle esigenze rilevate nelle 11 Zone omogenee, differenti per infrastruttura, utenza, ambiente	Azione in corso Da mantenere Non prorogabile	Non necessari			RIS necessita 3 unità Ricadute B/M periodo RE: HES, HGA

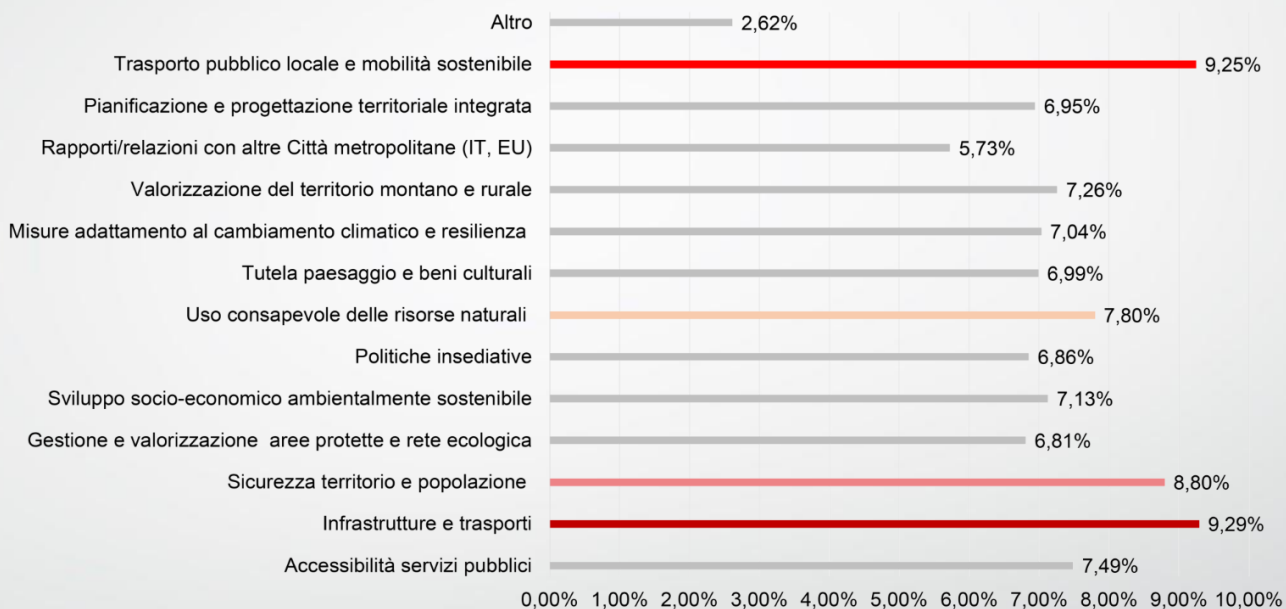


METROPOLITAN SPATIAL PLAN

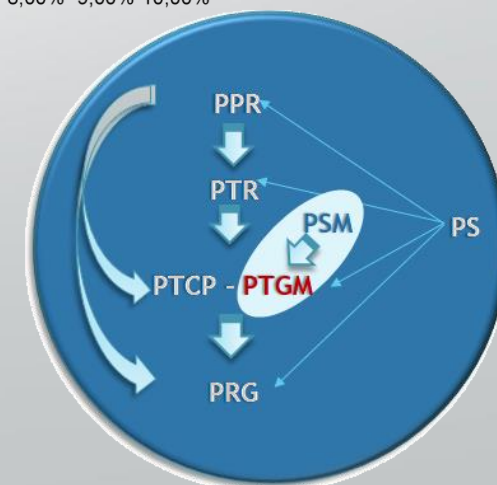
...ongoing process



Città Metropolitana di Torino



1. widespread and sustainable development
2. conscious use of the territory
3. safety and climate resilience
4. biodiversity and natural ecosystems
5. collaboration and territorial dialogue



ORGANIZATION OF METROPOLITAN CITY OF TURIN

After the Institutional reform

Governing bodies are:

Metropolitan Mayor



Coincide with Mayor of city Turin

Metropolitan Council

Policy/administrative address



Metropolitan Mayor + 18 councillors elected from among local councillors or local mayors

Metropolitan Conference

Advisory function

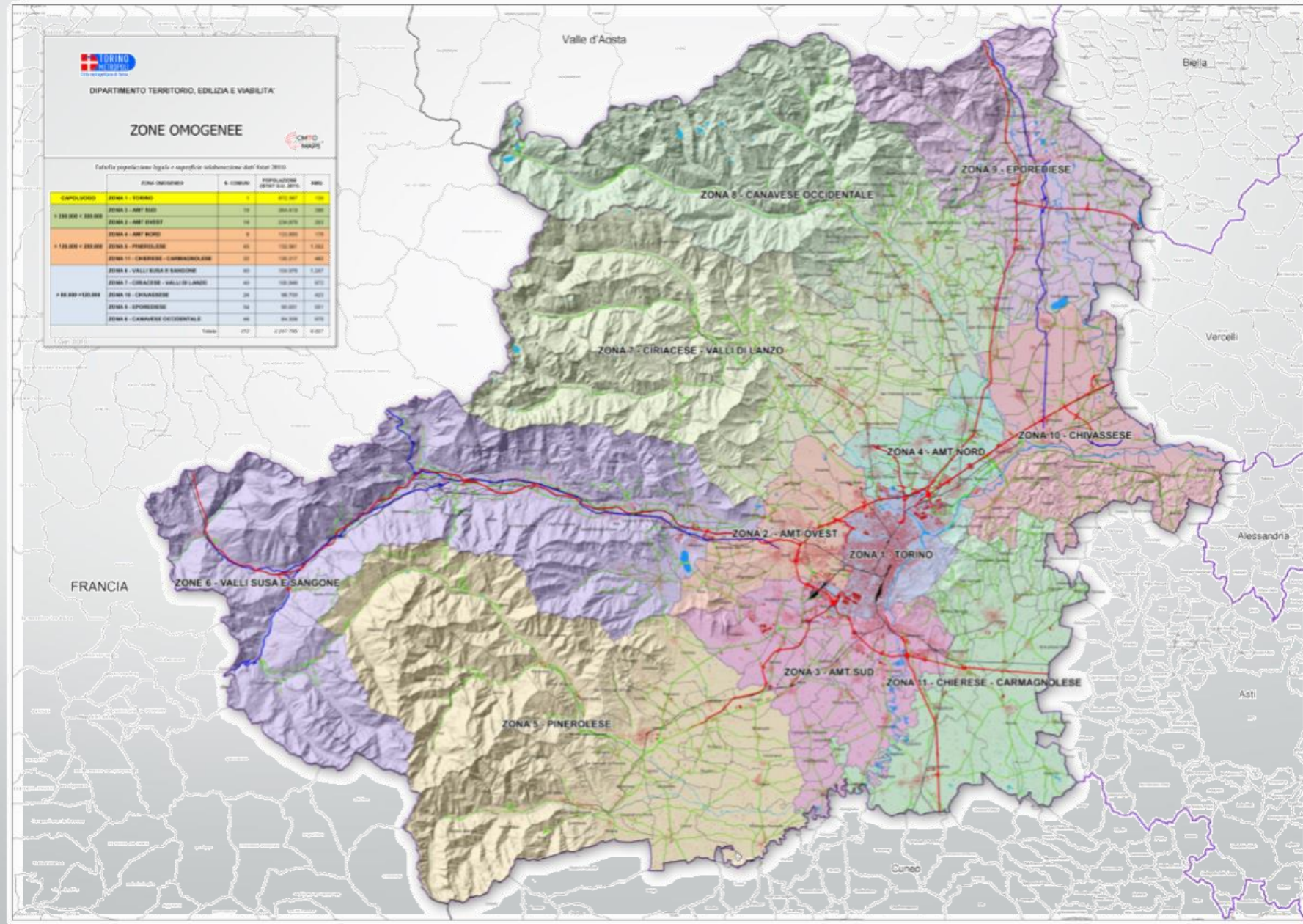


312 Mayors

(Vote the adoption of Spatial Plan and Strategic Plan)

**Indirect
election
system**

METROPOLITAN CITY OF TURIN ORGANIZATION



Homogeneous
Zones

CONTACT



Dipartimento Territorio, Edilizia e Viabilità
Unità di Progetto | Pianificazione territoriale generale



stefania.grasso@cittametropolitana.torino.it



+39 011 861 60 26

